



# PARP-1 Monoclonal Antibody

<b>Catalog No</b>	BYab-00081
<b>Isotype</b>	IgG
<b>Reactivity</b>	Human
<b>Applications</b>	WB;FCM;ELISA
<b>Gene Name</b>	PARP1
<b>Protein Name</b>	Poly [ADP-ribose] polymerase 1
<b>Immunogen</b>	Synthetic peptide of human PARP-1, conjugated to KLH.
<b>Specificity</b>	PARP-1 Monoclonal Antibody detects endogenous levels of PARP-1 protein.
<b>Formulation</b>	Ascitic fluid containing 0.03% sodium azide,0.5% BSA, 50%glycerol.
<b>Source</b>	Monoclonal, Mouse
<b>Purification</b>	Affinity purification
<b>Dilution</b>	Western Blot: 1/500 - 1/2000. Flow cytometry: 1/200 - 1/400. ELISA: 1/10000. Not yet tested in other applications.
<b>Concentration</b>	1 mg/ml
<b>Purity</b>	≥90%
<b>Storage Stability</b>	-20°C/1 year
<b>Synonyms</b>	PARP1; ADPRT; PPOL; Poly [ADP-ribose] polymerase 1; PARP-1; ADP-ribosyltransferase diphtheria toxin-like 1; ARTD1; NAD(+) ADP-ribosyltransferase 1; ADPRT 1; Poly[ADP-ribose] synthase 1
<b>Observed Band</b>	
<b>Cell Pathway</b>	Nucleus . Nucleus, nucleolus . Chromosome . Localizes to sites of DNA damage. .
<b>Tissue Specificity</b>	Brain,Colon carcinoma,Fibroblast,Lung,Ovarian carcinoma,Skin,
<b>Function</b>	catalytic activity:NAD(+) + (ADP-D-ribose)(n)-acceptor = nicotinamide + (ADP-D-ribose)(n+1)-acceptor.,function:Involved in the base excision repair (BER) pathway, by catalyzing the poly(ADP-ribose)ation of a limited number of acceptor proteins involved in chromatin architecture and in DNA metabolism. This modification follows DNA damages and appears as an obligatory step in a detection/signaling pathway leading to the reparation of DNA strand breaks.,miscellaneous:The ADP-D-ribose group of NAD(+) is transferred to an acceptor carboxyl group on a histone or the enzyme itself, and further ADP-ribose groups are transferred to the 2'-position of the terminal adenosine moiety, building up a polymer with an average chain length of 20-30 units.,PTM:Phosphorylated

Nanjing BYabscience technology Co.,Ltd



by PRKDC. Phosphorylated upon DNA damage, probably by ATM or ATR.,PTM:Poly-ADP-ribosylated by PARP2.,similarity:Contains 1 BRCT

**Background**

This gene encodes a chromatin-associated enzyme, poly(ADP-ribosyl)transferase, which modifies various nuclear proteins by poly(ADP-ribosyl)ation. The modification is dependent on DNA and is involved in the regulation of various important cellular processes such as differentiation, proliferation, and tumor transformation and also in the regulation of the molecular events involved in the recovery of cell from DNA damage. In addition, this enzyme may be the site of mutation in Fanconi anemia, and may participate in the pathophysiology of type I diabetes. [provided by RefSeq, Jul 2008],

**matters needing attention**

Avoid repeated freezing and thawing!

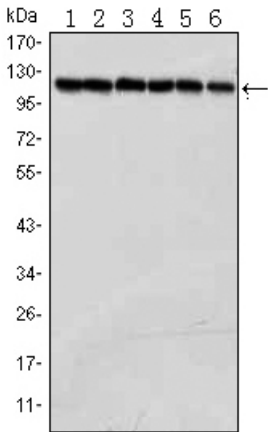
**Usage suggestions**

This product can be used in immunological reaction related experiments. For more information, please consult technical personnel.

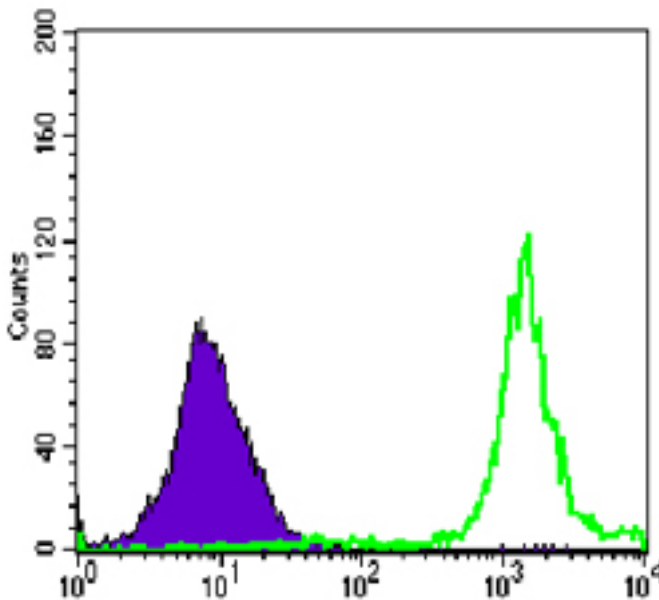
Nanjing BYabscience technology Co.,Ltd



## Products Images



Western Blot analysis using PARP-1 Monoclonal Antibody against Jurkat (1), K562 (2), HeLa (3), Raji (4), THP-1 (5) and SW620 (6) cell lysate.



Flow cytometric analysis of Jurkat cells using PARP-1 Monoclonal Antibody (green) and negative control (purple).