



# GFAP Rabbit pAb

<b>Catalog No</b>	BYab-17745
<b>Isotype</b>	IgG
<b>Reactivity</b>	Human,Mouse,Rat
<b>Applications</b>	WB,IHC-P,ICC/IF,IP
<b>Gene Name</b>	GFAP
<b>Alternative Names</b>	GFAP; FLJ45472; cb345; ALXDRD
<b>Research Field</b>	Neuroscience
<b>Product Categories</b>	Primary antibody
<b>Host</b>	Rabbit
<b>Molecular Weight</b>	Calculated MW: 50 kDa; Observed MW: 50 kDa
<b>Clonality</b>	Polyclonal Antibody
<b>Clonality No.</b>	-
<b>Dilution</b>	WB: 1/500-1/1000 IHC: 1/50-1/100 IF: 1/50-1/200 IP: 1/20
<b>Immunogen</b>	A synthesized peptide derived from human GFAP
<b>Purification</b>	Affinity Chromatography
<b>Conjugation</b>	Unconjugated
<b>Modification</b>	Unmodified
<b>Form</b>	Liquid
<b>Buffer System</b>	Rabbit IgG in phosphate buffered saline , pH 7.4, 150mM NaCl, 0.02% sodium azide and 50% glycerol.
<b>Concentration</b>	1 mg/ml
<b>Purity</b>	≥90%
<b>Storage</b>	Store at 4°C short term. Aliquot and store at -20°C long term. Avoid freeze/thaw cycles.
<b>Background</b>	GFAP is commonly used as a marker for intracranial and intraspinal tumors arising from astrocytes. In addition, GFAP intermediate filaments are also present in nonmyelin-forming Schwann cells in the peripheral nervous system

Nanjing BYabscience technology Co.,Ltd



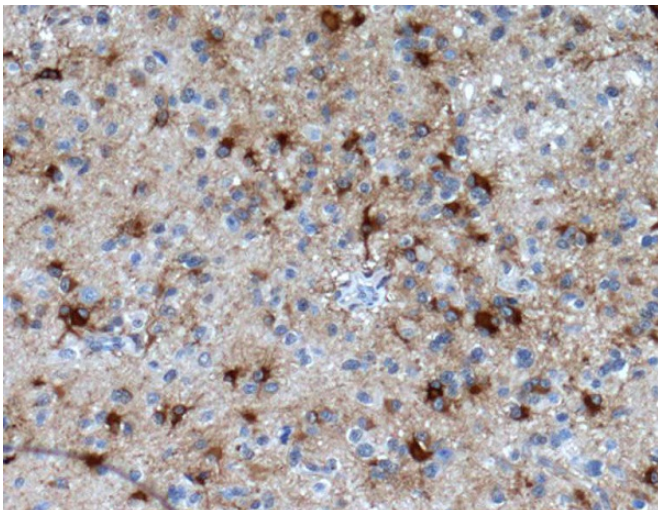
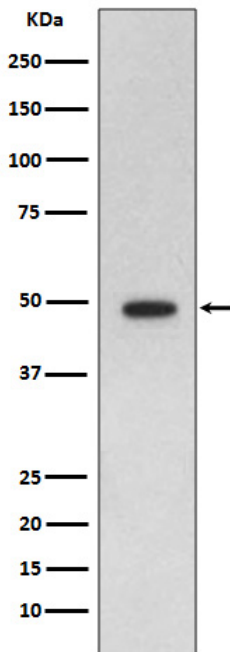
**matters needing attention**

Avoid repeated freezing and thawing!

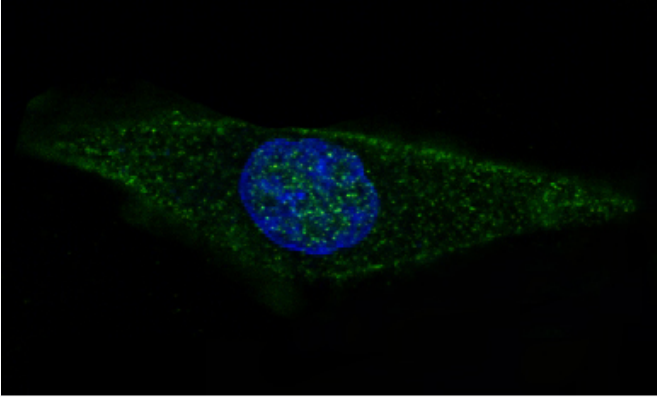
**Usage suggestions**

This product can be used in immunological reaction related experiments. For more information, please consult technical personnel.

**Products Images**



**Nanjing BYabscience technology Co.,Ltd**



Nanjing BYabscience technology Co.,Ltd

网址: [www.njbybio.com](http://www.njbybio.com)

官方热线: 025-5229-8998

监督电话: 15950492658