



BDKRB2 Rabbit mAb

Catalog No	BYab-17733
Isotype	IgG
Reactivity	Human, Mouse
Applications	WB, IP
Gene Name	BDKRB2
Alternative Names	B2BKR; B2BRA; B2R; BDKRB2; BK2 receptor; BK2R; BKR2; BR B2; BRB2; Kinin B2
Research Field	Cardiovascular
Product Categories	Primary antibody
Host	Rabbit
Molecular Weight	Calculated MW: 44 kDa; Observed MW: 78 kDa
Clonality	Monoclonal Antibody
Clonality No.	R08-8W3
Dilution	WB: 1/500-1/1000 IP: 1/50
Immunogen	A synthesized peptide derived from human BDKRB2
Purification	Affinity Chromatography
Conjugation	Unconjugated
Modification	Unmodified
Form	Liquid
Buffer System	Rabbit IgG in phosphate buffered saline , pH 7.4, 150mM NaCl, 0.02% sodium azide and 50% glycerol.
Concentration	1 mg/ml
Purity	≥90%
Storage	Store at 4°C short term. Aliquot and store at -20°C long term. Avoid freeze/thaw cycles.
Background	Receptor for bradykinin. It is associated with G proteins that activate a phosphatidylinositol-calcium second messenger system.

Nanjing BYabscience technology Co.,Ltd



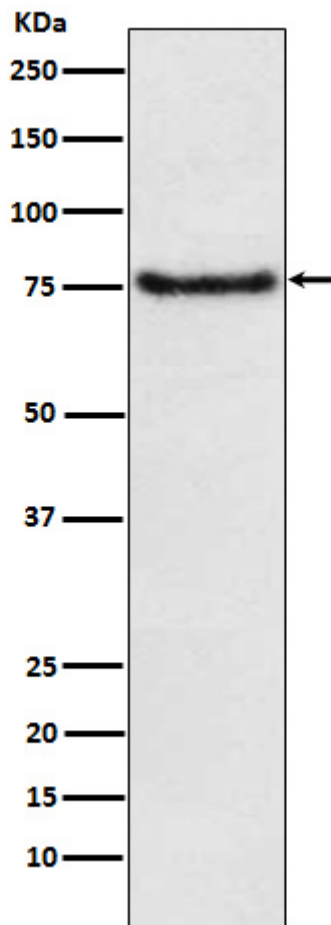
matters needing attention

Avoid repeated freezing and thawing!

Usage suggestions

This product can be used in immunological reaction related experiments. For more information, please consult technical personnel.

Products Images



Nanjing BYabscience technology Co.,Ltd