



beta Catenin Rabbit mAb

Catalog No	BYab-17726
Isotype	IgG
Gene Name	CTNNB1
Alternative Names	CTNNB1; CTNNB; OK/SW-cl.35; Catenin beta-1; Beta-catenin
SwissProt ID	P35222
Gene ID	1499
Research Field	Signal Transduction
Product Categories	Primary antibody
Host	Rabbit
Reactivity	Human,Mouse,Rat,Hamster
Application	WB,IHC-P,IP
Dilution Ratio	WB: 1/500-1/1000 IHC: 1/50-1/100 IP: 1/20
Molecular Weight	Calculated MW: 85 kDa; Observed MW: 85 kDa
Clonality	Monoclonal Antibody
Clonality No.	R06-1E2
Immunogen	A synthetic peptide of human beta Catenin
Purification	Affinity Purified
Conjugation	Unconjugated
Modification	Unmodified
Form	Liquid
Buffer System	50mM Tris-Glycine(pH 7.4), 0.15M NaCl, 40% Glycerol, 0.01% Sodium azide and 0.05% BSA
Storage	Store at 4°C short term. Aliquot and store at -20°C long term. Avoid freeze/thaw cycles.
Background	Beta-catenin is an adherens junction protein. Adherens junctions (AJs; also called the zonula adherens) are critical for the establishment and maintenance of epithelial layers, such as those lining organ surfaces. AJs mediate adhesion between cells, communicate a signal that neighboring cells are present, and anchor the actin cytoskeleton. In serving these roles, AJs regulate normal cell growth and behavior.

Nanjing BYabscience technology Co.,Ltd



matters needing attention

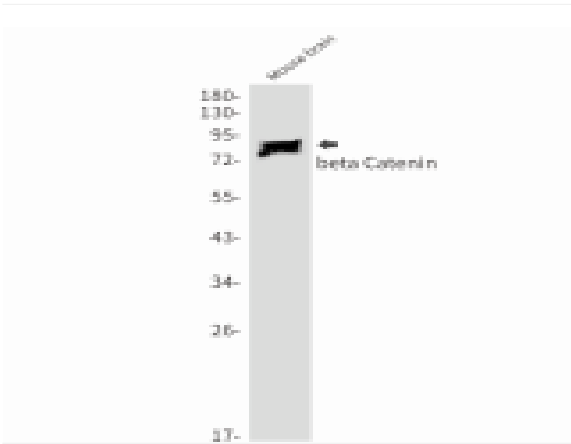
Avoid repeated freezing and thawing!

Usage suggestions

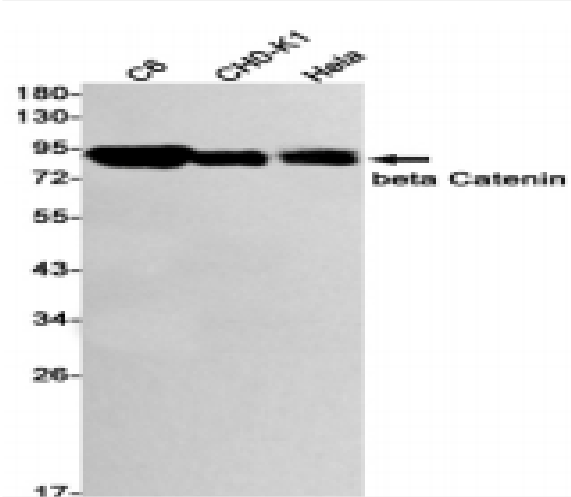
This product can be used in immunological reaction related experiments. For more information, please consult technical personnel.



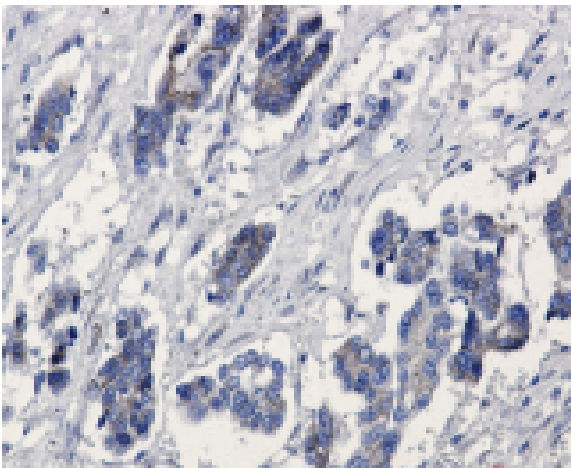
Products Images



Western blot analysis of beta Catenin in mouse brain lysates using beta Catenin antibody.



Western blot analysis of beta Catenin in C6, CHO-K1, HeLa lysates using beta Catenin antibody.



Immunohistochemistry analysis of paraffin-embedded Human Cholangiocarcinoma using beta Catenin antibody. High-pressure and temperature Sodium Citrate pH 6.0 was used for antigen retrieval.