



# Fetal Hemoglobin Rabbit mAb

<b>Catalog No</b>	BYab-17698
<b>Isotype</b>	IgG
<b>Reactivity</b>	Human
<b>Applications</b>	WB
<b>Research Field</b>	Cardiovascular
<b>Product Categories</b>	Primary antibody
<b>Host</b>	Rabbit
<b>Dilution Ratio</b>	WB: 1/500-1/1000
<b>Molecular Weight</b>	Calculated MW: 16 kDa; Observed MW: 12 kDa
<b>Clonality</b>	Monoclonal Antibody
<b>Clonality No.</b>	R04-4A8
<b>Immunogen</b>	A synthesized peptide derived from human HBG1/2
<b>Concentration</b>	1 mg/ml
<b>Purity</b>	≥90%
<b>Storage Stability</b>	-20°C/1 year
<b>Synonyms</b>	Gamma 1 globin; Gamma 2 globin; Gamma A hemoglobin; Gamma globin; Hb F Agamma; Hb F Ggamma; HBG1; HBG2; HBGA; HBGR
<b>Purification</b>	Affinity Chromatography
<b>Conjugation</b>	Unconjugated
<b>Form</b>	Liquid
<b>Buffer System</b>	Rabbit IgG in phosphate buffered saline , pH 7.4, 150mM NaCl, 0.02% sodium azide and 50% glycerol.
<b>Storage</b>	Store at 4°C short term. Aliquot and store at -20°C long term. Avoid freeze/thaw cycles.

Nanjing BYabscience technology Co.,Ltd



---

**Background**

The gamma globin genes (HBG1 and HBG2) are normally expressed in the fetal liver, spleen and bone marrow. Two gamma chains together with two alpha chains constitute fetal hemoglobin (HbF) which is normally replaced by adult hemoglobin (HbA) at birth.

---

**matters needing attention**

Avoid repeated freezing and thawing!

---

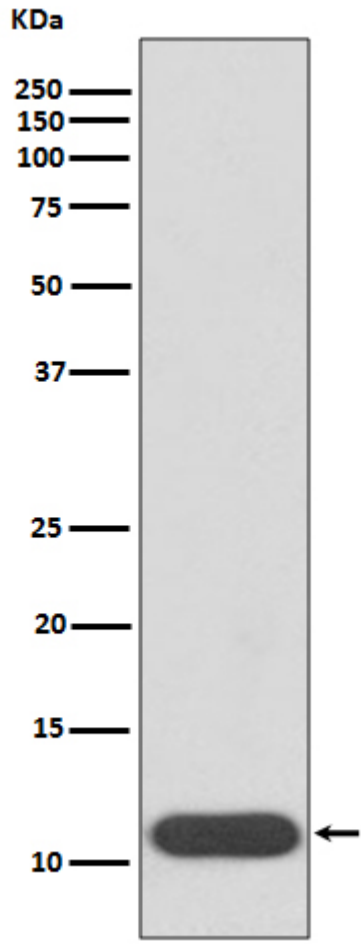
**Usage suggestions**

This product can be used in immunological reaction related experiments. For more information, please consult technical personnel.

---



## Products Images



Nanjing BYabscience technology Co.,Ltd