



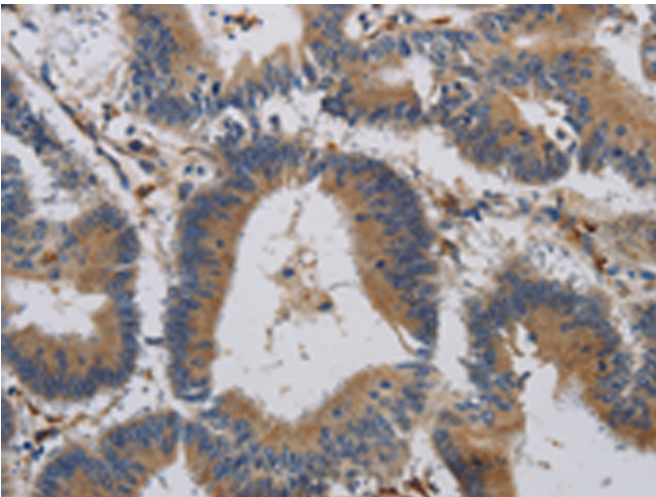
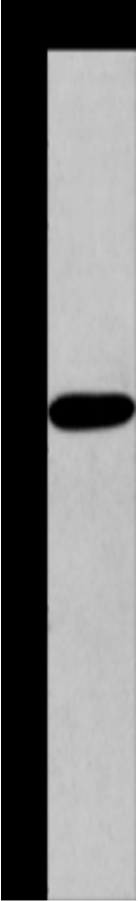
# KCTD12 rabbit pAb

货号	BYab-17696
亚型	IgG
反应种属	Human;Mouse
应用	WB
靶点:	KCTD12
基因名称:	KCTD12 C13orf2 KIAA1778 PFET1
蛋白名称:	BTB/POZ domain-containing protein KCTD12 (Pfetin) (Predominantly fetal expressed T1 domain)
免疫原:	Synthesized peptide derived from human KCTD12
特异性:	This antibody detects endogenous levels of KCTD12 at Human, Mouse
组成:	Liquid in PBS containing 50% glycerol, and 0.305% sodium azide.
来源:	Polyclonal, Rabbit,IgG
稀释:	WB 1:500-2000
纯化工艺:	The antibody was affinity-purified from rabbit antiserum by affinity-chromatography using epitope-specific immunogen.
浓度	1 mg/ml
纯度	≥90%
储存:	-15°C to -25°C/1 year(Do not lower than -25°C)
分子量:	36kD
功能:	Auxiliary subunit of GABA-B receptors that determine the pharmacology and kinetics of the receptor response. Increases agonist potency and markedly alter the G-protein signaling of the receptors by accelerating onset and promoting desensitization (By similarity).
细胞定位:	Cell junction, synapse, presynaptic cell membrane. Cell junction, synapse, postsynaptic cell membrane .
组织表达:	Present in a variety of fetal organs, with highest expression levels in the cochlea and brain and, in stark contrast, is detected only at extremely low levels in adult organs, such as brain and lung.
有关注意事项	Avoid repeated freezing and thawing!
使用建议	This product can be used in immunological reaction related experiments. For more information, please consult technical personnel.

**Nanjing BYabscience technology Co.,Ltd**



## Products Images



Nanjing BYabscience technology Co.,Ltd

网址: [www.njbybio.com](http://www.njbybio.com)

官方热线: 025-5229-8998

监督电话: 15950492658



**Nanjing BYabscience technology Co.,Ltd**

网址: [www.njbybio.com](http://www.njbybio.com)

官方热线: 025-5229-8998

监督电话: 15950492658