



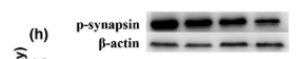
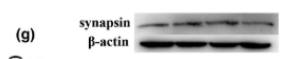
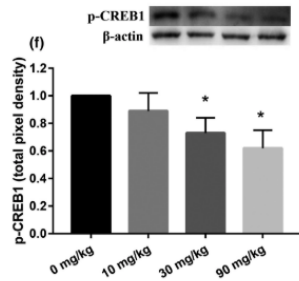
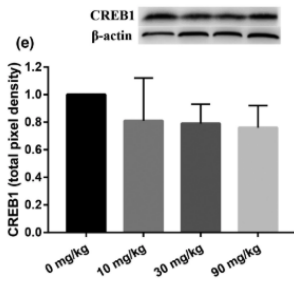
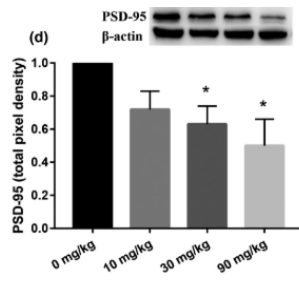
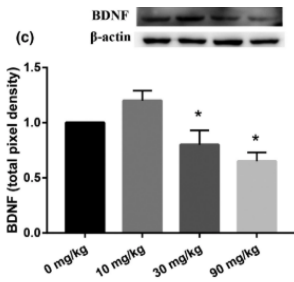
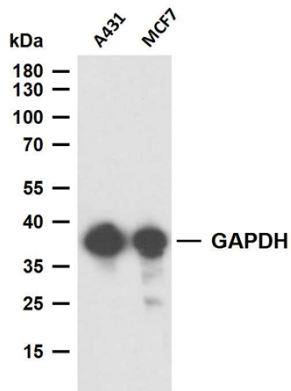
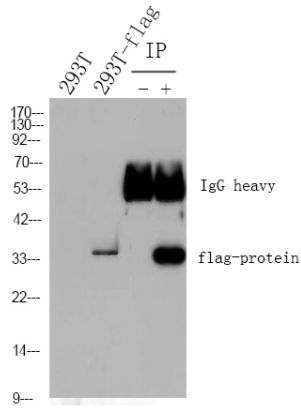
# LSM5 rabbit pAb

<b>Catalog No</b>	BYab-17690
<b>Isotype</b>	IgG
<b>Reactivity</b>	Human;Mouse
<b>Applications</b>	WB
<b>Gene Name</b>	LSM5
<b>Protein Name</b>	U6 snRNA-associated Sm-like protein LSm5
<b>Immunogen</b>	Synthesized peptide derived from human LSM5
<b>Specificity</b>	This antibody detects endogenous levels of LSM5 at Human, Mouse
<b>Formulation</b>	Liquid in PBS containing 50% glycerol, and 0.2089% sodium azide.
<b>Source</b>	Polyclonal, Rabbit,IgG
<b>Purification</b>	The antibody was affinity-purified from rabbit antiserum by affinity-chromatography using epitope-specific immunogen.
<b>Dilution</b>	WB 1:500-2000
<b>Concentration</b>	1 mg/ml
<b>Purity</b>	≥90%
<b>Storage Stability</b>	-15°C to -25°C/1 year(Do not lower than -25°C)
<b>Observed Band</b>	10kD
<b>Cellular localization</b>	Nucleus .
<b>Function</b>	Plays role in pre-mRNA splicing as component of the U4/U6-U5 tri-snRNP complex that is involved in spliceosome assembly, and as component of the precatalytic spliceosome (spliceosome B complex) . The heptameric LSM2-8 complex binds specifically to the 3'-terminal U-tract of U6 snRNA .
<b>matters needing attention</b>	Avoid repeated freezing and thawing!
<b>Usage suggestions</b>	This product can be used in immunological reaction related experiments. For more information, please consult technical personnel.

Nanjing BYabscience technology Co.,Ltd



## Products Images



Nanjing BYabscience technology Co.,Ltd

