



# FGFR4 (Phospho Tyr754) Rabbit pAb

<b>Catalog No</b>	BYab-17315
<b>Isotype</b>	IgG
<b>Reactivity</b>	Human, Mouse,Rat
<b>Applications</b>	IHC,WB
<b>Gene Name</b>	FGFR4 JTK2 TKF
<b>Protein Name</b>	Fibroblast growth factor receptor 4 (FGFR-4) (EC 2.7.10.1) (CD antigen CD334)
<b>Immunogen</b>	Synthesized peptide derived from human FGFR4 (Phospho Tyr754)
<b>Specificity</b>	This antibody detects endogenous levels of FGFR4 (Phospho Tyr754) Rabbit pAb at Human, Mouse,Rat
<b>Formulation</b>	Liquid in PBS containing 50% glycerol, and 0.02% sodium azide.
<b>Source</b>	Rabbit,polyclonal
<b>Purification</b>	The antibody was affinity-purified from rabbit serum by affinity-chromatography using specific immunogen.
<b>Dilution</b>	WB 1:500-2000 IHC 1:50-200
<b>Concentration</b>	1 mg/ml
<b>Purity</b>	≥90%
<b>Storage Stability</b>	-20°C/1 year
<b>Synonyms</b>	Fibroblast growth factor receptor 4 (FGFR-4) (EC 2.7.10.1) (CD antigen CD334)
<b>Observed Band</b>	90kD
<b>Cell Pathway</b>	Cell membrane; Single-pass type I membrane protein. Endosome. Endoplasmic reticulum. Internalized from the cell membrane to recycling endosomes, and from there back to the cell membrane.; [Isoform 2]: Secreted.; [Isoform 3]: Cytoplasm .
<b>Tissue Specificity</b>	Expressed in gastrointestinal epithelial cells, pancreas, and gastric and pancreatic cancer cell lines.
<b>Function</b>	catalytic activity:ATP + a [protein]-L-tyrosine = ADP + a [protein]-L-tyrosine phosphate.,function:Receptor for acidic fibroblast growth factor. Does not bind to basic fibroblast growth factor. Binds FGF19.,PTM:Glycosylated (By similarity). Phosphorylated on tyrosine residue (By similarity). Phosphorylation requires the presence of a functional (phosphorylated) FGFR1 and not necessarily by means of FGFR heterodimerization.,similarity:Belongs to the protein kinase superfamily. Tyr protein kinase family.,similarity:Belongs to the protein kinase superfamily. Tyr protein kinase family. Fibroblast growth factor receptor subfamily.,similarity:Contains 1 protein kinase domain.,similarity:Contains 3 Ig-like C2-type (immunoglobulin-like) domains.,subcellular location:Isoform 2 may

Nanjing BYabscience technology Co.,Ltd



be secreted.,subunit:Interacts with KLB.,tissue specificity:Expressed in gastrointestinal epithelial cells, pancreas,

**Background**

fibroblast growth factor receptor 4(FGFR4) Homo sapiens The protein encoded by this gene is a member of the fibroblast growth factor receptor family, where amino acid sequence is highly conserved between members and throughout evolution. FGFR family members differ from one another in their ligand affinities and tissue distribution. A full-length representative protein would consist of an extracellular region, composed of three immunoglobulin-like domains, a single hydrophobic membrane-spanning segment and a cytoplasmic tyrosine kinase domain. The extracellular portion of the protein interacts with fibroblast growth factors, setting in motion a cascade of downstream signals, ultimately influencing mitogenesis and differentiation. The genomic organization of this gene, compared to members 1-3, encompasses 18 exons rather than 19 or 20. Although alternative splicing has been observed, there is no evidence that the C-terminal half of the Igll

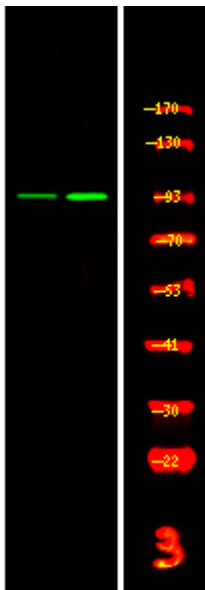
**matters needing attention**

Avoid repeated freezing and thawing!

**Usage suggestions**

This product can be used in immunological reaction related experiments. For more information, please consult technical personnel.

**Products Images**



Western Blot analysis of THP-1 cell, 2 Serum-free treated ,using primary antibody at 1:1000 dilution. Secondary antibody(catalog#:RS23920) was diluted at 1:10000