



EPHA1 (Phospho Tyr781) Rabbit pAb

Catalog No	BYab-17310
Isotype	IgG
Reactivity	Human, Mouse
Applications	IHC, WB
Gene Name	EPHA1 EPH EPHT EPHT1
Protein Name	Ephrin type-A receptor 1 (hEpha1) (EC 2.7.10.1) (EPH tyrosine kinase) (EPH tyrosine kinase 1) (Erythropoietin-producing hepatoma receptor) (Tyrosine-protein kinase receptor EPH)
Immunogen	Synthesized peptide derived from human EPHA1 (Phospho Tyr781)
Specificity	This antibody detects endogenous levels of EPHA1 (Phospho Tyr781) Rabbit pAb at Human, Mouse
Formulation	Liquid in PBS containing 50% glycerol, and 0.02% sodium azide.
Source	Rabbit, polyclonal
Purification	The antibody was affinity-purified from rabbit serum by affinity-chromatography using specific immunogen.
Dilution	WB 1:500-2000 IHC 1:50-200
Concentration	1 mg/ml
Purity	≥90%
Storage Stability	-20°C/1 year
Synonyms	Ephrin type-A receptor 1 (hEpha1) (EC 2.7.10.1) (EPH tyrosine kinase) (EPH tyrosine kinase 1) (Erythropoietin-producing hepatoma receptor) (Tyrosine-protein kinase receptor EPH)
Observed Band	69kD
Cell Pathway	Cell membrane ; Single-pass type I membrane protein .
Tissue Specificity	Overexpressed in several carcinomas.
Function	catalytic activity:ATP + a [protein]-L-tyrosine = ADP + a [protein]-L-tyrosine phosphate.,function:Receptor for members of the ephrin-A family. Binds with a low affinity to ephrin-A1.,similarity:Belongs to the protein kinase superfamily. Tyr protein kinase family.,similarity:Belongs to the protein kinase superfamily. Tyr protein kinase family. Ephrin receptor subfamily.,similarity:Contains 1 protein kinase domain.,similarity:Contains 1 SAM (sterile alpha motif) domain.,similarity:Contains 2 fibronectin type-III domains.,tissue specificity:Overexpressed in several carcinomas.,

Nanjing BYabscience technology Co.,Ltd



Background

EPH receptor A1(EPHA1) Homo sapiens This gene belongs to the ephrin receptor subfamily of the protein-tyrosine kinase family. EPH and EPH-related receptors have been implicated in mediating developmental events, particularly in the nervous system. Receptors in the EPH subfamily typically have a single kinase domain and an extracellular region containing a Cys-rich domain and 2 fibronectin type III repeats. The ephrin receptors are divided into 2 groups based on the similarity of their extracellular domain sequences and their affinities for binding ephrin-A and ephrin-B ligands. This gene is expressed in some human cancer cell lines and has been implicated in carcinogenesis. [provided by RefSeq, Jul 2008],

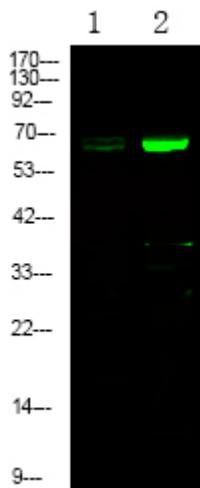
matters needing attention

Avoid repeated freezing and thawing!

Usage suggestions

This product can be used in immunological reaction related experiments. For more information, please consult technical personnel.

Products Images



Western Blot analysis of 1 Jurkat cell 2 Serum-free treated ,using primary antibody at 1:1000 dilution. Secondary antibody(catalog#:RS23920) was diluted at 1:10000