



NEUA rabbit pAb

Catalog No	BYab-17265
Isotype	IgG
Reactivity	Human, Mouse,Rat
Applications	IHC,WB
Gene Name	CMAS
Protein Name	N-acylneuraminate cytidyltransferase (EC 2.7.7.43) (CMP-N-acetylneuraminic acid synthase) (CMP-NeuNAc synthase)
Immunogen	Synthesized peptide derived from human C-ternal NEUA
Specificity	This antibody detects endogenous levels of NEUA at Human, Mouse,Rat
Formulation	Liquid in PBS containing 50% glycerol, and 0.02% sodium azide.
Source	Rabbit,polyclonal
Purification	The antibody was affinity-purified from rabbit serum by affinity-chromatography using specific immunogen.
Dilution	WB 1:500-2000 IHC 1:50-200
Concentration	1 mg/ml
Purity	≥90%
Storage Stability	-20°C/1 year
Synonyms	N-acylneuraminate cytidyltransferase (EC 2.7.7.43) (CMP-N-acetylneuraminic acid synthase) (CMP-NeuNAc synthase)
Observed Band	
Cell Pathway	Nucleus .
Tissue Specificity	Ubiquitously expressed. Expressed in pancreas, kidney, liver, skeletal muscle, lung, placenta, brain, heart, colon, PBL, small intestine, ovary, testis, prostate, thymus and spleen.
Function	Catalyzes the activation of N-acetylneuraminic acid (NeuNAc) to cytidine 5'-monophosphate N-acetylneuraminic acid (CMP-NeuNAc), a substrate required for the addition of sialic acid. Has some activity toward NeuNAc, N-glycolylneuraminic acid (Neu5Gc) or 2-keto-3-deoxy-D-glycero-D-galacto-nononic acid (KDN).
Background	

Nanjing BYabscience technology Co.,Ltd



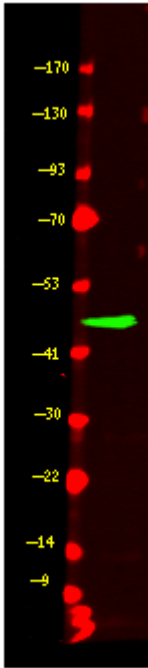
matters needing attention

Avoid repeated freezing and thawing!

Usage suggestions

This product can be used in immunological reaction related experiments. For more information, please consult technical personnel.

Products Images



Western Blot analysis of HeLa cell lysis, using primary antibody at 1:1000 dilution. Secondary antibody(catalog#:RS23920) was diluted at 1:10000