



# MARCKS (phospho Ser159) Polyclonal Antibody

<b>Catalog No</b>	BYab-17184
<b>Isotype</b>	IgG
<b>Reactivity</b>	Human;Mouse;Rat
<b>Applications</b>	WB;ELISA
<b>Gene Name</b>	MARCKS
<b>Protein Name</b>	Myristoylated alanine-rich C-kinase substrate
<b>Immunogen</b>	The antiserum was produced against synthesized peptide derived from human MARCKS around the phosphorylation site of Ser158. AA range:126-175
<b>Specificity</b>	Phospho-MARCKS (S158) Polyclonal Antibody detects endogenous levels of MARCKS protein only when phosphorylated at S158.
<b>Formulation</b>	Liquid in PBS containing 50% glycerol, 0.5% BSA and 0.02% sodium azide.
<b>Source</b>	Polyclonal, Rabbit,IgG
<b>Purification</b>	The antibody was affinity-purified from rabbit antiserum by affinity-chromatography using epitope-specific immunogen.
<b>Dilution</b>	Western Blot: 1/500 - 1/2000. ELISA: 1/20000. Not yet tested in other applications.
<b>Concentration</b>	1 mg/ml
<b>Purity</b>	≥90%
<b>Storage Stability</b>	-20°C/1 year
<b>Synonyms</b>	MARCKS; MACS; PRKCSL; Myristoylated alanine-rich C-kinase substrate; MARCKS; Protein kinase C substrate; 80 kDa protein, light chain; 80K-L protein; PKCSL
<b>Observed Band</b>	35kD
<b>Cell Pathway</b>	Cytoplasm, cytoskeleton . Membrane ; Lipid-anchor .
<b>Tissue Specificity</b>	Blood,Brain,Epithelium,Muscle,Skin,
<b>Function</b>	function:MARCKS is the most prominent cellular substrate for protein kinase C. This protein binds calmodulin, actin, and synapsin. MARCKS is a filamentous (F) actin cross-linking protein.,PTM:Phosphorylation by PKC displaces MARCKS from the membrane. It also inhibits the F-actin cross-linking activity.,similarity:Belongs to the MARCKS family.,
<b>Background</b>	The protein encoded by this gene is a substrate for protein kinase C. It is localized to the plasma membrane and is an actin filament crosslinking protein. Phosphorylation by protein kinase C or binding to calcium-calmodulin inhibits its

**Nanjing BYabscience technology Co.,Ltd**



association with actin and with the plasma membrane, leading to its presence in the cytoplasm. The protein is thought to be involved in cell motility, phagocytosis, membrane trafficking and mitogenesis. [provided by RefSeq, Jul 2008],

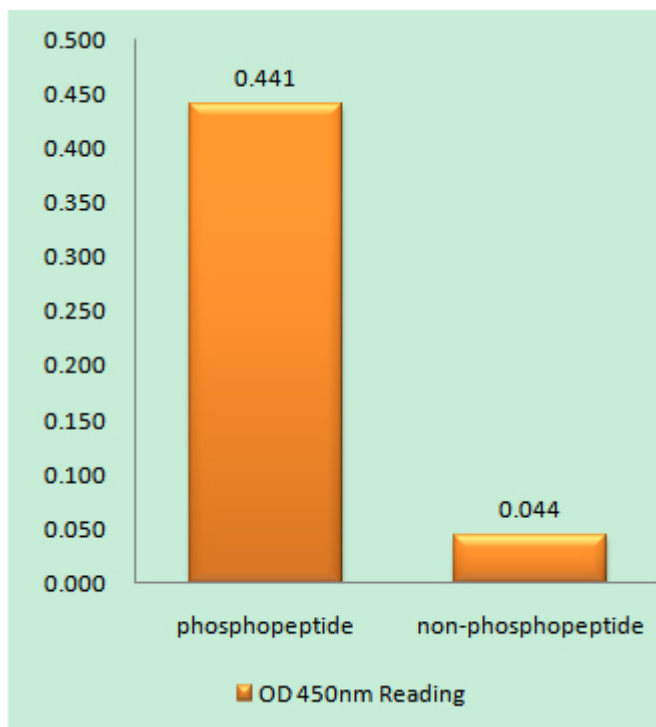
**matters needing attention**

Avoid repeated freezing and thawing!

**Usage suggestions**

This product can be used in immunological reaction related experiments. For more information, please consult technical personnel.

## Products Images



Enzyme-Linked Immunosorbent Assay (Phospho-ELISA) for Immunogen Phosphopeptide (Phospho-left) and Non-Phosphopeptide (Phospho-right), using MARCKS (Phospho-Ser158) Antibody



Western blot analysis of lysates from K562 cells treated with EGF 200ng/ml 30', using MARCKS (Phospho-Ser158) Antibody. The lane on the right is blocked with the phospho peptide.

# MARCKS (pSer158)

nce technology Co.,Ltd

025-5229-8998

监督电话: 15950492658



---

---

---

**Nanjing BYabscience technology Co.,Ltd**

网址: [www.njbybio.com](http://www.njbybio.com)

官方热线: 025-5229-8998

监督电话: 15950492658