



RBBP8 (Phospho Ser664) Rabbit pAb

Catalog No	BYab-17156
Isotype	IgG
Reactivity	Human, Mouse,Rat
Applications	IHC,WB
Gene Name	RBBP8 CTIP
Protein Name	DNA endonuclease RBBP8 (EC 3.1.-.-) (CtBP-interacting protein) (CtIP) (Retinoblastoma-binding protein 8) (RBBP-8) (Retinoblastoma-interacting protein and myosin-like) (RIM) (Sporulation in the absence
Immunogen	Synthesized peptide derived from human RBBP8 (Phospho Ser664)
Specificity	This antibody detects endogenous levels of RBBP8 (Phospho Ser664) Rabbit pAb at Human, Mouse,Rat
Formulation	Liquid in PBS containing 50% glycerol, and 0.02% sodium azide.
Source	Rabbit,polyclonal
Purification	The antibody was affinity-purified from rabbit serum by affinity-chromatography using specific immunogen.
Dilution	WB 1:500-2000 IHC 1:50-200
Concentration	1 mg/ml
Purity	≥90%
Storage Stability	-20°C/1 year
Synonyms	DNA endonuclease RBBP8 (EC 3.1.-.-) (CtBP-interacting protein) (CtIP) (Retinoblastoma-binding protein 8) (RBBP-8) (Retinoblastoma-interacting protein and myosin-like) (RIM) (Sporulation in the absence of SPO11 protein 2 homolog) (SAE2)
Observed Band	100kD
Cell Pathway	Nucleus . Chromosome . Associates with sites of DNA damage in S/G2 phase (PubMed:10764811, PubMed:25349192). Ubiquitinated RBBP8 binds to chromatin following DNA damage (PubMed:16818604). .
Tissue Specificity	Expressed in ER-positive breast cancer lines, but tends to be down-regulated ER-negative cells (at protein level).
Function	function:May modulate the functions ascribed to BRCA1 in transcriptional regulation, DNA repair, and/or cell cycle checkpoint control.,PTM:Phosphorylated upon DNA damage, probably by ATM or ATR. Hyperphosphorylation upon ionizing radiation results in dissociation from BRCA1.,PTM:Ubiquitinated; mediated by SIAH1 and leading to its subsequent proteasomal

Nanjing BYabscience technology Co.,Ltd



degradation.,subcellular location:Predominantly nuclear.,subunit:Interacts with CTBP, with the C-terminal (BRCT) domains of BRCA1, and with the retinoblastoma protein.,

Background

RB binding protein 8, endonuclease(RBBP8) Homo sapiens The protein encoded by this gene is a ubiquitously expressed nuclear protein. It is found among several proteins that bind directly to retinoblastoma protein, which regulates cell proliferation. This protein complexes with transcriptional co-repressor CTBP. It is also associated with BRCA1 and is thought to modulate the functions of BRCA1 in transcriptional regulation, DNA repair, and/or cell cycle checkpoint control. It is suggested that this gene may itself be a tumor suppressor acting in the same pathway as BRCA1. Three transcript variants encoding two different isoforms have been found for this gene. More transcript variants exist, but their full-length natures have not been determined. [provided by RefSeq, Jul 2008],

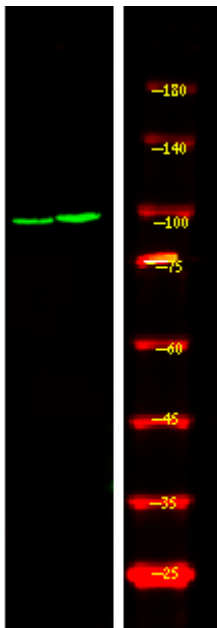
matters needing attention

Avoid repeated freezing and thawing!

Usage suggestions

This product can be used in immunological reaction related experiments. For more information, please consult technical personnel.

Products Images



Western Blot analysis of HepG2 cell, 2 Serum-free treated ,using primary antibody at 1:1000 dilution. Secondary antibody(catalog#:RS23920) was diluted at 1:10000