



Endoglycan Polyclonal Antibody

Catalog No	BYab-17106
Isotype	IgG
Reactivity	Human;Rat;Mouse;
Applications	WB;ELISA
Gene Name	PODXL2
Protein Name	Podocalyxin-like protein 2
Immunogen	Synthesized peptide derived from the Internal region of human Endoglycan.
Specificity	Endoglycan Polyclonal Antibody detects endogenous levels of Endoglycan protein.
Formulation	Liquid in PBS containing 50% glycerol, 0.5% BSA and 0.02% sodium azide.
Source	Polyclonal, Rabbit,IgG
Purification	The antibody was affinity-purified from rabbit antiserum by affinity-chromatography using epitope-specific immunogen.
Dilution	Western Blot: 1/500 - 1/2000. ELISA: 1/10000. Not yet tested in other applications.
Concentration	1 mg/ml
Purity	≥90%
Storage Stability	-20°C/1 year
Synonyms	PODXL2; Podocalyxin-like protein 2; Endoglycan
Observed Band	65kD
Cell Pathway	Membrane ; Single-pass type I membrane protein .
Tissue Specificity	Expressed in T-cells, B-cells and monocytes. Expression is higher on memory and germinal center cells than on naive B-cells (at protein level). Highly expressed in brain. Moderately expressed in pancreas, kidney and lymphoid node. Weakly expressed in liver. Detected in both endothelial cells and CD34+ bone marrow cells.
Function	PTM:Glycosylated; contains chondroitin sulfate. Displays sialylated O-linked oligosaccharides.,PTM:Sulfation and sialylated O-linked oligosaccharides are necessary for SELL/L-selectin binding.,similarity:Belongs to the podocalyxin family.,subunit:Homodimer; disulfide-linked. Binds to SELL/L-selectin.,tissue specificity:Highly expressed in brain. Moderately expressed in pancreas, kidney and lymphoid node. Weakly expressed in liver. Detected in both endothelial cells and CD34+ bone marrow cells.,

Nanjing BYabscience technology Co.,Ltd



Background

This gene is a member of the CD34 family of cell surface transmembrane proteins, which are characterized by an N-terminal extracellular mucin domain, globular and stalk domains, a single pass transmembrane region, and a charged cytoplasmic tail. The encoded protein is a ligand for vascular selectins. [provided by RefSeq, Oct 2012],

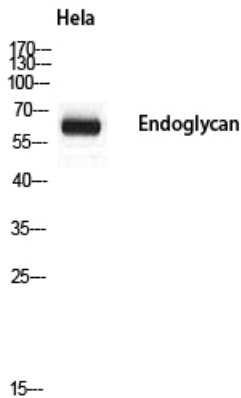
matters needing attention

Avoid repeated freezing and thawing!

Usage suggestions

This product can be used in immunological reaction related experiments. For more information, please consult technical personnel.

Products Images



Western blot analysis of HeLa using Endoglycan antibody. Secondary antibody(catalog#:RS0002) was diluted at 1:20000