



Nectin 2 Polyclonal Antibody

Catalog No	BYab-17102
Isotype	IgG
Reactivity	Human;Rat;Mouse;
Applications	WB;ELISA
Gene Name	PVRL2
Protein Name	Poliovirus receptor-related protein 2
Immunogen	Synthesized peptide derived from Poliovirus receptor-related protein 2 at AA range: 151-200
Specificity	Nectin 2 Polyclonal Antibody detects endogenous levels of Nectin 2 protein.
Formulation	Liquid in PBS containing 50% glycerol, 0.5% BSA and 0.02% sodium azide.
Source	Polyclonal, Rabbit,IgG
Purification	The antibody was affinity-purified from rabbit antiserum by affinity-chromatography using epitope-specific immunogen.
Dilution	Western Blot: 1/500 - 1/2000. ELISA: 1/10000. Not yet tested in other applications.
Concentration	1 mg/ml
Purity	≥90%
Storage Stability	-20°C/1 year
Synonyms	PVRL2; HVEB; PRR2; Poliovirus receptor-related protein 2; Herpes virus entry mediator B; Herpesvirus entry mediator B; HveB; Nectin-2; CD112
Observed Band	65kD
Cell Pathway	Cell membrane; Single-pass type I membrane protein.
Tissue Specificity	Ubiquitous.
Function	function:Probable cell adhesion protein.,similarity:Belongs to the nectin family.,similarity:Contains 1 Ig-like V-type (immunoglobulin-like) domain.,similarity:Contains 2 Ig-like C2-type (immunoglobulin-like) domains.,subunit:Can form trans-heterodimers with PVRL3/nectin-3 (By similarity). Interacts with CD226. Receptor for alphaherpesvirus (HSV-1, HSV-2 and pseudorabies virus) entry into cells. Binds with low affinity to TIGIT.,tissue specificity:Ubiquitous.,
Background	This gene encodes a single-pass type I membrane glycoprotein with two Ig-like C2-type domains and an Ig-like V-type domain. This protein is one of the plasma

Nanjing BYabscience technology Co.,Ltd



membrane components of adherens junctions. It also serves as an entry for certain mutant strains of herpes simplex virus and pseudorabies virus, and it is involved in cell to cell spreading of these viruses. Variations in this gene have been associated with differences in the severity of multiple sclerosis. Alternate transcriptional splice variants, encoding different isoforms, have been characterized. [provided by RefSeq, Jul 2008],

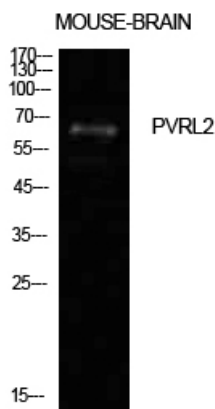
matters needing attention

Avoid repeated freezing and thawing!

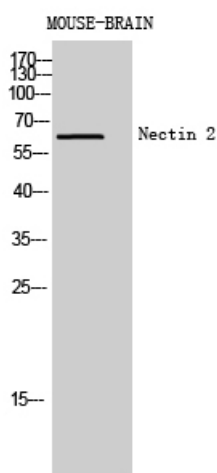
Usage suggestions

This product can be used in immunological reaction related experiments. For more information, please consult technical personnel.

Products Images



Western Blot analysis of mouse brain cells using Nectin 2 Polyclonal Antibody. Antibody was diluted at 1:500. Secondary antibody(catalog#:RS0002) was diluted at 1:20000



Western Blot analysis of MOUSE-BRAIN cells using Nectin 2 Polyclonal Antibody diluted at 1:500. Secondary antibody(catalog#:RS0002) was diluted at 1:20000