



Integrin α 2 Polyclonal Antibody

Catalog No	BYab-17097
Isotype	IgG
Reactivity	Human;Mouse;Rat
Applications	WB;IHC;IF;ELISA
Gene Name	ITGA2
Protein Name	Integrin alpha-2
Immunogen	The antiserum was produced against synthesized peptide derived from the C-terminal region of human ITGA2. AA range:1081-1130
Specificity	Integrin α 2 Polyclonal Antibody detects endogenous levels of Integrin α 2 protein.
Formulation	Liquid in PBS containing 50% glycerol, 0.5% BSA and 0.02% sodium azide.
Source	Polyclonal, Rabbit,IgG
Purification	The antibody was affinity-purified from rabbit antiserum by affinity-chromatography using epitope-specific immunogen.
Dilution	WB: 1/500 - 1/2000. IHC-p: 1:100-1:300. ELISA: 1/10000.. IF 1:50-200
Concentration	1 mg/ml
Purity	\geq 90%
Storage Stability	-20°C/1 year
Synonyms	ITGA2; CD49B; Integrin alpha-2; CD49 antigen-like family member B; Collagen receptor; Platelet membrane glycoprotein Ia; GPIa; VLA-2 subunit alpha; CD49b
Observed Band	130kD
Cell Pathway	Membrane; Single-pass type I membrane protein.
Tissue Specificity	Endothelial cell,Liver,Platelet,
Function	domain:The integrin I-domain (insert) is a VWFA domain. Integrins with I-domains do not undergo protease cleavage.,function:Integrin alpha-2/beta-1 is a receptor for laminin, collagen, collagen C-propeptides, fibronectin and E-cadherin. It recognizes the proline-hydroxylated sequence G-F-P-G-E-R in collagen. It is responsible for adhesion of platelets and other cells to collagens, modulation of collagen and collagenase gene expression, force generation and organization of newly synthesized extracellular matrix.,polymorphism:Position 534 is associated with platelet-specific alloantigen HPA-5 (Br). HPA-5A/Br(a) has Lys-534 and HPA-5B/Br(b) has Glu-534. HPA-5B is involved in neonatal alloimmune thrombocytopenia (NAIT or NATP). The Lys-534-Glu polymorphism may play a

Nanjing BYabscience technology Co.,Ltd



role in coronary artery disease (CAD).,similarity:Belongs to the integrin alpha chain family.,similarity:Contains 1 VWFA domai

Background

integrin subunit alpha 2(ITGA2) Homo sapiens This gene encodes the alpha subunit of a transmembrane receptor for collagens and related proteins. The encoded protein forms a heterodimer with a beta subunit and mediates the adhesion of platelets and other cell types to the extracellular matrix. Loss of the encoded protein is associated with bleeding disorder platelet-type 9. Antibodies against this protein are found in several immune disorders, including neonatal alloimmune thrombocytopenia. This gene is located adjacent to a related alpha subunit gene. Alternative splicing results in multiple transcript variants. [provided by RefSeq, Aug 2012],

matters needing attention

Avoid repeated freezing and thawing!

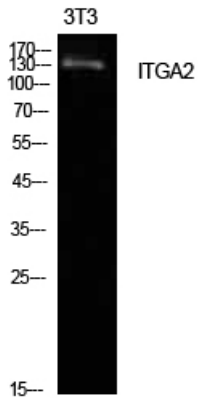
Usage suggestions

This product can be used in immunological reaction related experiments. For more information, please consult technical personnel.

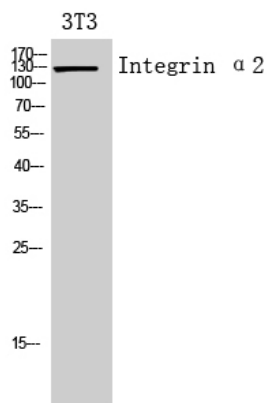
Nanjing BYabscience technology Co.,Ltd



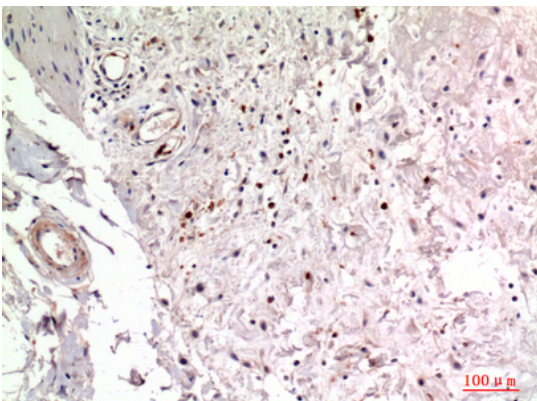
Products Images



Western Blot analysis of NIH-3T3 cells using Integrin α 2 Polyclonal Antibody. Secondary antibody(catalog#:RS0002) was diluted at 1:20000



Western Blot analysis of 3T3 cells using Integrin α 2 Polyclonal Antibody. Secondary antibody(catalog#:RS0002) was diluted at 1:20000



Immunohistochemical analysis of paraffin-embedded human-colon, antibody was diluted at 1:100