



Connexin-40 Polyclonal Antibody

Catalog No	BYab-17087
Isotype	IgG
Reactivity	Human;Mouse;Rat
Applications	WB;ELISA
Gene Name	GJA5
Protein Name	Gap junction alpha-5 protein
Immunogen	The antiserum was produced against synthesized peptide derived from the N-terminal region of human GJA5. AA range:21-70
Specificity	Connexin-40 Polyclonal Antibody detects endogenous levels of Connexin-40 protein.
Formulation	Liquid in PBS containing 50% glycerol, 0.5% BSA and 0.02% sodium azide.
Source	Polyclonal, Rabbit,IgG
Purification	The antibody was affinity-purified from rabbit antiserum by affinity-chromatography using epitope-specific immunogen.
Dilution	Western Blot: 1/500 - 1/2000. ELISA: 1/20000. Not yet tested in other applications.
Concentration	1 mg/ml
Purity	≥90%
Storage Stability	-20°C/1 year
Synonyms	GJA5; Gap junction alpha-5 protein; Connexin-40; Cx40
Observed Band	39kD
Cell Pathway	Cell membrane; Multi-pass membrane protein. Cell junction, gap junction.
Tissue Specificity	Placenta,
Function	disease:Defects in GJA5 are a cause of idiopathic atrial fibrillation [MIM:108770]. Atrial fibrillation (AF) is the most common cardiac arrhythmia and is characterized by rapid and irregular activation of the atrium.,function:One gap junction consists of a cluster of closely packed pairs of transmembrane channels, the connexons, through which materials of low MW diffuse from one cell to a neighboring cell.,similarity:Belongs to the connexin family. Alpha-type (group II) subfamily.,subunit:A connexon is composed of a hexamer of connexins.,
Background	This gene is a member of the connexin gene family. The encoded protein is a component of gap junctions, which are composed of arrays of intercellular channels that provide a route for the diffusion of low molecular weight materials

Nanjing BYabscience technology Co.,Ltd



from cell to cell. Mutations in this gene may be associated with atrial fibrillation. Alternatively spliced transcript variants encoding the same isoform have been described. [provided by RefSeq, Jul 2008],

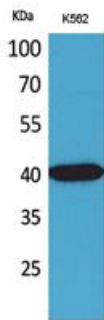
matters needing attention

Avoid repeated freezing and thawing!

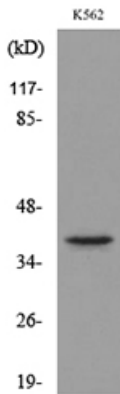
Usage suggestions

This product can be used in immunological reaction related experiments. For more information, please consult technical personnel.

Products Images



Western Blot analysis of K562 cells using Connexin-40 Polyclonal Antibody. Secondary antibody(catalog#:RS0002) was diluted at 1:20000



Western blot analysis of lysate from K562 cells, using GJA5 Antibody.