



Claudin-17 Polyclonal Antibody

Catalog No	BYab-17081
Isotype	IgG
Reactivity	Human;Rat;Mouse;
Applications	WB;ELISA
Gene Name	CLDN17
Protein Name	Claudin-17
Immunogen	Synthesized peptide derived from Claudin-17 . at AA range: 150-230
Specificity	Claudin-17 Polyclonal Antibody detects endogenous levels of Claudin-17 protein.
Formulation	Liquid in PBS containing 50% glycerol, 0.5% BSA and 0.02% sodium azide.
Source	Polyclonal, Rabbit,IgG
Purification	The antibody was affinity-purified from rabbit antiserum by affinity-chromatography using epitope-specific immunogen.
Dilution	Western Blot: 1/500 - 1/2000. ELISA: 1/20000. Not yet tested in other applications.
Concentration	1 mg/ml
Purity	≥90%
Storage Stability	-20°C/1 year
Synonyms	CLDN17; Claudin-17
Observed Band	24kD
Cell Pathway	Cell junction, tight junction . Cell membrane ; Multi-pass membrane protein .
Tissue Specificity	In the kidney, expressed in the proximal tubule and in the Henle's loop. In the distal convoluted tubule, not expressed in all tubules. Not detected in the collecting duct (at protein level).
Function	function:Plays a major role in tight junction-specific obliteration of the intercellular space, through calcium-independent cell-adhesion activity.,similarity:Belongs to the claudin family.,
Background	This gene encodes a member of the claudin family. Claudins are integral membrane proteins and components of tight junction strands. Tight junction strands serve as a physical barrier to prevent solutes and water from passing freely through the paracellular space between epithelial or endothelial cell sheets, and also play critical roles in maintaining cell polarity and signal transductions. This gene is intronless and is clustered with CLDN8 on chromosome 21q22.11. [provided by RefSeq, Jun 2010],

Nanjing BYabscience technology Co.,Ltd



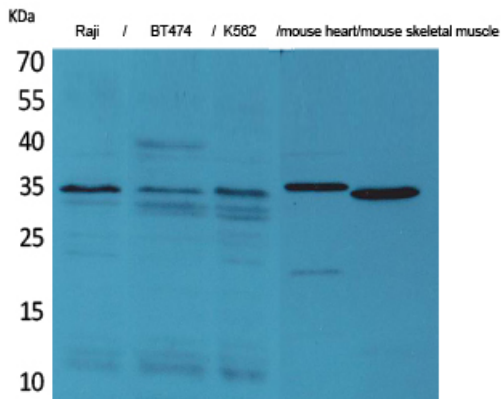
matters needing attention

Avoid repeated freezing and thawing!

Usage suggestions

This product can be used in immunological reaction related experiments. For more information, please consult technical personnel.

Products Images



Western Blot analysis of Raji, BT474, K562, mouse heart, mouse skeletal muscle cells using Claudin-17 Polyclonal Antibody. Secondary antibody(catalog#:RS0002) was diluted at 1:20000