



Contactin 1 Polyclonal Antibody

Catalog No	BYab-17080
Isotype	IgG
Reactivity	Human;Mouse;Rat
Applications	WB;ELISA
Gene Name	CNTN1
Protein Name	Contactin-1
Immunogen	Synthesized peptide derived from the N-terminal region of human Contactin 1.
Specificity	Contactin 1 Polyclonal Antibody detects endogenous levels of Contactin 1 protein.
Formulation	Liquid in PBS containing 50% glycerol, 0.5% BSA and 0.02% sodium azide.
Source	Polyclonal, Rabbit,IgG
Purification	The antibody was affinity-purified from rabbit antiserum by affinity-chromatography using epitope-specific immunogen.
Dilution	Western Blot: 1/500 - 1/2000. ELISA: 1/20000. Not yet tested in other applications.
Concentration	1 mg/ml
Purity	≥90%
Storage Stability	-20°C/1 year
Synonyms	CNTN1; Contactin-1; Glycoprotein gp135; Neural cell surface protein F3
Observed Band	113kD
Cell Pathway	[Isoform 1]: Cell membrane; Lipid-anchor, GPI-anchor; Extracellular side.; [Isoform 2]: Cell membrane; Lipid-anchor, GPI-anchor; Extracellular side.
Tissue Specificity	Strongly expressed in brain and in neuroblastoma and retinoblastoma cell lines. Lower levels of expression in lung, pancreas, kidney and skeletal muscle.
Function	disease:Defects in CNTN1 are the cause of Compton-North congenital myopathy [MIM:612540]. Compton-North congenital myopathy is a familial lethal form of congenital onset muscle weakness, inherited in an autosomal-recessive fashion and characterized by a secondary loss of beta2-syntrophin and alpha-dystrobrevin from the muscle sarcolemma, central nervous system involvement, and fetal akinesia.,function:Contactins mediate cell surface interactions during nervous system development. Involved in the formation of paranodal axo-glial junctions in myelinated peripheral nerves and in the signaling between axons and myelinating glial cells via its association with CNTNAP1. Participates in oligodendrocytes generation by acting as a ligand of NOTCH1. Its association with NOTCH1 promotes NOTCH1 activation through the released

Nanjing BYabscience technology Co.,Ltd



notch intracellular domain (NICD) and subsequent translocation to the nucl

Background

The protein encoded by this gene is a member of the immunoglobulin superfamily. It is a glycosylphosphatidylinositol (GPI)-anchored neuronal membrane protein that functions as a cell adhesion molecule. It may play a role in the formation of axon connections in the developing nervous system. Multiple alternatively spliced transcript variants encoding different isoforms have been found for this gene. [provided by RefSeq, Dec 2011],

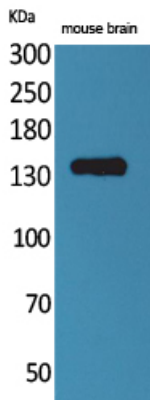
matters needing attention

Avoid repeated freezing and thawing!

Usage suggestions

This product can be used in immunological reaction related experiments. For more information, please consult technical personnel.

Products Images



Western Blot analysis of mouse brain cells using Contactin 1 Polyclonal Antibody. Secondary antibody(catalog#:RS0002) was diluted at 1:20000

Nanjing BYabscience technology Co.,Ltd