



TROP-2 Polyclonal Antibody

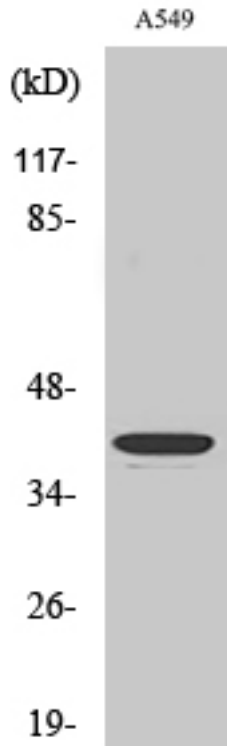
Catalog No	BYab-17073
Isotype	IgG
Reactivity	Human;Mouse;Rat
Applications	WB;IHC;IF;ELISA
Gene Name	TACSTD2
Protein Name	Tumor-associated calcium signal transducer 2
Immunogen	The antiserum was produced against synthesized peptide derived from human TACD2. AA range:131-180
Specificity	TROP-2 Polyclonal Antibody detects endogenous levels of TROP-2 protein.
Formulation	Liquid in PBS containing 50% glycerol, 0.5% BSA and 0.02% sodium azide.
Source	Polyclonal, Rabbit,IgG
Purification	The antibody was affinity-purified from rabbit antiserum by affinity-chromatography using epitope-specific immunogen.
Dilution	WB: 1/500 - 1/2000. IHC: 1/100 - 1/300. ELISA: 1/20000.. IF 1:50-200
Concentration	1 mg/ml
Purity	≥90%
Storage Stability	-20°C/1 year
Synonyms	TACSTD2; GA733-1; M1S1; TROP2; Tumor-associated calcium signal transducer 2; Cell surface glycoprotein Trop-2; Membrane component chromosome 1 surface marker 1; Pancreatic carcinoma marker protein GA733-1
Observed Band	35kD
Cell Pathway	Membrane; Single-pass type I membrane protein.
Tissue Specificity	Placenta, pancreatic carcinoma cell lines.
Function	disease:Defects in TACSTD2 are the cause of gelatinous drop-like corneal dystrophy (GDL) [MIM:204870]; also known as lattice corneal dystrophy type III. GDL is an autosomal recessive disorder characterized by grayish corneal amyloid deposits that cause severe visual impairment.,function:GA733 tumor-associated antigen gene family may function as growth factor receptors.,PTM:The N-terminus is blocked.,similarity:Contains 1 thyroglobulin type-1 domain.,tissue specificity:Placenta, pancreatic carcinoma cell lines.,

Nanjing BYabscience technology Co.,Ltd

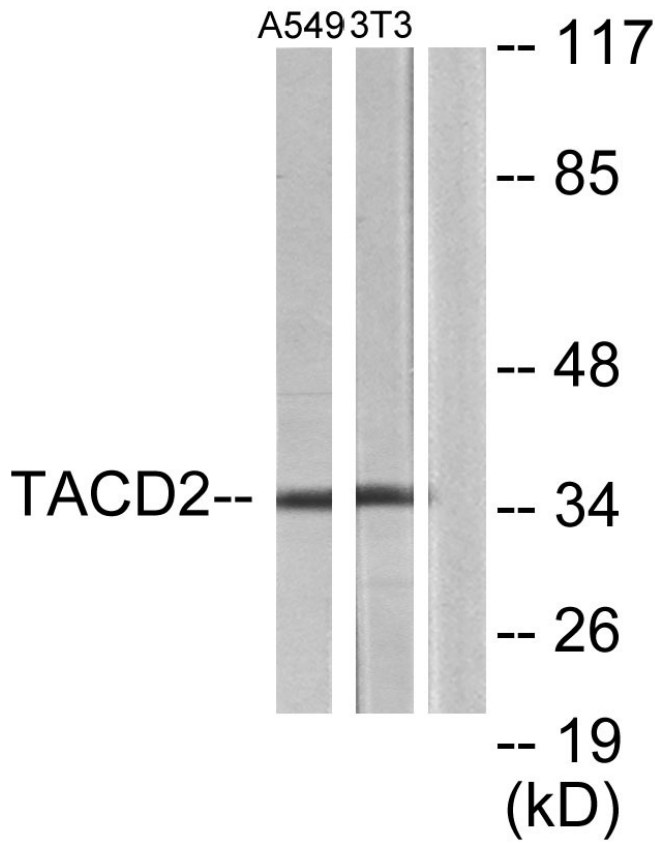


Background	This intronless gene encodes a carcinoma-associated antigen. This antigen is a cell surface receptor that transduces calcium signals. Mutations of this gene have been associated with gelatinous drop-like corneal dystrophy.[provided by RefSeq, Dec 2009],
matters needing attention	Avoid repeated freezing and thawing!
Usage suggestions	This product can be used in immunological reaction related experiments. For more information, please consult technical personnel.

Products Images



Western Blot analysis of various cells using TROP-2 Polyclonal Antibody. Secondary antibody(catalog#:RS0002) was diluted at 1:20000



Western blot analysis of lysates from A549 and NIH/3T3 cells, using TACD2 Antibody. The lane on the right is blocked with the synthesized peptide.