



# Thrombospondin 4 Polyclonal Antibody

<b>Catalog No</b>	BYab-17072
<b>Isotype</b>	IgG
<b>Reactivity</b>	Human;Rat;Mouse;
<b>Applications</b>	WB;IHC;IF;ELISA
<b>Gene Name</b>	THBS4
<b>Protein Name</b>	Thrombospondin-4
<b>Immunogen</b>	The antiserum was produced against synthesized peptide derived from human THBS4. AA range:561-610
<b>Specificity</b>	Thrombospondin 4 Polyclonal Antibody detects endogenous levels of Thrombospondin 4 protein.
<b>Formulation</b>	Liquid in PBS containing 50% glycerol, 0.5% BSA and 0.02% sodium azide.
<b>Source</b>	Polyclonal, Rabbit,IgG
<b>Purification</b>	The antibody was affinity-purified from rabbit antiserum by affinity-chromatography using epitope-specific immunogen.
<b>Dilution</b>	WB 1:500-2000;IHC-p 1:100-500;IF/ICC 1:100-500;ELISA 1:5000-20000
<b>Concentration</b>	1 mg/ml
<b>Purity</b>	≥90%
<b>Storage Stability</b>	-20°C/1 year
<b>Synonyms</b>	THBS4; TSP4; Thrombospondin-4
<b>Observed Band</b>	
<b>Cell Pathway</b>	Endoplasmic reticulum . Sarcoplasmic reticulum . Secreted . Secreted, extracellular space . Secreted, extracellular space, extracellular matrix .
<b>Tissue Specificity</b>	Heart,PNS,Synovium,
<b>Function</b>	function:Adhesive glycoprotein that mediates cell-to-cell and cell-to-matrix interactions. Can bind to fibrinogen, fibronectin, laminin and type V collagen.,similarity:Belongs to the thrombospondin family.,similarity:Contains 1 TSP C-terminal (TSPC) domain.,similarity:Contains 1 TSP N-terminal (TSPN) domain.,similarity:Contains 4 EGF-like domains.,similarity:Contains 8 TSP type-3 repeats.,subunit:Homopentamer; disulfide-linked.,
<b>Background</b>	thrombospondin 4(THBS4) Homo sapiens The protein encoded by this gene belongs to the thrombospondin protein family. Thrombospondin family members are adhesive glycoproteins that mediate cell-to-cell and cell-to-matrix interactions. This protein forms a pentamer and can bind to heparin and calcium. It is involved

Nanjing BYabscience technology Co.,Ltd



in local signaling in the developing and adult nervous system, and it contributes to spinal sensitization and neuropathic pain states. This gene is activated during the stromal response to invasive breast cancer. It may also play a role in inflammatory responses in Alzheimer's disease. Alternative splicing results in multiple transcript variants. [provided by RefSeq, Apr 2015],

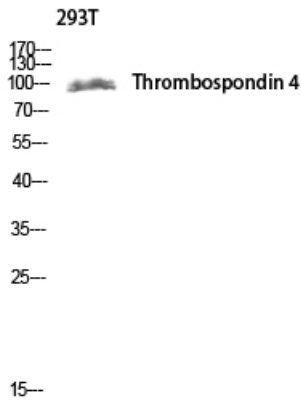
**matters needing attention**

Avoid repeated freezing and thawing!

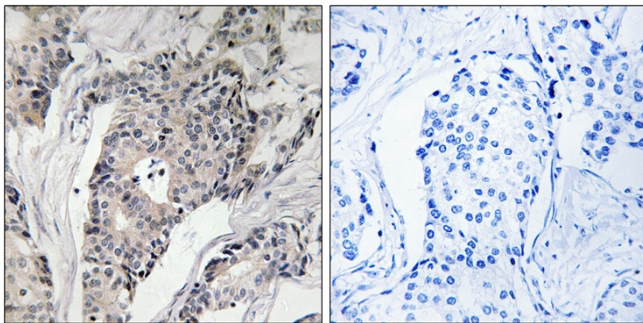
**Usage suggestions**

This product can be used in immunological reaction related experiments. For more information, please consult technical personnel.

## Products Images



Western blot analysis of 293T lysis using Thrombospondin 4 antibody. Antibody was diluted at 1:1000



Immunohistochemistry analysis of paraffin-embedded human breast carcinoma, using THBS4 Antibody. The picture on the right is blocked with the synthesized peptide.