



Mucin 13 Polyclonal Antibody

Catalog No	BYab-17050
Isotype	IgG
Reactivity	Human;Rat;Mouse;
Applications	WB;IHC;IF;ELISA
Gene Name	MUC13
Protein Name	Mucin-13
Immunogen	The antiserum was produced against synthesized peptide derived from human MUC13. AA range:421-470
Specificity	Mucin 13 Polyclonal Antibody detects endogenous levels of Mucin 13 protein.
Formulation	Liquid in PBS containing 50% glycerol, 0.5% BSA and 0.02% sodium azide.
Source	Polyclonal, Rabbit,IgG
Purification	The antibody was affinity-purified from rabbit antiserum by affinity-chromatography using epitope-specific immunogen.
Dilution	Western Blot: 1/500 - 1/2000. Immunohistochemistry: 1/100 - 1/300. Immunofluorescence: 1/200 - 1/1000. ELISA: 1/20000. Not yet tested in other applications.
Concentration	1 mg/ml
Purity	≥90%
Storage Stability	-20°C/1 year
Synonyms	MUC13; DRCC1; RECC; Mucin-13; MUC-13; Down-regulated in colon cancer 1
Observed Band	50kD
Cell Pathway	Cell membrane ; Single-pass type I membrane protein . Apical cell membrane . Secreted . Also exists as a soluble form.
Tissue Specificity	Highly expressed in epithelial tissues, particularly those of the gastrointestinal and respiratory tracts, such as large intestine and trachea, followed by kidney, small intestine, appendix and stomach.
Function	function:Epithelial and hemopoietic transmembrane mucin that may play a role in cell signaling.,PTM:Cleaved into two subunits, alpha and beta, probably between the first EGF domain and the SEA domain. Beta subunit contains the cytoplasmic tail and alpha subunit the extracellular tail. The homo-oligomerization into dimers is dependent on intrachain disulfide bonds.,PTM:Highly N-glycosylated.,similarity:Contains 1 SEA domain.,similarity:Contains 3 EGF-like domains.,subcellular location:Also exists as a soluble form.,subunit:Homodimer of beta subunits.,tissue specificity:Highly expressed in epithelial tissues, particularly

Nanjing BYabscience technology Co.,Ltd



those of the gastrointestinal and respiratory tracts, such as large intestine and trachea, followed by kidney, small intestine, appendix and stomach.,

Background

Epithelial mucins, such as MUC13, are a family of secreted and cell surface glycoproteins expressed by ductal and glandular epithelial tissues (Williams et al., 2001 [PubMed 11278439]).[supplied by OMIM, Jul 2008],

matters needing attention

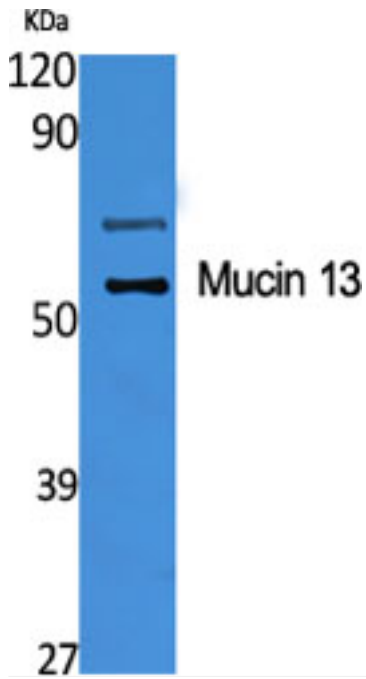
Avoid repeated freezing and thawing!

Usage suggestions

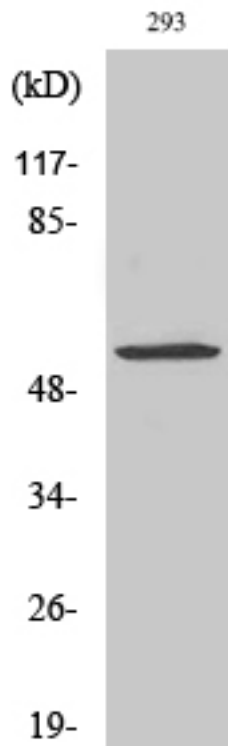
This product can be used in immunological reaction related experiments. For more information, please consult technical personnel.



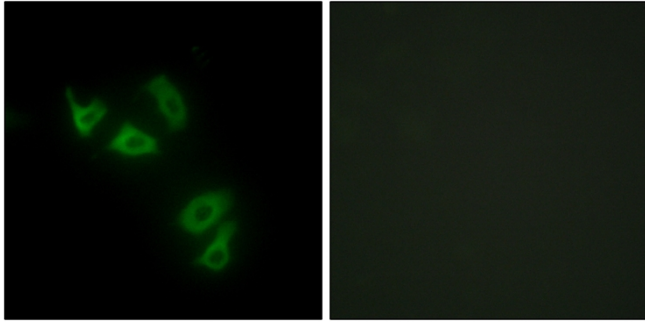
Products Images



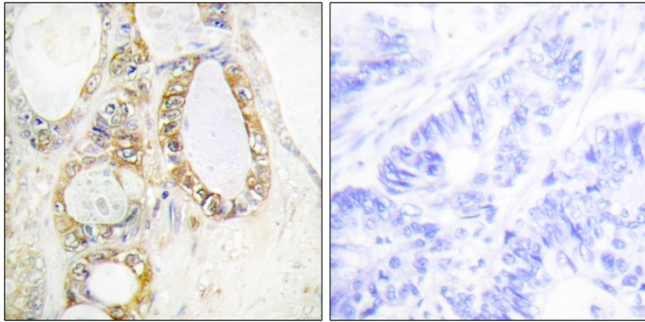
Western Blot analysis of various cells using Mucin 13 Polyclonal Antibody diluted at 1:1000



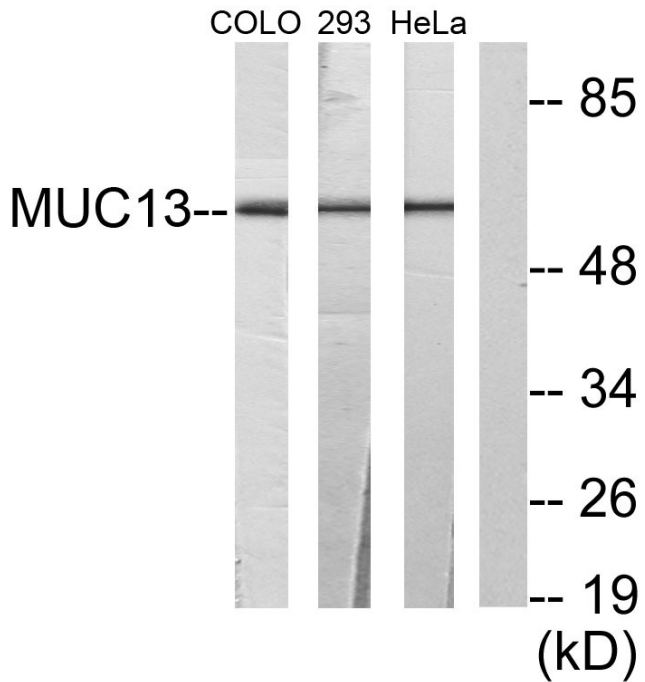
Western Blot analysis of COLO205 cells using Mucin 13 Polyclonal Antibody diluted at 1:1000



Immunofluorescence analysis of HepG2 cells, using MUC13 Antibody. The picture on the right is blocked with the synthesized peptide.



Immunohistochemistry analysis of paraffin-embedded human colon carcinoma tissue, using MUC13 Antibody. The picture on the right is blocked with the synthesized peptide.



Western blot analysis of lysates from 293, HeLa, and COLO205 cells, using MUC13 Antibody. The lane on the right is blocked with the synthesized peptide.