



Laminin α -5 Polyclonal Antibody

Catalog No	BYab-17041
Isotype	IgG
Reactivity	Human;Mouse
Applications	WB;IHC;IF;ELISA
Gene Name	LAMA5
Protein Name	Laminin subunit alpha-5
Immunogen	The antiserum was produced against synthesized peptide derived from human LAMA5. AA range:2381-2430
Specificity	Laminin α -5 Polyclonal Antibody detects endogenous levels of Laminin α -5 protein.
Formulation	Liquid in PBS containing 50% glycerol, 0.5% BSA and 0.02% sodium azide.
Source	Polyclonal, Rabbit,IgG
Purification	The antibody was affinity-purified from rabbit antiserum by affinity-chromatography using epitope-specific immunogen.
Dilution	Western Blot: 1/500 - 1/2000. IHC-p: 1:100-300 ELISA: 1/20000. IF 1:100-300 Not yet tested in other applications.
Concentration	1 mg/ml
Purity	$\geq 90\%$
Storage Stability	-20°C/1 year
Synonyms	LAMA5; KIAA0533; KIAA1907; Laminin subunit alpha-5; Laminin-10 subunit alpha; Laminin-11 subunit alpha; Laminin-15 subunit alpha
Observed Band	400kD
Cell Pathway	Secreted, extracellular space, extracellular matrix, basement membrane. Major component.
Tissue Specificity	Expressed in heart, lung, kidney, skeletal muscle, pancreas, retina and placenta. Little or no expression in brain and liver.
Function	domain:Domain G is globular and is part of the major cell-binding site located in the long arm of the laminin heterotrimer.,function:Binding to cells via a high affinity receptor, laminin is thought to mediate the attachment, migration and organization of cells into tissues during embryonic development by interacting with other extracellular matrix components.,similarity:Contains 1 laminin IV type A domain.,similarity:Contains 1 laminin N-terminal domain.,similarity:Contains 22 laminin EGF-like domains.,similarity:Contains 5 laminin G-like domains.,subcellular location:Major component.,subunit:Laminin-15 complex is an heterotrimer composed of three chains (alpha-5/beta-2/gamma-3) which are

Nanjing BYabscience technology Co.,Ltd



bound to each other by disulfide bonds into a cross-shaped molecule comprising one long and three short arms with globules at each end. tissue specificity: Expressed in heart, lung, kidney, skeletal mus

Background

This gene encodes one of the vertebrate laminin alpha chains. Laminins, a family of extracellular matrix glycoproteins, are the major noncollagenous constituent of basement membranes. They have been implicated in a wide variety of biological processes including cell adhesion, differentiation, migration, signaling, neurite outgrowth and metastasis. Laminins are composed of 3 non identical chains: laminin alpha, beta and gamma (formerly A, B1, and B2, respectively) and they form a cruciform structure consisting of 3 short arms, each formed by a different chain, and a long arm composed of all 3 chains. Each laminin chain is a multidomain protein encoded by a distinct gene. The protein encoded by this gene is the alpha-5 subunit of of laminin-10 (laminin-511), laminin-11 (laminin-521) and laminin-15 (laminin-523). [provided by RefSeq, Jun 2013],

matters needing attention

Avoid repeated freezing and thawing!

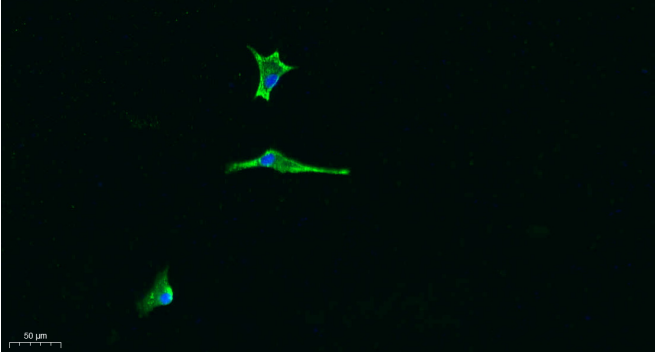
Usage suggestions

This product can be used in immunological reaction related experiments. For more information, please consult technical personnel.

Nanjing BYabscience technology Co.,Ltd

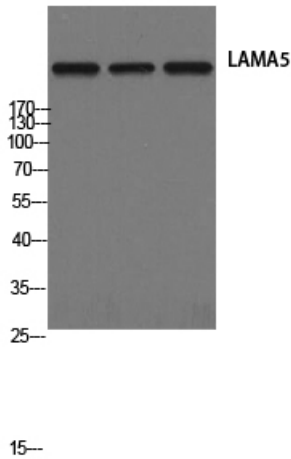


Products Images

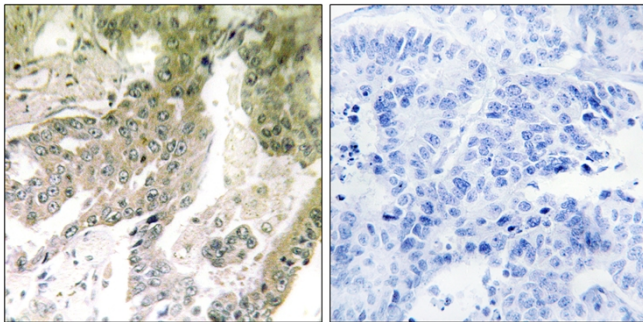


Immunofluorescence analysis of A549. 1, primary Antibody was diluted at 1:200(4°C overnight). 2, Goat Anti Rabbit IgG (H&L) - Alexa Fluor 488 Secondary antibody was diluted at 1:1000(room temperature, 50min).3, Picture B: DAPI(blue) 10min.

RAW HepG2 A549

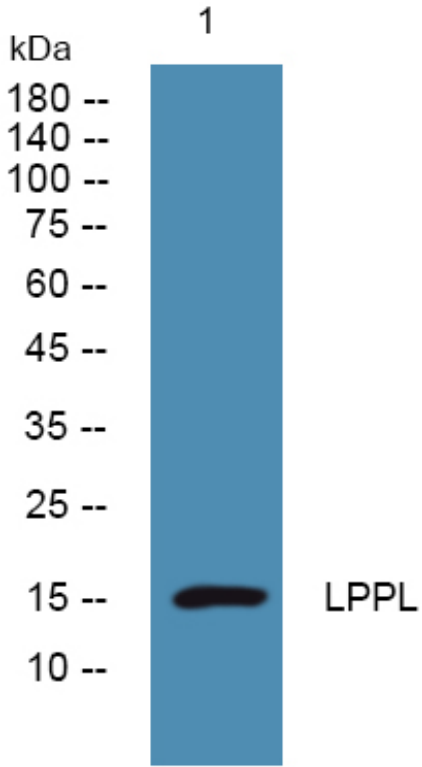


Western Blot analysis of RAW HepG2 A549 cells using Laminin α -5 Polyclonal Antibody



Immunohistochemistry analysis of paraffin-embedded human lung carcinoma tissue, using LAMA5 Antibody. The picture on the right is blocked with the synthesized peptide.

Nanjing BYabscience technology Co.,Ltd



Western blot analysis of lysates from DU145 cells,
primary antibody was diluted at 1:1000, 4° over night