



Integrin β 5 Polyclonal Antibody

Catalog No	BYab-17035
Isotype	IgG
Reactivity	Human;Mouse;Rat;Monkey
Applications	WB;ELISA
Gene Name	ITGB5
Protein Name	Integrin beta-5
Immunogen	The antiserum was produced against synthesized peptide derived from human Integrin beta5. AA range:721-770
Specificity	Integrin β 5 Polyclonal Antibody detects endogenous levels of Integrin β 5 protein.
Formulation	Liquid in PBS containing 50% glycerol, 0.5% BSA and 0.02% sodium azide.
Source	Polyclonal, Rabbit,IgG
Purification	The antibody was affinity-purified from rabbit antiserum by affinity-chromatography using epitope-specific immunogen.
Dilution	Western Blot: 1/500 - 1/2000. ELISA: 1/20000. Not yet tested in other applications.
Concentration	1 mg/ml
Purity	\geq 90%
Storage Stability	-20°C/1 year
Synonyms	ITGB5; Integrin beta-5
Observed Band	88kD
Cell Pathway	Membrane; Single-pass type I membrane protein.
Tissue Specificity	Brain,Kidney,Thymic epithelium,
Function	function:Integrin alpha-V/beta-5 is a receptor for fibronectin. It recognizes the sequence R-G-D in its ligand.,similarity:Belongs to the integrin beta chain family.,similarity:Contains 1 PSI domain.,similarity:Contains 1 VWFA domain.,subunit:Heterodimer of an alpha and a beta subunit. Beta-5 associates with alpha-V.,
Background	function:Integrin alpha-V/beta-5 is a receptor for fibronectin. It recognizes the sequence R-G-D in its ligand.,similarity:Belongs to the integrin beta chain family.,similarity:Contains 1 PSI domain.,similarity:Contains 1 VWFA domain.,subunit:Heterodimer of an alpha and a beta subunit. Beta-5 associates with alpha-V.,

Nanjing BYabscience technology Co.,Ltd



matters needing attention

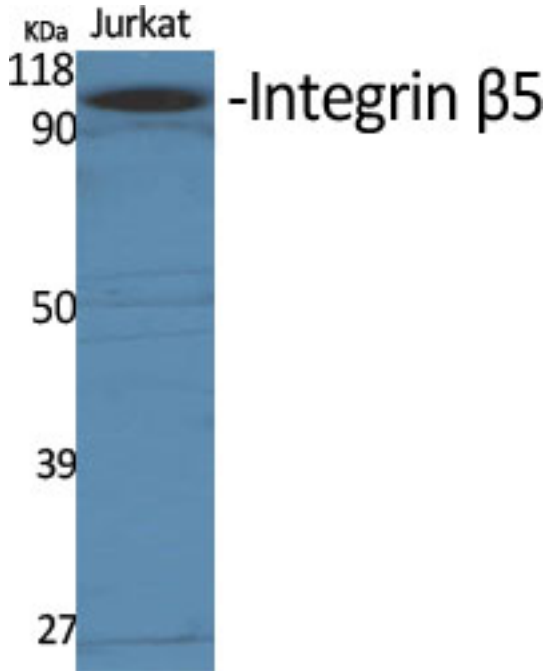
Avoid repeated freezing and thawing!

Usage suggestions

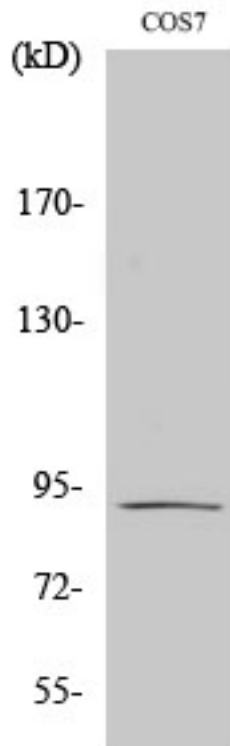
This product can be used in immunological reaction related experiments. For more information, please consult technical personnel.



Products Images

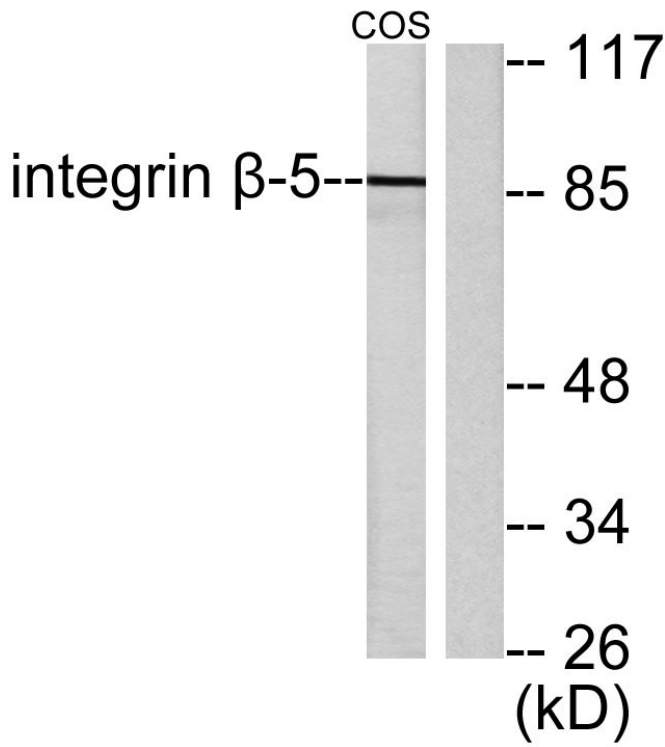


Western Blot analysis of various cells using Integrin β 5 Polyclonal Antibody diluted at 1:1000



Western Blot analysis of COS7 cells using Integrin β 5 Polyclonal Antibody diluted at 1:1000

Nanjing BYabscience technology Co.,Ltd



Western blot analysis of lysates from COS7 cells, using Integrin beta5 Antibody. The lane on the right is blocked with the synthesized peptide.