



# IGSF4C Polyclonal Antibody

<b>Catalog No</b>	BYab-17027
<b>Isotype</b>	IgG
<b>Reactivity</b>	Human;Mouse;Rat
<b>Applications</b>	WB;IHC;IF;ELISA
<b>Gene Name</b>	CADM4
<b>Protein Name</b>	Cell adhesion molecule 4
<b>Immunogen</b>	The antiserum was produced against synthesized peptide derived from human CADM4. AA range:339-388
<b>Specificity</b>	IGSF4C Polyclonal Antibody detects endogenous levels of IGSF4C protein.
<b>Formulation</b>	Liquid in PBS containing 50% glycerol, 0.5% BSA and 0.02% sodium azide.
<b>Source</b>	Polyclonal, Rabbit,IgG
<b>Purification</b>	The antibody was affinity-purified from rabbit antiserum by affinity-chromatography using epitope-specific immunogen.
<b>Dilution</b>	Western Blot: 1/500 - 1/2000. Immunohistochemistry: 1/100 - 1/300. Immunofluorescence: 1/200 - 1/1000. ELISA: 1/20000. Not yet tested in other applications.
<b>Concentration</b>	1 mg/ml
<b>Purity</b>	≥90%
<b>Storage Stability</b>	-20°C/1 year
<b>Synonyms</b>	CADM4; IGSF4C; NECL4; TSLL2; Cell adhesion molecule 4; Immunoglobulin superfamily member 4C; IgSF4C; Nectin-like protein 4; NECL-4; TSLC1-like protein 2
<b>Observed Band</b>	48kD
<b>Cell Pathway</b>	Membrane ; Single-pass type I membrane protein .
<b>Tissue Specificity</b>	Expressed in brain, prostate, brain, kidney and some other organs.
<b>Function</b>	function:Involved in the cell-cell adhesion. Has calcium- and magnesium-independent cell-cell adhesion activity. May have tumor-suppressor activity.,PTM:N-glycosylated.,similarity:Belongs to the nectin family.,similarity:Contains 1 Ig-like V-type (immunoglobulin-like) domain.,similarity:Contains 2 Ig-like C2-type (immunoglobulin-like) domains.,subunit:Monomer and homodimer.,tissue specificity:Expressed in brain, prostate, brain, kidney and some other organs.,

Nanjing BYabscience technology Co.,Ltd



### Background

function:Involved in the cell-cell adhesion. Has calcium- and magnesium-independent cell-cell adhesion activity. May have tumor-suppressor activity.,PTM:N-glycosylated.,similarity:Belongs to the nectin family.,similarity:Contains 1 Ig-like V-type (immunoglobulin-like) domain.,similarity:Contains 2 Ig-like C2-type (immunoglobulin-like) domains.,subunit:Monomer and homodimer.,tissue specificity:Expressed in brain, prostate, brain, kidney and some other organs.,

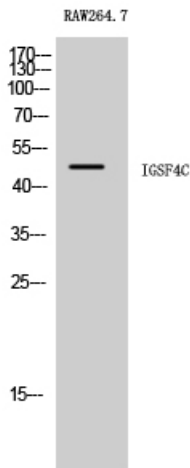
### matters needing attention

Avoid repeated freezing and thawing!

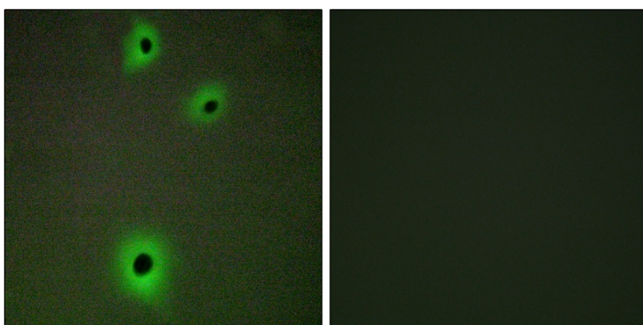
### Usage suggestions

This product can be used in immunological reaction related experiments. For more information, please consult technical personnel.

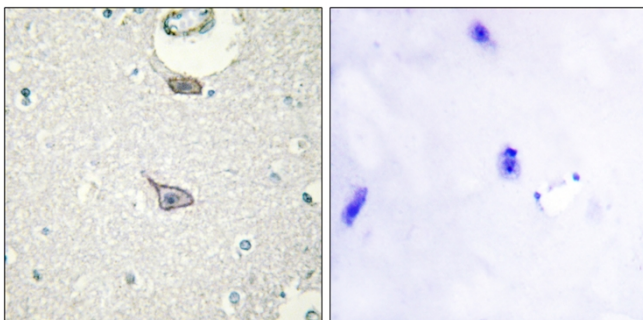
## Products Images



Western Blot analysis of RAW264.7 cells using IGSF4C Polyclonal Antibody

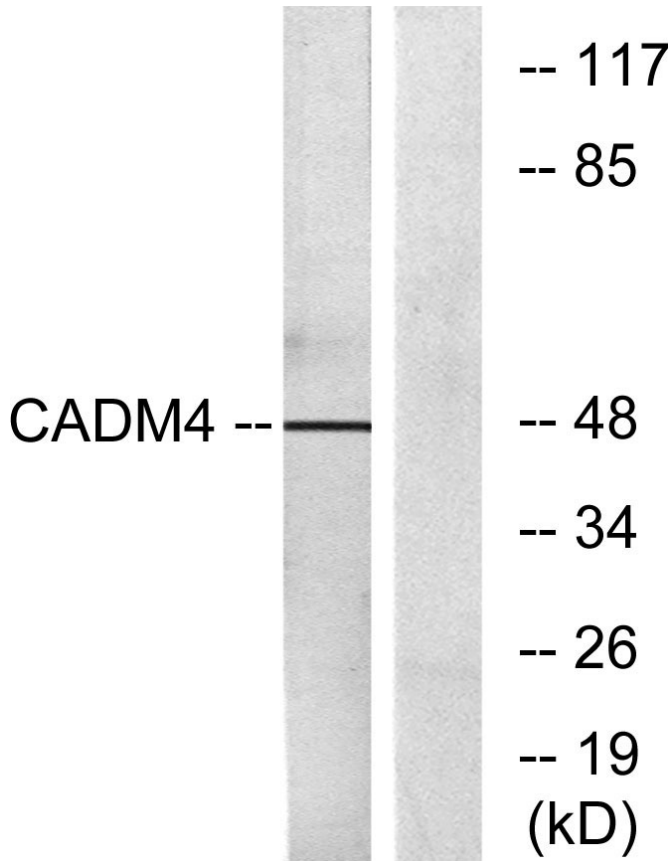


Immunofluorescence analysis of A549 cells, using CADM4 Antibody. The picture on the right is blocked with the synthesized peptide.

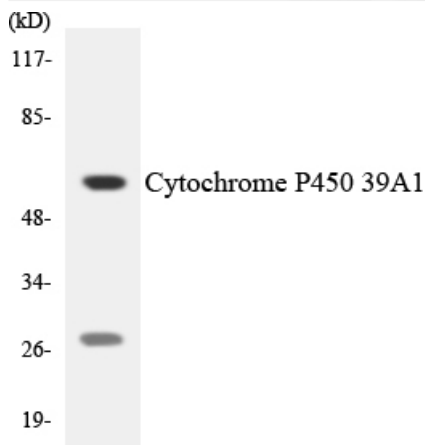


Immunohistochemistry analysis of paraffin-embedded human brain tissue, using CADM4 Antibody. The picture on the right is blocked with the synthesized peptide.

**Nanjing BYabscience technology Co.,Ltd**



Western blot analysis of lysates from RAW264.7 cells, using CADM4 Antibody. The lane on the right is blocked with the synthesized peptide.



Western blot analysis of the lysates from HeLa cells using Cytochrome P450 39A1 antibody.