



# IGSF4B Polyclonal Antibody

<b>Catalog No</b>	BYab-17026
<b>Isotype</b>	IgG
<b>Reactivity</b>	Human;Mouse;Rat
<b>Applications</b>	WB;IHC;IF;ELISA
<b>Gene Name</b>	CADM3
<b>Protein Name</b>	Cell adhesion molecule 3
<b>Immunogen</b>	The antiserum was produced against synthesized peptide derived from human CADM3. AA range:141-190
<b>Specificity</b>	IGSF4B Polyclonal Antibody detects endogenous levels of IGSF4B protein.
<b>Formulation</b>	Liquid in PBS containing 50% glycerol, 0.5% BSA and 0.02% sodium azide.
<b>Source</b>	Polyclonal, Rabbit,IgG
<b>Purification</b>	The antibody was affinity-purified from rabbit antiserum by affinity-chromatography using epitope-specific immunogen.
<b>Dilution</b>	Western Blot: 1/500 - 1/2000. Immunohistochemistry: 1/100 - 1/300. Immunofluorescence: 1/200 - 1/1000. ELISA: 1/5000. Not yet tested in other applications.
<b>Concentration</b>	1 mg/ml
<b>Purity</b>	≥90%
<b>Storage Stability</b>	-20°C/1 year
<b>Synonyms</b>	CADM3; IGSF4B; NECL1; SYNCAM3; TSLL1; Cell adhesion molecule 3; Brain immunoglobulin receptor; Immunoglobulin superfamily member 4B; IgSF4B; Nectin-like protein 1; NECL-1; Synaptic cell adhesion molecule 3; SynCAM3; TSLC1-like protein 1; TS
<b>Observed Band</b>	43kD
<b>Cell Pathway</b>	Cell membrane ; Single-pass type I membrane protein . Cell junction .
<b>Tissue Specificity</b>	Isoform 1 is expressed mainly in adult and fetal brain. Isoform 2 is highly expressed in adult brain and weakly expressed in placenta. In brain, Isoform 2 is highly expressed in cerebellum.
<b>Function</b>	domain:The cytoplasmic region mediates interaction with EPB41L1, DLG3, MPP6 and CASK.,function:Involved in the cell-cell adhesion. Has both calcium-independent homophilic cell-cell adhesion activity and calcium-independent heterophilic cell-cell adhesion activity with IGSF4, PVRL1 and PVRL3. Interaction with EPB41L1 may regulate structure or function of

**Nanjing BYabscience technology Co.,Ltd**



cell-cell junctions.,induction:Markedly in glioma cell lines and prostate cancer cell lines.,similarity:Belongs to the nectin family.,similarity:Contains 1 Ig-like V-type (immunoglobulin-like) domain.,similarity:Contains 2 Ig-like C2-type (immunoglobulin-like) domains.,subcellular location:Localized at the cell-cell attached sites of the plasma membrane.,subunit:Homodimer. Can form trans-heterodimers with PVRL3/nectin-3. Interacts with EPB41L1, DLG3, MPP6 and CASK.,tissue specificity:Isoform 1 is expressed mainly in adult and fetal brain.

**Background**

cell adhesion molecule 3(CADM3) Homo sapiens IGSF4B is a brain-specific protein related to the calcium-independent cell-cell adhesion molecules known as nectins (see PVRL3; MIM 607147) (Kakunaga et al., 2005 [PubMed 15741237]).[supplied by OMIM, Mar 2008],

**matters needing attention**

Avoid repeated freezing and thawing!

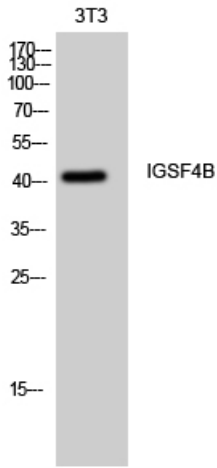
**Usage suggestions**

This product can be used in immunological reaction related experiments. For more information, please consult technical personnel.

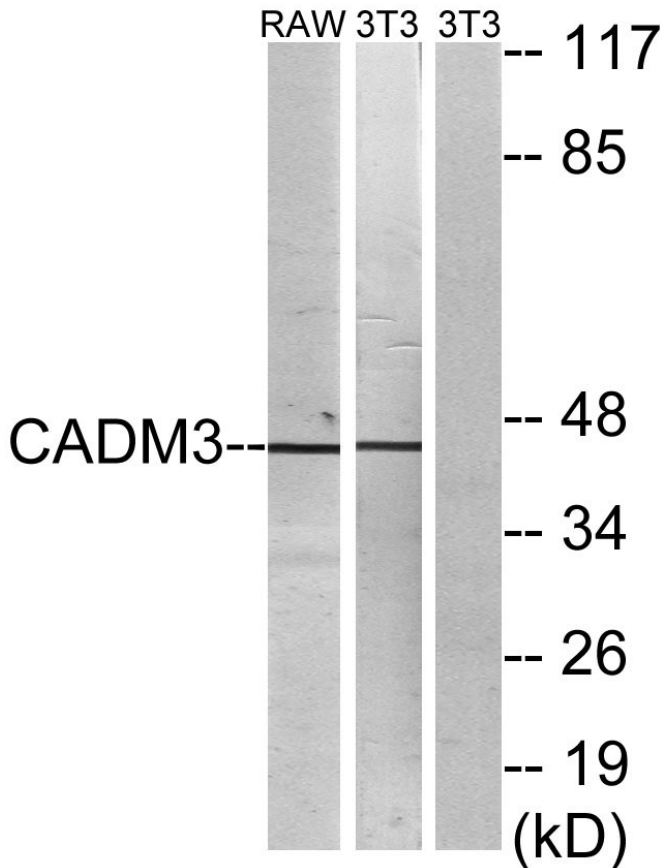
Nanjing BYabscience technology Co.,Ltd



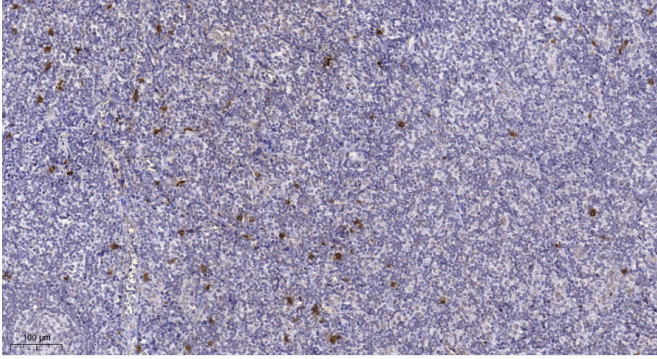
## Products Images



Western Blot analysis of 3T3 cells using IGSF4B Polyclonal Antibody



Western blot analysis of lysates from NIH/3T3 and RAW264.7 cells, using CADM3 Antibody. The lane on the right is blocked with the synthesized peptide.



Immunohistochemical analysis of paraffin-embedded human tonsil. 1, Tris-EDTA,pH9.0 was used for antigen retrieval. 2 Antibody was diluted at 1:200(4° overnight).3,Secondary antibody was diluted at 1:200(room temperature, 45min).