



ICAM-2 Polyclonal Antibody

Catalog No	BYab-17025
Isotype	IgG
Reactivity	Human;Rat;Mouse;
Applications	WB;ELISA
Gene Name	ICAM2
Protein Name	Intercellular adhesion molecule 2
Immunogen	The antiserum was produced against synthesized peptide derived from human ICAM2. AA range:151-200
Specificity	ICAM-2 Polyclonal Antibody detects endogenous levels of ICAM-2 protein.
Formulation	Liquid in PBS containing 50% glycerol, 0.5% BSA and 0.02% sodium azide.
Source	Polyclonal, Rabbit,IgG
Purification	The antibody was affinity-purified from rabbit antiserum by affinity-chromatography using epitope-specific immunogen.
Dilution	Western Blot: 1/500 - 1/2000. ELISA: 1/10000. Not yet tested in other applications.
Concentration	1 mg/ml
Purity	≥90%
Storage Stability	-20°C/1 year
Synonyms	ICAM2; Intercellular adhesion molecule 2; ICAM-2; CD antigen CD102
Observed Band	30kD
Cell Pathway	Membrane ; Single-pass type I membrane protein . Cell projection, microvillus . Co-localizes with RDX, EZR and MSN in microvilli .
Tissue Specificity	Aorta endothelial cell,Blood,Brain,Endothelial cell,Plasma,Spleen,
Function	function:ICAM proteins are ligands for the leukocyte adhesion protein LFA-1 (integrin alpha-L/beta-2). ICAM2 may play a role in lymphocyte recirculation by blocking LFA-1-dependent cell adhesion. It mediates adhesive interactions important for antigen-specific immune response, NK-cell mediated clearance, lymphocyte recirculation, and other cellular interactions important for immune response and surveillance.,online information:ICAM-2,similarity:Belongs to the immunoglobulin superfamily. ICAM family.,similarity:Contains 2 Ig-like C2-type (immunoglobulin-like) domains.,
Background	The protein encoded by this gene is a member of the intercellular adhesion molecule (ICAM) family. All ICAM proteins are type I transmembrane

Nanjing BYabscience technology Co.,Ltd



glycoproteins, contain 2-9 immunoglobulin-like C2-type domains, and bind to the leukocyte adhesion LFA-1 protein. This protein may play a role in lymphocyte recirculation by blocking LFA-1-dependent cell adhesion. It mediates adhesive interactions important for antigen-specific immune response, NK-cell mediated clearance, lymphocyte recirculation, and other cellular interactions important for immune response and surveillance. Several transcript variants encoding the same protein have been found for this gene. [provided by RefSeq, Jul 2008],

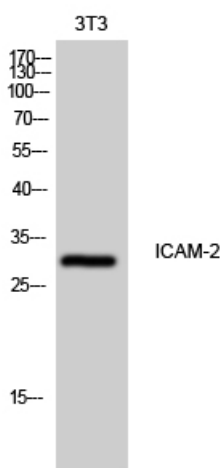
matters needing attention

Avoid repeated freezing and thawing!

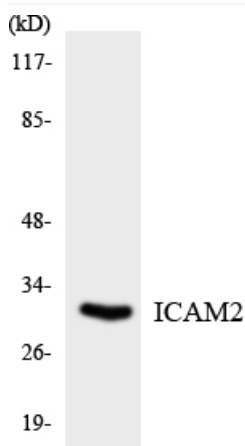
Usage suggestions

This product can be used in immunological reaction related experiments. For more information, please consult technical personnel.

Products Images



Western Blot analysis of 3T3 cells using ICAM-2 Polyclonal Antibody



Western blot analysis of the lysates from HT-29 cells using ICAM2 antibody.