



Endomucin Polyclonal Antibody

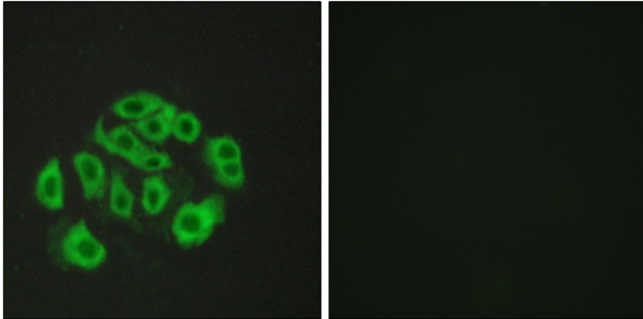
Catalog No	BYab-17018
Isotype	IgG
Reactivity	Human;Mouse;Rat
Applications	IF;ELISA
Gene Name	EMCN
Protein Name	Endomucin
Immunogen	The antiserum was produced against synthesized peptide derived from human Mucin-14. AA range:201-250
Specificity	Endomucin Polyclonal Antibody detects endogenous levels of Endomucin protein.
Formulation	Liquid in PBS containing 50% glycerol, 0.5% BSA and 0.02% sodium azide.
Source	Polyclonal, Rabbit,IgG
Purification	The antibody was affinity-purified from rabbit antiserum by affinity-chromatography using epitope-specific immunogen.
Dilution	Immunofluorescence: 1/200 - 1/1000. ELISA: 1/5000. Not yet tested in other applications.
Concentration	1 mg/ml
Purity	≥90%
Storage Stability	-20°C/1 year
Synonyms	EMCN; EMCN2; MUC14; Endomucin; Endomucin-2; Gastric cancer antigen Ga34; Mucin-14; MUC-14
Observed Band	
Cell Pathway	[Isoform 1]: Cell membrane; Single-pass type I membrane protein. Membrane; Single-pass type I membrane protein. Consistently localized to the plasma membrane and less abundantly to Golgi-like perinuclear stacks.; [Isoform 2]: Secreted .
Tissue Specificity	Expressed in heart, kidney and lung.
Function	function:Endothelial sialomucin, also called endomucin or mucin-like sialoglycoprotein, which interferes with the assembly of focal adhesion complexes and inhibits interaction between cells and the extracellular matrix.;PTM:Highly O-glycosylated. Sialic acid-rich glycoprotein.;subcellular location:Consistently localized to the plasma membrane and less abundantly to Golgi-like perinuclear stacks.;tissue specificity:Expressed in heart, kidney and lung.,

Nanjing BYabscience technology Co.,Ltd



Background	endomucin(EMCN) Homo sapiens EMCN is a mucin-like sialoglycoprotein that interferes with the assembly of focal adhesion complexes and inhibits interaction between cells and the extracellular matrix (Kinoshita et al., 2001 [PubMed 11418125]).[supplied by OMIM, Mar 2008],
matters needing attention	Avoid repeated freezing and thawing!
Usage suggestions	This product can be used in immunological reaction related experiments. For more information, please consult technical personnel.

Products Images



Immunofluorescence analysis of HepG2 cells, using Mucin-14 Antibody. The picture on the right is blocked with the synthesized peptide.