



Contactin 2 Polyclonal Antibody

Catalog No	BYab-17010
Isotype	IgG
Reactivity	Human;Mouse;Rat
Applications	WB;ELISA
Gene Name	CNTN2
Protein Name	Contactin-2
Immunogen	The antiserum was produced against synthesized peptide derived from human CNTN2. AA range:111-160
Specificity	Contactin 2 Polyclonal Antibody detects endogenous levels of Contactin 2 protein.
Formulation	Liquid in PBS containing 50% glycerol, 0.5% BSA and 0.02% sodium azide.
Source	Polyclonal, Rabbit,IgG
Purification	The antibody was affinity-purified from rabbit antiserum by affinity-chromatography using epitope-specific immunogen.
Dilution	Western Blot: 1/500 - 1/2000. ELISA: 1/40000. Not yet tested in other applications.
Concentration	1 mg/ml
Purity	≥90%
Storage Stability	-20°C/1 year
Synonyms	CNTN2; AXT; TAG1; TAX1; Contactin-2; Axonal glycoprotein TAG-1; Axonin-1; Transient axonal glycoprotein 1; TAX-1
Observed Band	120kD
Cell Pathway	Cell membrane; Lipid-anchor, GPI-anchor. Attached to the neuronal membrane by a GPI-anchor and is also released from neurons.
Tissue Specificity	Amygdala,Brain,Placenta,Plasma,
Function	function:May play a role in the initial growth and guidance of axons. May be involved in cell adhesion.,similarity:Belongs to the immunoglobulin superfamily. Contactin family.,similarity:Contains 4 fibronectin type-III domains.,similarity:Contains 6 Ig-like C2-type (immunoglobulin-like) domains.,subcellular location:Attached to the neuronal membrane by a GPI-anchor and is also released from neurons.,
Background	This gene encodes a member of the contactin family of proteins, part of the immunoglobulin superfamily of cell adhesion molecules. The encoded glycosylphosphatidylinositol (GPI)-anchored neuronal membrane protein plays a

Nanjing BYabscience technology Co.,Ltd



role in the proliferation, migration, and axon guidance of neurons of the developing cerebellum. A mutation in this gene may be associated with adult myoclonic epilepsy. [provided by RefSeq, Sep 2016],

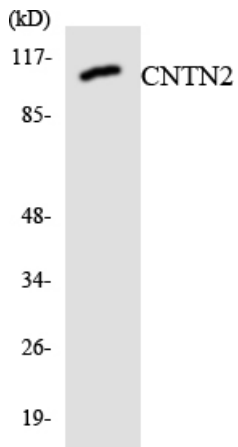
matters needing attention

Avoid repeated freezing and thawing!

Usage suggestions

This product can be used in immunological reaction related experiments. For more information, please consult technical personnel.

Products Images



Western blot analysis of the lysates from HUVEC cells using CNTN2 antibody.