



Connexin 47 Polyclonal Antibody

Catalog No	BYab-17006
Isotype	IgG
Reactivity	Human;Rat;Mouse;
Applications	WB;IF;ELISA
Gene Name	GJC2
Protein Name	Gap junction gamma-2 protein
Immunogen	The antiserum was produced against synthesized peptide derived from human CXG2. AA range:21-70
Specificity	Connexin 47 Polyclonal Antibody detects endogenous levels of Connexin 47 protein.
Formulation	Liquid in PBS containing 50% glycerol, 0.5% BSA and 0.02% sodium azide.
Source	Polyclonal, Rabbit,IgG
Purification	The antibody was affinity-purified from rabbit antiserum by affinity-chromatography using epitope-specific immunogen.
Dilution	Western Blot: 1/500 - 1/2000. Immunofluorescence: 1/200 - 1/1000. ELISA: 1/10000. Not yet tested in other applications.
Concentration	1 mg/ml
Purity	≥90%
Storage Stability	-20°C/1 year
Synonyms	GJC2; GJA12; Gap junction gamma-2 protein; Connexin-46.6; Cx46.6; Connexin-47; Cx47; Gap junction alpha-12 protein
Observed Band	47kD
Cell Pathway	Cell membrane; Multi-pass membrane protein. Cell junction, gap junction.
Tissue Specificity	Expressed in central nervous system, in sciatic nerve and sural nerve. Also detected in skeletal muscles.
Function	caution:It is uncertain whether Met-1 or Met-4 is the initiator.,disease:Defects in GJC2 are the cause of Leukodystrophy hypomyelinating type 2 (HLD2) [MIM:608804]; also known as Pelizaeus-Merzbacher-like disease autosomal recessive type 1. HLD2 is an autosomal recessive hypomyelinating leukodystrophy characterized by nystagmus, impaired motor development, ataxia, choreoathetotic movements, dysarthria and progressive spasticity.,function:One gap junction consists of a cluster of closely packed pairs of transmembrane channels, the connexons, through which materials of low MW diffuse from one cell to a neighboring cell. May play a role in myelination in central and peripheral nervous systems.,similarity:Belongs to the connexin family. Gamma-type

Nanjing BYabscience technology Co.,Ltd



subfamily.,subunit:A connexon is composed of a hexamer of connexins. Interacts with TJP1.,tissue specificity:Expressed in central nervous system,

Background

This gene encodes a gap junction protein. Gap junction proteins are members of a large family of homologous connexins and comprise 4 transmembrane, 2 extracellular, and 3 cytoplasmic domains. This gene plays a key role in central myelination and is involved in peripheral myelination in humans. Defects in this gene are the cause of autosomal recessive Pelizaeus-Merzbacher-like disease-1. [provided by RefSeq, Jul 2008],

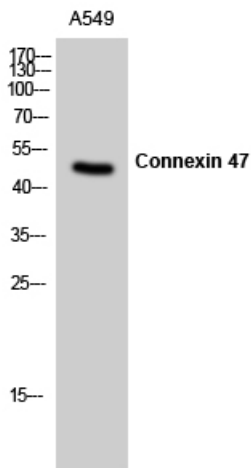
matters needing attention

Avoid repeated freezing and thawing!

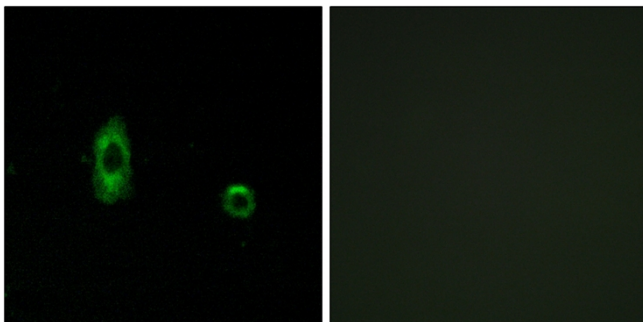
Usage suggestions

This product can be used in immunological reaction related experiments. For more information, please consult technical personnel.

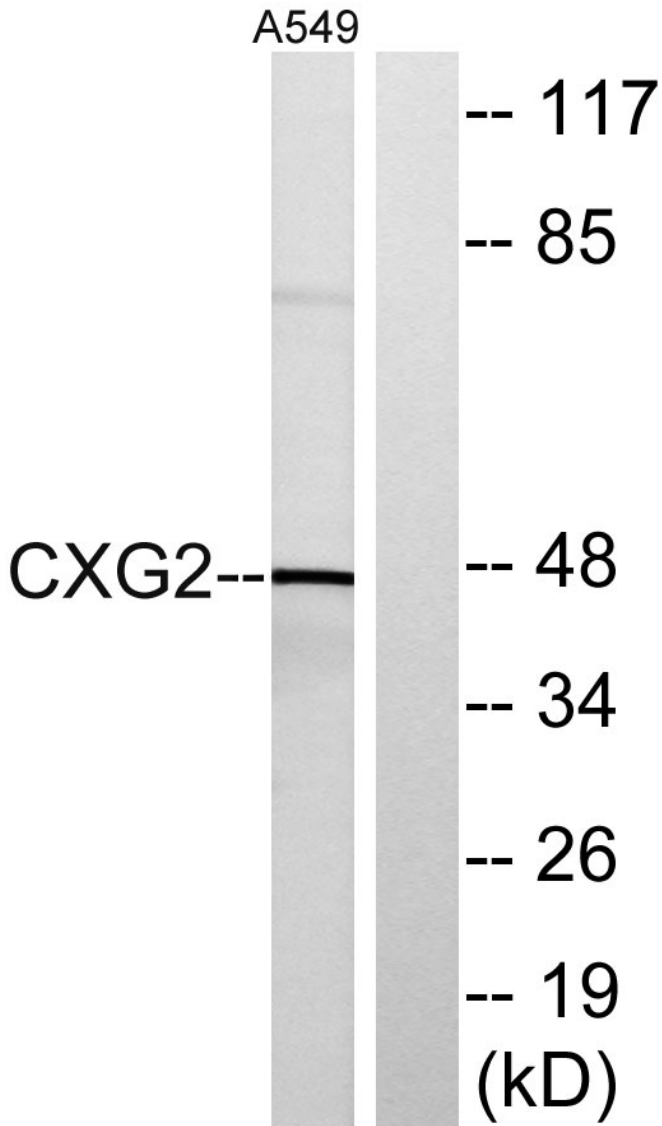
Products Images



Western Blot analysis of A549 cells using Connexin 47 Polyclonal Antibody



Immunofluorescence analysis of A549 cells, using CXG2 Antibody. The picture on the right is blocked with the synthesized peptide.



Western blot analysis of lysates from A549 cells, using CXG2 Antibody. The lane on the right is blocked with the synthesized peptide.