



Connexin 46 Polyclonal Antibody

Catalog No	BYab-17005
Isotype	IgG
Reactivity	Human;Mouse;Rat
Applications	IHC;IF;ELISA
Gene Name	GJA3
Protein Name	Gap junction alpha-3 protein
Immunogen	The antiserum was produced against synthesized peptide derived from human GJA3. AA range:151-200
Specificity	Connexin 46 Polyclonal Antibody detects endogenous levels of Connexin 46 protein.
Formulation	Liquid in PBS containing 50% glycerol, 0.5% BSA and 0.02% sodium azide.
Source	Polyclonal, Rabbit,IgG
Purification	The antibody was affinity-purified from rabbit antiserum by affinity-chromatography using epitope-specific immunogen.
Dilution	IHC-p 1:100-500;IF/ICC 1:100-500;ELISA 1:5000-20000
Concentration	1 mg/ml
Purity	≥90%
Storage Stability	-20°C/1 year
Synonyms	GJA3; Gap junction alpha-3 protein; Connexin-46; Cx46
Observed Band	
Cell Pathway	Cell membrane ; Multi-pass membrane protein . Cell junction, gap junction .
Tissue Specificity	Lens fibers,
Function	disease:Defects in GJA3 are the cause of zonular pulverulent cataract type 3 (CZP3) [MIM:601885]. CZP3 is a form of autosomal dominant congenital cataract.,function:One gap junction consists of a cluster of closely packed pairs of transmembrane channels, the connexons, through which materials of low MW diffuse from one cell to a neighboring cell.,similarity:Belongs to the connexin family. Alpha-type (group II) subfamily.,subunit:A connexon is composed of a hexamer of connexins. This particular connexin is a component of lens fiber gap junctions, can form both junctional and non-junctional ("hemi-") channels.,
Background	The protein encoded by this gene is a connexin and is a component of lens fiber gap junctions. Defects in this gene are a cause of zonular pulverulent cataract

Nanjing BYabscience technology Co.,Ltd



type 3 (CZP3). [provided by RefSeq, Jan 2010],

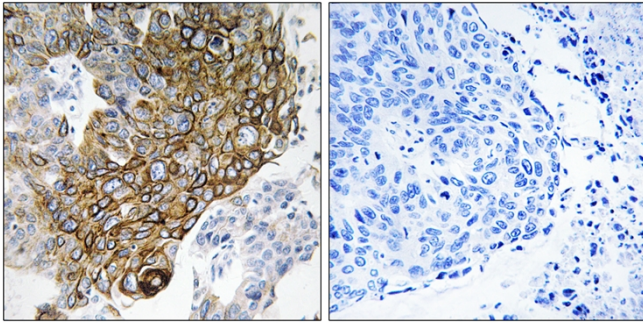
matters needing attention

Avoid repeated freezing and thawing!

Usage suggestions

This product can be used in immunological reaction related experiments. For more information, please consult technical personnel.

Products Images



Immunohistochemistry analysis of paraffin-embedded human lung carcinoma tissue, using GJA3 Antibody. The picture on the right is blocked with the synthesized peptide.