



# Connexin 31.3 Polyclonal Antibody

<b>Catalog No</b>	BYab-17000
<b>Isotype</b>	IgG
<b>Reactivity</b>	Human;Rat;Mouse;
<b>Applications</b>	WB;ELISA
<b>Gene Name</b>	GJC3
<b>Protein Name</b>	Gap junction gamma-3 protein
<b>Immunogen</b>	The antiserum was produced against synthesized peptide derived from human GJC3. AA range:151-200
<b>Specificity</b>	Connexin 31.3 Polyclonal Antibody detects endogenous levels of Connexin 31.3 protein.
<b>Formulation</b>	Liquid in PBS containing 50% glycerol, 0.5% BSA and 0.02% sodium azide.
<b>Source</b>	Polyclonal, Rabbit,IgG
<b>Purification</b>	The antibody was affinity-purified from rabbit antiserum by affinity-chromatography using epitope-specific immunogen.
<b>Dilution</b>	Western Blot: 1/500 - 1/2000. ELISA: 1/40000. Not yet tested in other applications.
<b>Concentration</b>	1 mg/ml
<b>Purity</b>	≥90%
<b>Storage Stability</b>	-20°C/1 year
<b>Synonyms</b>	GJC3; GJE1; Gap junction gamma-3 protein; Connexin-30.2; Cx30.2; Connexin-31.3; Cx31.3; Gap junction epsilon-1 protein
<b>Observed Band</b>	28kD
<b>Cell Pathway</b>	Cell membrane ; Multi-pass membrane protein . Cell junction, gap junction .
<b>Tissue Specificity</b>	CNS specific. Expression is restricted to brain, spinal cord, and sciatic nerve. According to PubMed:12881038, expression is abundant in skeletal muscle, liver, and heart, and to a minor degree in pancreas and kidney.
<b>Function</b>	function:One gap junction consists of a cluster of closely packed pairs of transmembrane channels, the connexons, through which materials of low MW diffuse from one cell to a neighboring cell.,similarity:Belongs to the connexin family. Gamma-type subfamily.,subunit:A connexon is composed of a hexamer of connexins.,tissue specificity:CNS specific. Expression is restricted to brain, spinal cord, and sciatic nerve. According to PubMed:12881038 expression is abundant in skeletal muscle, liver, and heart, and to a minor degree in pancreas and kidney.,

Nanjing BYabscience technology Co.,Ltd



**Background**

This gene encodes a gap junction protein. The encoded protein, also known as a connexin, plays a role in formation of gap junctions, which provide direct connections between neighboring cells. Mutations in this gene have been reported to be associated with nonsyndromic hearing loss.[provided by RefSeq, Feb 2010],

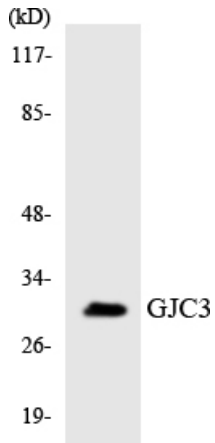
**matters needing attention**

Avoid repeated freezing and thawing!

**Usage suggestions**

This product can be used in immunological reaction related experiments. For more information, please consult technical personnel.

**Products Images**



Western blot analysis of the lysates from K562 cells using GJC3 antibody.