



COL5A2 Polyclonal Antibody

Catalog No	BYab-16991
Isotype	IgG
Reactivity	Human;Rat;Mouse;
Applications	IHC;IF;ELISA
Gene Name	COL5A2
Protein Name	Collagen alpha-2(V) chain
Immunogen	The antiserum was produced against synthesized peptide derived from human Collagen V alpha2. AA range:1-50
Specificity	COL5A2 Polyclonal Antibody detects endogenous levels of COL5A2 protein.
Formulation	Liquid in PBS containing 50% glycerol, 0.5% BSA and 0.02% sodium azide.
Source	Polyclonal, Rabbit,IgG
Purification	The antibody was affinity-purified from rabbit antiserum by affinity-chromatography using epitope-specific immunogen.
Dilution	Immunohistochemistry: 1/100 - 1/300. Immunofluorescence: 1/200 - 1/1000. ELISA: 1/40000. Not yet tested in other applications.
Concentration	1 mg/ml
Purity	≥90%
Storage Stability	-20°C/1 year
Synonyms	COL5A2; Collagen alpha-2(V) chain
Observed Band	
Cell Pathway	Secreted, extracellular space, extracellular matrix .
Tissue Specificity	Bone,Brain,Chondrosarcoma,Placenta,Skin,
Function	disease:Defects in COL5A2 are a cause of Ehlers-Danlos syndrome type 1 (EDS1) [MIM:130000]; also known as Ehlers-Danlos syndrome gravis or severe classic type Ehlers-Danlos syndrome. EDS is a connective tissue disorder characterized by hyperextensible skin, atrophic cutaneous scars due to tissue fragility and joint hyperlaxity. EDS1 is the severe form of classic Ehlers-Danlos syndrome.,disease:Defects in COL5A2 are a cause of Ehlers-Danlos syndrome type 2 (EDS2) [MIM:130010]; also known as Ehlers-Danlos syndrome mitis or mild classic type Ehlers Danlos syndrome.,disease:Genetic variation in COL5A2 is associated with spontaneous cervical artery dissections (sCAD). sCAD are an important cause of stroke among young and middle-aged patients. Ultrastructural abnormalities are observed in skin biopsies of most patients with sCAD. Major

Nanjing BYabscience technology Co.,Ltd



findings included enlarged and irregular collagen fibrils

Background

This gene encodes an alpha chain for one of the low abundance fibrillar collagens. Fibrillar collagen molecules are trimers that can be composed of one or more types of alpha chains. Type V collagen is found in tissues containing type I collagen and appears to regulate the assembly of heterotypic fibers composed of both type I and type V collagen. This gene product is closely related to type XI collagen and it is possible that the collagen chains of types V and XI constitute a single collagen type with tissue-specific chain combinations. Mutations in this gene are associated with Ehlers-Danlos syndrome, types I and II. [provided by RefSeq, Jul 2008],

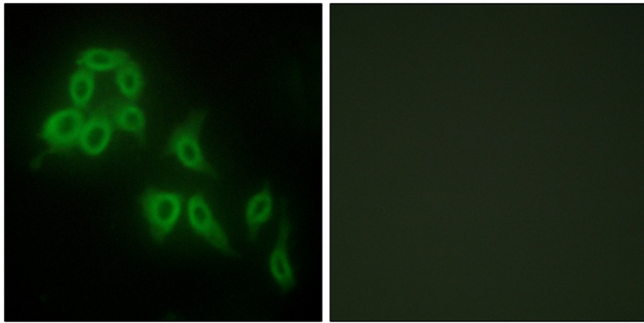
matters needing attention

Avoid repeated freezing and thawing!

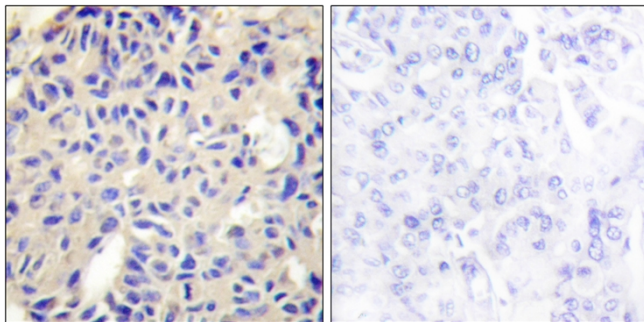
Usage suggestions

This product can be used in immunological reaction related experiments. For more information, please consult technical personnel.

Products Images



Immunofluorescence analysis of HepG2 cells, using Collagen V alpha2 Antibody. The picture on the right is blocked with the synthesized peptide.



Immunohistochemistry analysis of paraffin-embedded human breast carcinoma tissue, using Collagen V alpha2 Antibody. The picture on the right is blocked with the synthesized peptide.

Nanjing BYabscience technology Co.,Ltd