



COL23A1 Polyclonal Antibody

Catalog No	BYab-16979
Isotype	IgG
Reactivity	Human;Mouse;Rat
Applications	IF;ELISA
Gene Name	COL23A1
Protein Name	Collagen alpha-1(XXIII) chain
Immunogen	The antiserum was produced against synthesized peptide derived from human Collagen XXIII alpha1. AA range:461-510
Specificity	COL23A1 Polyclonal Antibody detects endogenous levels of COL23A1 protein.
Formulation	Liquid in PBS containing 50% glycerol, 0.5% BSA and 0.02% sodium azide.
Source	Polyclonal, Rabbit,IgG
Purification	The antibody was affinity-purified from rabbit antiserum by affinity-chromatography using epitope-specific immunogen.
Dilution	Immunofluorescence: 1/200 - 1/1000. ELISA: 1/10000. Not yet tested in other applications.
Concentration	1 mg/ml
Purity	≥90%
Storage Stability	-20°C/1 year
Synonyms	COL23A1; Collagen alpha-1(XXIII) chain
Observed Band	
Cell Pathway	Cell membrane ; Single-pass type II membrane protein ; Extracellular side .
Tissue Specificity	Brain,Placenta,Testis,
Function	PTM:Undergoes proteolytic cleavage by furin protease to yield a 60 kDa soluble form that forms an homotrimer and exhibits a low affinity interaction with heparin.,similarity:Contains 5 collagen-like domains.,subunit:Homotrimer.,
Background	COL23A1 is a member of the transmembrane collagens, a subfamily of the nonfibrillar collagens that contain a single pass hydrophobic transmembrane domain (Banyard et al., 2003 [PubMed 12644459]).[supplied by OMIM, Mar 2008],
matters needing attention	Avoid repeated freezing and thawing!

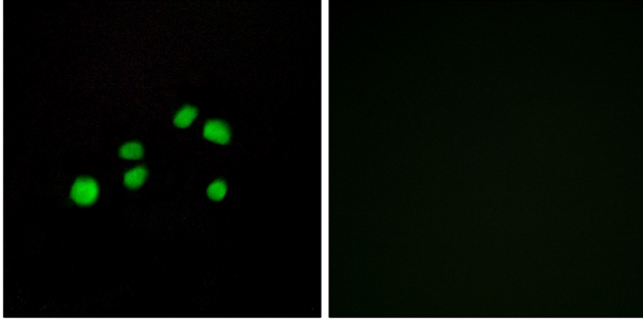
Nanjing BYabscience technology Co.,Ltd



Usage suggestions

This product can be used in immunological reaction related experiments. For more information, please consult technical personnel.

Products Images



Immunofluorescence analysis of HepG2 cells, using Collagen XXIII alpha1 Antibody. The picture on the right is blocked with the synthesized peptide.