



COL18A1 Polyclonal Antibody

Catalog No	BYab-16974
Isotype	IgG
Reactivity	Human;Mouse
Applications	IHC;IF;ELISA
Gene Name	COL18A1
Protein Name	Collagen alpha-1(XVIII) chain
Immunogen	The antiserum was produced against synthesized peptide derived from human Collagen alpha1 XVIII. AA range:1301-1350
Specificity	COL18A1 Polyclonal Antibody detects endogenous levels of COL18A1 protein.
Formulation	Liquid in PBS containing 50% glycerol, 0.5% BSA and 0.02% sodium azide.
Source	Polyclonal, Rabbit,IgG
Purification	The antibody was affinity-purified from rabbit antiserum by affinity-chromatography using epitope-specific immunogen.
Dilution	IHC: 1/100 - 1/300. ELISA: 1/20000.. IF 1:50-200
Concentration	1 mg/ml
Purity	≥90%
Storage Stability	-20°C/1 year
Synonyms	COL18A1; Collagen alpha-1(XVIII) chain
Observed Band	
Cell Pathway	Secreted, extracellular space, extracellular matrix . Secreted, extracellular space, extracellular matrix, basement membrane .; [Non-collagenous domain 1]: Secreted, extracellular space, extracellular matrix, basement membrane . Secreted .; [Endostatin]: Secreted . Secreted, extracellular space, extracellular matrix, basement membrane .
Tissue Specificity	Present in multiple organs with highest levels in liver, lung and kidney.
Function	disease:Defects in COL18A1 are a cause of Knobloch syndrome (KNO) [MIM:267750]. KNO is an autosomal recessive disorder defined by the occurrence of high myopia, vitreoretinal degeneration with retinal detachment, macular abnormalities and occipital encephalocele.,function:COLA18A probably plays a major role in determining the retinal structure as well as in the closure of the neural tube.,function:Endostatin potently inhibits endothelial cell proliferation and angiogenesis. May inhibit angiogenesis by binding to the heparan sulfate proteoglycans involved in growth factor signaling.,polymorphism:There is an

Nanjing BYabscience technology Co.,Ltd



association between a polymorphism in position 1675 and prostate cancer. Heterozygous Asn-1675 individuals have a 2.5 times increased chance of developing prostate cancer as compared with homozygous Asp-1675 individuals.,PTM:Prolines at the third position of the tripeptide repeating un

Background

This gene encodes the alpha chain of type XVIII collagen. This collagen is one of the multiplexins, extracellular matrix proteins that contain multiple triple-helix domains (collagenous domains) interrupted by non-collagenous domains. A long isoform of the protein has an N-terminal domain that is homologous to the extracellular part of frizzled receptors. Proteolytic processing at several endogenous cleavage sites in the C-terminal domain results in production of endostatin, a potent antiangiogenic protein that is able to inhibit angiogenesis and tumor growth. Mutations in this gene are associated with Knobloch syndrome. The main features of this syndrome involve retinal abnormalities, so type XVIII collagen may play an important role in retinal structure and in neural tube closure. Alternative splicing results in multiple transcript variants. [provided by RefSeq, Dec 2014],

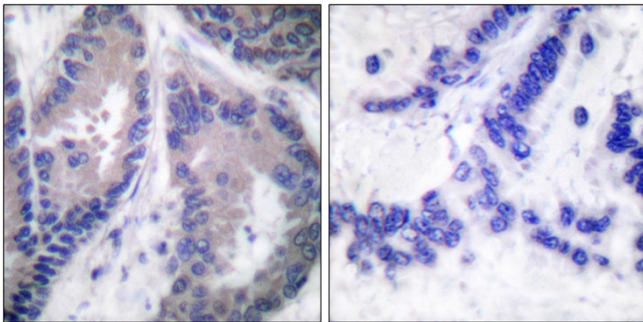
matters needing attention

Avoid repeated freezing and thawing!

Usage suggestions

This product can be used in immunological reaction related experiments. For more information, please consult technical personnel.

Products Images



Immunohistochemistry analysis of paraffin-embedded human lung carcinoma tissue, using Collagen alpha1 XVIII Antibody. The picture on the right is blocked with the synthesized peptide.