



CLP36 Polyclonal Antibody

Catalog No	BYab-16966
Isotype	IgG
Reactivity	Human;Mouse;Rat
Applications	WB;IHC;IF;ELISA
Gene Name	PDLIM1
Protein Name	PDZ and LIM domain protein 1
Immunogen	The antiserum was produced against synthesized peptide derived from human PDLIM1. AA range:61-110
Specificity	CLP36 Polyclonal Antibody detects endogenous levels of CLP36 protein.
Formulation	Liquid in PBS containing 50% glycerol, 0.5% BSA and 0.02% sodium azide.
Source	Polyclonal, Rabbit,IgG
Purification	The antibody was affinity-purified from rabbit antiserum by affinity-chromatography using epitope-specific immunogen.
Dilution	Western Blot: 1/500 - 1/2000. Immunohistochemistry: 1/100 - 1/300. Immunofluorescence: 1/200 - 1/1000. ELISA: 1/5000. Not yet tested in other applications.
Concentration	1 mg/ml
Purity	≥90%
Storage Stability	-20°C/1 year
Synonyms	PDLIM1; CLIM1; CLP36; PDZ and LIM domain protein 1; C-terminal LIM domain protein 1; Elfin; LIM domain protein CLP-36
Observed Band	36kD
Cell Pathway	Cytoplasm . Cytoplasm, cytoskeleton . Cytoplasm, myofibril, sarcomere, Z line . Associates with actin stress fibers. .
Tissue Specificity	Strongly expressed in the heart and skeletal muscle, moderately expressed in the spleen, small intestine, colon, placenta, and lung. A lower level expression is seen in liver, thymus, kidney, prostate and pancreas and is not found in the brain, testis, ovary, and peripheral blood leukocytes.
Function	function:Cytoskeletal protein that may act as an adapter that brings other proteins (like kinases) to the cytoskeleton.,similarity:Contains 1 LIM zinc-binding domain.,similarity:Contains 1 PDZ (DHR) domain.,subcellular location:Associates with the actin stress fibers.,subunit:Interacts with alpha-actinins 1, 2 and 4.,tissue specificity:Strongly expressed in the heart and skeletal muscle, moderately expressed in the spleen, small intestine, colon, placenta, and lung. A lower level expression is seen in liver, thymus, kidney, prostate and pancreas and is not

Nanjing BYabscience technology Co.,Ltd



found in the brain, testis, ovary, and peripheral blood leukocytes.,

Background

This gene encodes a member of the enigma protein family. The protein contains two protein interacting domains, a PDZ domain at the amino terminal end and one to three LIM domains at the carboxyl terminal. It is a cytoplasmic protein associated with the cytoskeleton. The protein may function as an adapter to bring other LIM-interacting proteins to the cytoskeleton. Pseudogenes associated with this gene are located on chromosomes 3, 14 and 17. [provided by RefSeq, Oct 2012],

matters needing attention

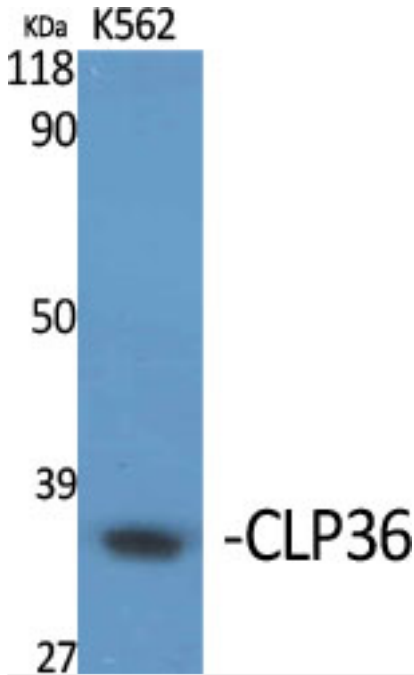
Avoid repeated freezing and thawing!

Usage suggestions

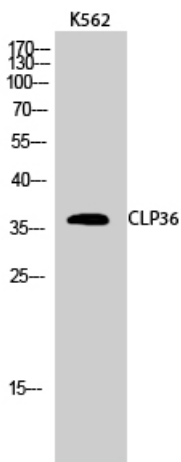
This product can be used in immunological reaction related experiments. For more information, please consult technical personnel.



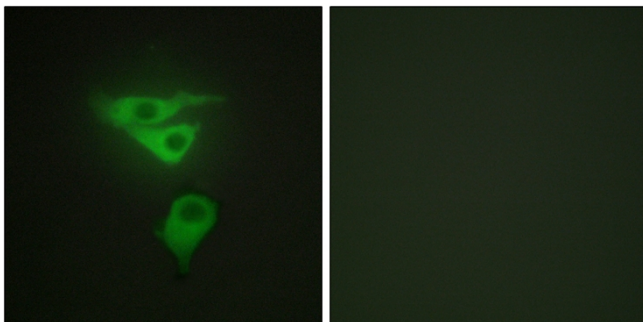
Products Images



Western Blot analysis of various cells using CLP36 Polyclonal Antibody diluted at 1:1000



Western Blot analysis of K562 cells using CLP36 Polyclonal Antibody diluted at 1:1000



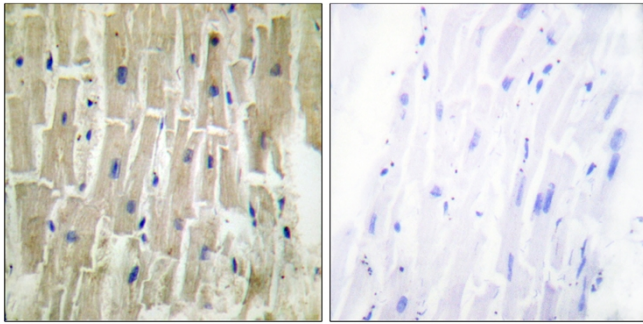
Immunofluorescence analysis of HepG2 cells, using PDLIM1 Antibody. The picture on the right is blocked with the synthesized peptide.

Nanjing BYabscience technology Co.,Ltd

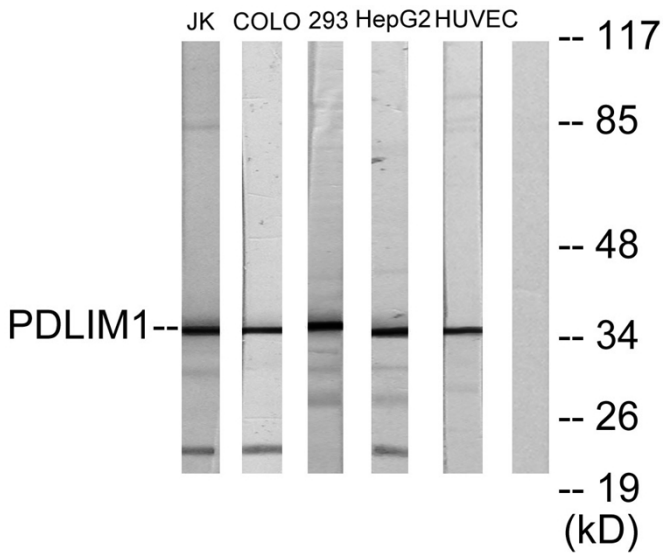
网址: www.njbybio.com

官方热线: 025-5229-8998

监督电话: 15950492658



Immunohistochemistry analysis of paraffin-embedded human heart tissue, using PDLIM1 Antibody. The picture on the right is blocked with the synthesized peptide.



Western blot analysis of lysates from Jurkat, COLO205, 293, HepG2, and HUVEC cells, using PDLIM1 Antibody. The lane on the right is blocked with the synthesized peptide.