



Cadherin-7 Polyclonal Antibody

Catalog No	BYab-16935
Isotype	IgG
Reactivity	Human;Mouse;Rat
Applications	WB;IHC;IF;ELISA
Gene Name	CDH7
Protein Name	Cadherin-7
Immunogen	The antiserum was produced against synthesized peptide derived from human CDH7. AA range:651-700
Specificity	Cadherin-7 Polyclonal Antibody detects endogenous levels of Cadherin-7 protein.
Formulation	Liquid in PBS containing 50% glycerol, 0.5% BSA and 0.02% sodium azide.
Source	Polyclonal, Rabbit,IgG
Purification	The antibody was affinity-purified from rabbit antiserum by affinity-chromatography using epitope-specific immunogen.
Dilution	Western Blot: 1/500 - 1/2000. Immunohistochemistry: 1/100 - 1/300. Immunofluorescence: 1/200 - 1/1000. ELISA: 1/20000. Not yet tested in other applications.
Concentration	1 mg/ml
Purity	≥90%
Storage Stability	-20°C/1 year
Synonyms	CDH7; CDH7L1; Cadherin-7
Observed Band	87kD
Cell Pathway	Cell membrane; Single-pass type I membrane protein.
Tissue Specificity	Brain,
Function	function:Cadherins are calcium dependent cell adhesion proteins. They preferentially interact with themselves in a homophilic manner in connecting cells; cadherins may thus contribute to the sorting of heterogeneous cell types.,similarity:Contains 5 cadherin domains.,
Background	This gene encodes a type II classical cadherin of the cadherin superfamily. Alternative splicing results in multiple transcript variants, at least one of which encodes a preproprotein that is proteolytically processed to generate the mature glycoprotein. This calcium dependent cell-cell adhesion molecule is comprised of five extracellular cadherin repeats, a transmembrane region and a highly

Nanjing BYabscience technology Co.,Ltd



conserved cytoplasmic tail. Type II (atypical) cadherins are defined based on their lack of a histidine-alanine-valine (HAV) cell adhesion recognition sequence specific to type I cadherins. Cadherins mediate cell-cell binding in a homophilic manner, contributing to the sorting of heterogeneous cell types. Mutations in this gene may be associated with bipolar disease in human patients. This gene is present in a gene cluster on chromosome 18. [provided by RefSeq, May 2016],

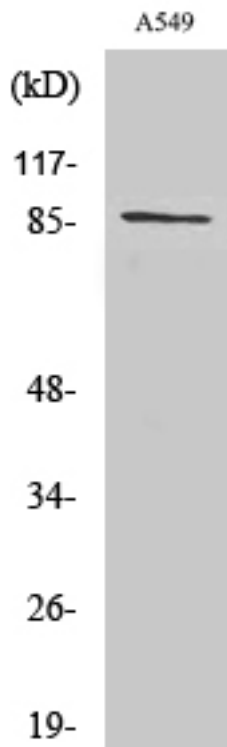
matters needing attention

Avoid repeated freezing and thawing!

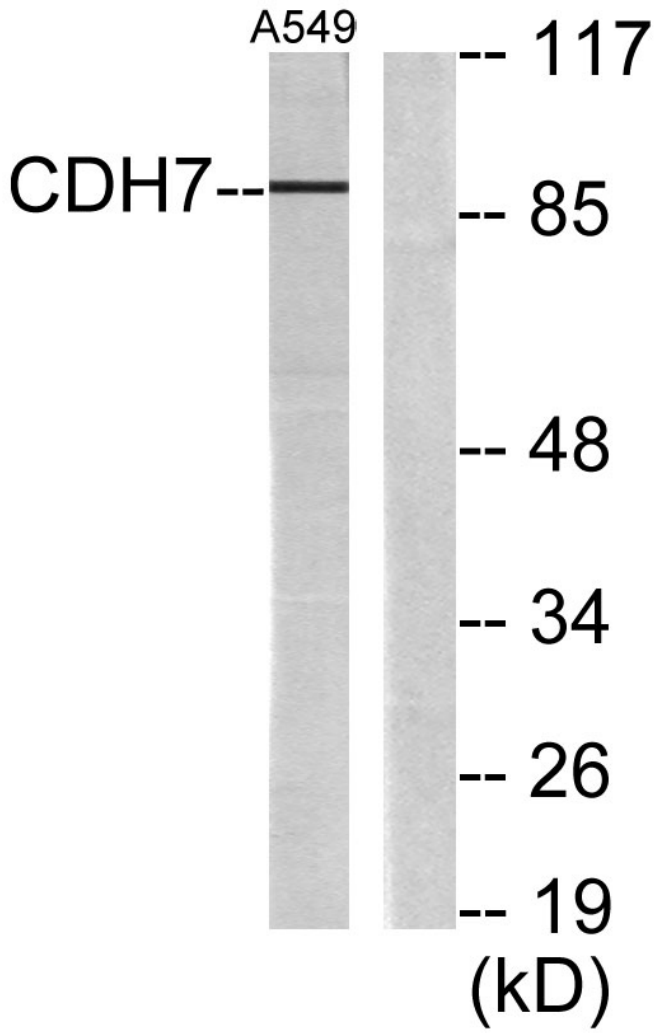
Usage suggestions

This product can be used in immunological reaction related experiments. For more information, please consult technical personnel.

Products Images



Western Blot analysis of various cells using Cadherin-7 Polyclonal Antibody diluted at 1:1000



Western blot analysis of lysates from A549 cells, using CDH7 Antibody. The lane on the right is blocked with the synthesized peptide.