



# Cadherin-20 Polyclonal Antibody

<b>Catalog No</b>	BYab-16930
<b>Isotype</b>	IgG
<b>Reactivity</b>	Human;Mouse;Rat
<b>Applications</b>	IHC;IF;ELISA
<b>Gene Name</b>	CDH20
<b>Protein Name</b>	Cadherin-20
<b>Immunogen</b>	The antiserum was produced against synthesized peptide derived from human CDH20. AA range:111-160
<b>Specificity</b>	Cadherin-20 Polyclonal Antibody detects endogenous levels of Cadherin-20 protein.
<b>Formulation</b>	Liquid in PBS containing 50% glycerol, 0.5% BSA and 0.02% sodium azide.
<b>Source</b>	Polyclonal, Rabbit,IgG
<b>Purification</b>	The antibody was affinity-purified from rabbit antiserum by affinity-chromatography using epitope-specific immunogen.
<b>Dilution</b>	Immunohistochemistry: 1/100 - 1/300. Immunofluorescence: 1/200 - 1/1000. ELISA: 1/10000. Not yet tested in other applications.
<b>Concentration</b>	1 mg/ml
<b>Purity</b>	≥90%
<b>Storage Stability</b>	-20°C/1 year
<b>Synonyms</b>	CDH20; CDH7L3; Cadherin-20
<b>Observed Band</b>	
<b>Cell Pathway</b>	Cell membrane; Single-pass type I membrane protein.
<b>Tissue Specificity</b>	Expressed in placenta, adult brain, and fetal brain.
<b>Function</b>	function:Cadherins are calcium dependent cell adhesion proteins.,function:Cadherins are calcium dependent cell adhesion proteins. They preferentially interact with themselves in a homophilic manner in connecting cells; cadherins may thus contribute to the sorting of heterogeneous cell types.,similarity:Contains 5 cadherin domains.,tissue specificity:Expressed in placenta, adult brain, and fetal brain.,
<b>Background</b>	This gene is a type II classical cadherin from the cadherin superfamily and one of three cadherin 7-like genes located in a cluster on chromosome 18. The encoded membrane protein is a calcium dependent cell-cell adhesion glycoprotein comprised of five extracellular cadherin repeats, a transmembrane region and a

Nanjing BYabscience technology Co.,Ltd



highly conserved cytoplasmic tail. Type II (atypical) cadherins are defined based on their lack of a HAV cell adhesion recognition sequence specific to type I cadherins. Since disturbance of intracellular adhesion is a prerequisite for invasion and metastasis of tumor cells, cadherins are considered prime candidates for tumor suppressor genes. [provided by RefSeq, Jul 2008],

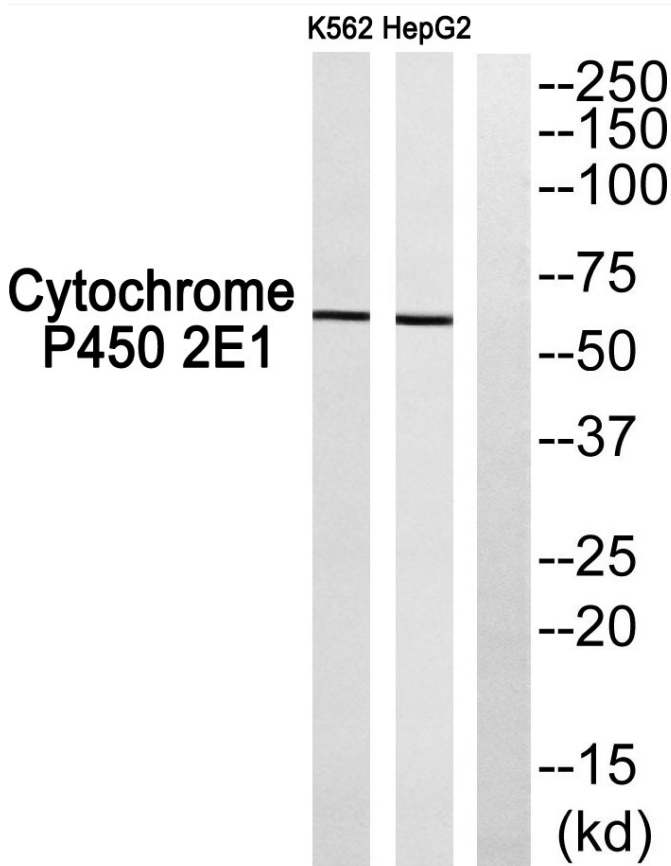
**matters needing attention**

Avoid repeated freezing and thawing!

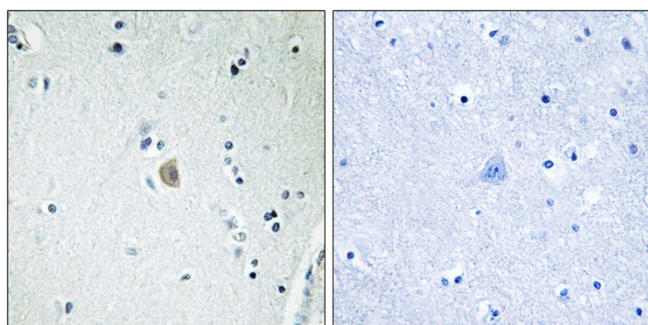
**Usage suggestions**

This product can be used in immunological reaction related experiments. For more information, please consult technical personnel.

**Products Images**

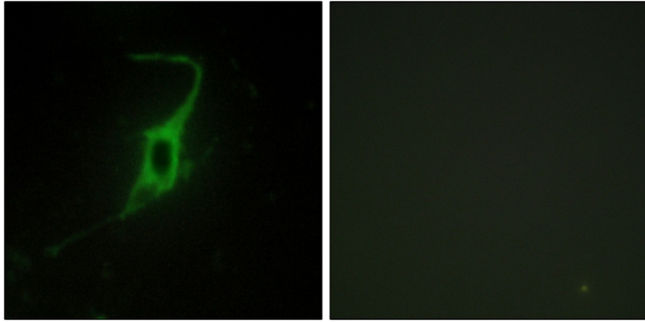


Western blot analysis of CDH20 Antibody. The lane on the right is blocked with the CDH20 peptide.

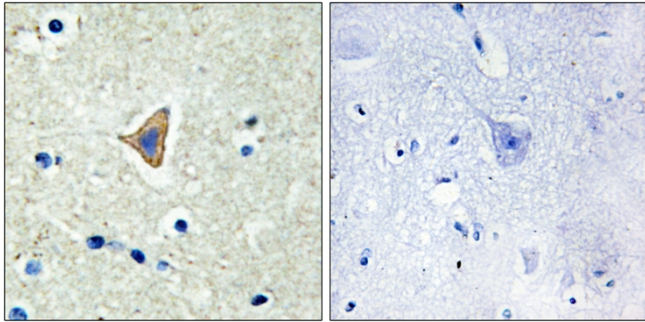


Immunohistochemistry analysis of paraffin-embedded human brain, using CDH20 Antibody. The lane on the right is blocked with the CDH20 peptide.

**Nanjing BYabscience technology Co.,Ltd**



Immunofluorescence analysis of NIH/3T3 cells, using CDH20 Antibody. The picture on the right is blocked with the synthesized peptide.



Immunohistochemistry analysis of paraffin-embedded human brain tissue, using CDH20 Antibody. The picture on the right is blocked with the synthesized peptide.