



DNAM-1 (phospho Ser329) Polyclonal Antibody

Catalog No	BYab-16902
Isotype	IgG
Reactivity	Human;Mouse;Monkey
Applications	WB;IHC;IF;ELISA
Gene Name	CD226
Protein Name	CD226 antigen
Immunogen	The antiserum was produced against synthesized peptide derived from human CD226/DNAM-1 around the phosphorylation site of Ser329. AA range:287-336
Specificity	Phospho-DNAM-1 (S329) Polyclonal Antibody detects endogenous levels of DNAM-1 protein only when phosphorylated at S329.
Formulation	Liquid in PBS containing 50% glycerol, 0.5% BSA and 0.02% sodium azide.
Source	Polyclonal, Rabbit,IgG
Purification	The antibody was affinity-purified from rabbit antiserum by affinity-chromatography using epitope-specific immunogen.
Dilution	Western Blot: 1/500 - 1/2000. Immunohistochemistry: 1/100 - 1/300. Immunofluorescence: 1/200 - 1/1000. ELISA: 1/40000. Not yet tested in other applications.
Concentration	1 mg/ml
Purity	≥90%
Storage Stability	-20°C/1 year
Synonyms	CD226; DNAM1; CD226 antigen; DNAX accessory molecule 1; DNAM-1; CD antigen CD226
Observed Band	60kD
Cell Pathway	Cell membrane ; Single-pass type I membrane protein .
Tissue Specificity	Expressed by peripheral blood T-lymphocytes.
Function	function:Receptor involved in intercellular adhesion, lymphocyte signaling, cytotoxicity and lymphokine secretion mediated by cytotoxic T-lymphocyte (CTL) and NK cell.,PTM:Phosphorylated.,similarity:Contains 2 Ig-like C2-type (immunoglobulin-like) domains.,subunit:Interacts with PVR and PVRL2.,tissue specificity:Expressed by peripheral blood T-lymphocytes.,
Background	This gene encodes a glycoprotein expressed on the surface of NK cells, platelets, monocytes and a subset of T cells. It is a member of the Ig-superfamily containing 2 Ig-like domains of the V-set. The protein mediates cellular adhesion

Nanjing BYabscience technology Co.,Ltd



of platelets and megakaryocytic cells to vascular endothelial cells. The protein also plays a role in megakaryocytic cell maturation. Alternative splicing results in multiple transcript variants. [provided by RefSeq, Jan 2015],

matters needing attention

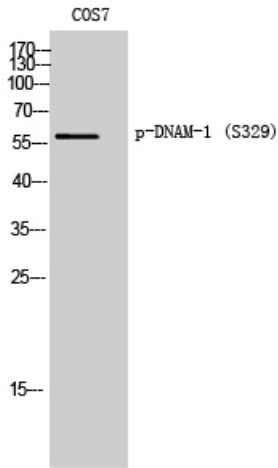
Avoid repeated freezing and thawing!

Usage suggestions

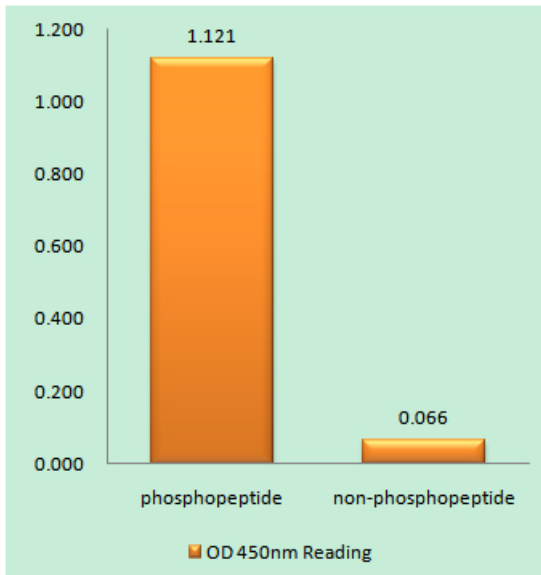
This product can be used in immunological reaction related experiments. For more information, please consult technical personnel.



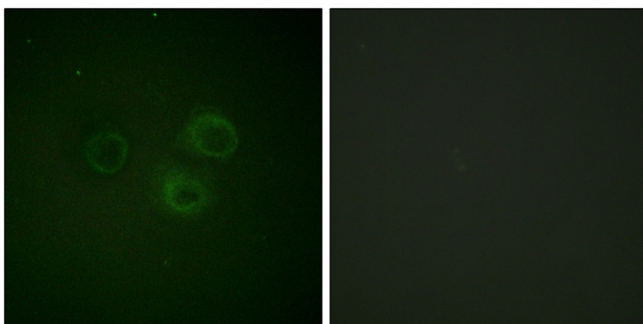
Products Images



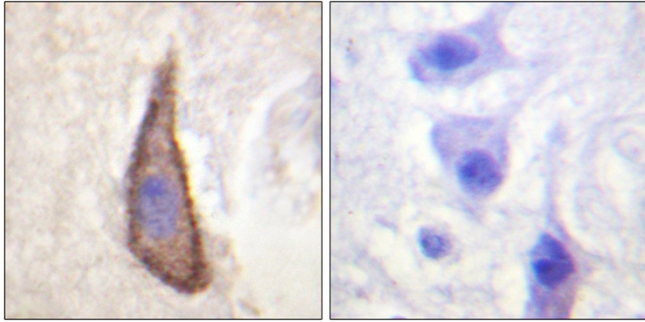
Western Blot analysis of COS7 cells using Phospho-DNAM-1 (S329) Polyclonal Antibody



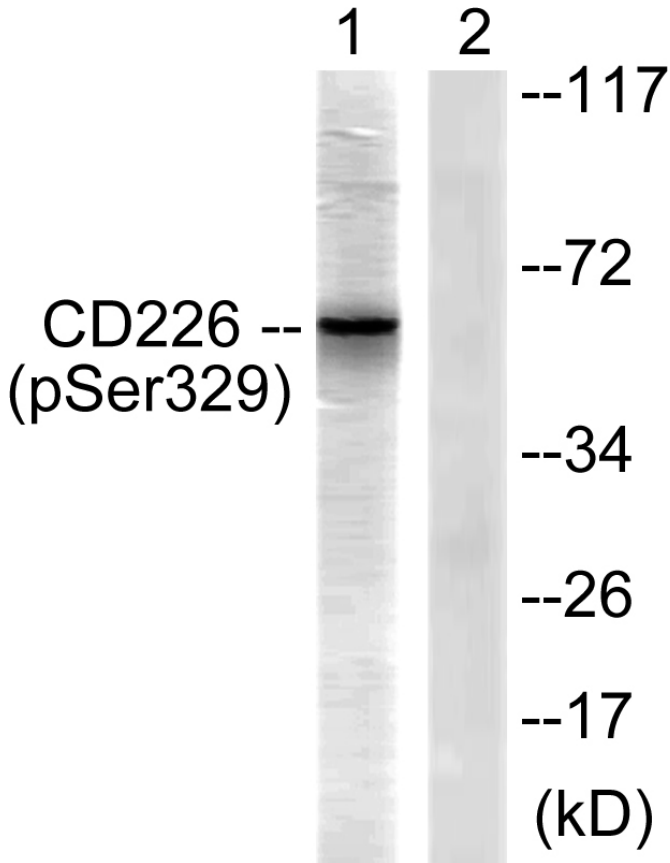
Enzyme-Linked Immunosorbent Assay (Phospho-ELISA) for Immunogen Phosphopeptide (Phospho-left) and Non-Phosphopeptide (Phospho-right), using CD226/DNAM-1 (Phospho-Ser329) Antibody



Immunofluorescence analysis of A549 cells, using CD226/DNAM-1 (Phospho-Ser329) Antibody. The picture on the right is blocked with the phosphopeptide.



Immunohistochemistry analysis of paraffin-embedded human brain, using CD226/DNAM-1 (Phospho-Ser329) Antibody. The picture on the right is blocked with the phospho peptide.



Western blot analysis of lysates from COS7 cells, using CD226/DNAM-1 (Phospho-Ser329) Antibody. The lane on the right is blocked with the phospho peptide.