



# VE-Cadherin (phospho Tyr731) Polyclonal Antibody

<b>Catalog No</b>	BYab-16900
<b>Isotype</b>	IgG
<b>Reactivity</b>	Human;Mouse
<b>Applications</b>	WB;IHC;IF;ELISA
<b>Gene Name</b>	CDH5
<b>Protein Name</b>	Cadherin-5
<b>Immunogen</b>	The antiserum was produced against synthesized peptide derived from human VE-Cadherin around the phosphorylation site of Tyr731. AA range:697-746
<b>Specificity</b>	Phospho-VE-Cadherin (Y731) Polyclonal Antibody detects endogenous levels of VE-Cadherin protein only when phosphorylated at Y731.
<b>Formulation</b>	Liquid in PBS containing 50% glycerol, 0.5% BSA and 0.02% sodium azide.
<b>Source</b>	Polyclonal, Rabbit,IgG
<b>Purification</b>	The antibody was affinity-purified from rabbit antiserum by affinity-chromatography using epitope-specific immunogen.
<b>Dilution</b>	WB: 1/500 - 1/2000. IHC: 1/100 - 1/300. ELISA: 1/20000.. IF 1:50-200
<b>Concentration</b>	1 mg/ml
<b>Purity</b>	≥90%
<b>Storage Stability</b>	-20°C/1 year
<b>Synonyms</b>	CDH5; Cadherin-5; 7B4 antigen; Vascular endothelial cadherin; VE-cadherin; CD antigen CD144
<b>Observed Band</b>	130kD
<b>Cell Pathway</b>	Cell junction . Cell membrane ; Single-pass type I membrane protein . Found at cell-cell boundaries and probably at cell-matrix boundaries. KRIT1 and CDH5 reciprocally regulate their localization to endothelial cell-cell junctions. .
<b>Tissue Specificity</b>	Endothelial tissues and brain.
<b>Function</b>	function:Cadherins are calcium dependent cell adhesion proteins.,function:Cadherins are calcium dependent cell adhesion proteins. They preferentially interact with themselves in a homophilic manner in connecting cells; cadherins may thus contribute to the sorting of heterogeneous cell types. This cadherin may play a important role in endothelial cell biology through control of the cohesion and organization of the intercellular junctions. It associates with alpha-catenin forming a link to the cytoskeleton.,similarity:Contains 5 cadherin domains.,subcellular location:Found at cell-cell boundaries and probably at cell-matrix boundaries.,tissue specificity:Endothelial tissues and brain.,

**Nanjing BYabscience technology Co.,Ltd**



## Background

This gene encodes a classical cadherin of the cadherin superfamily. The encoded preprotein is proteolytically processed to generate the mature glycoprotein. This calcium-dependent cell-cell adhesion molecule is comprised of five extracellular cadherin repeats, a transmembrane region and a highly conserved cytoplasmic tail. Functioning as a classical cadherin by imparting to cells the ability to adhere in a homophilic manner, this protein plays a role in endothelial adherens junction assembly and maintenance. This gene is located in a gene cluster in a region on the long arm of chromosome 16 that is involved in loss of heterozygosity events in breast and prostate cancer. [provided by RefSeq, Nov 2015],

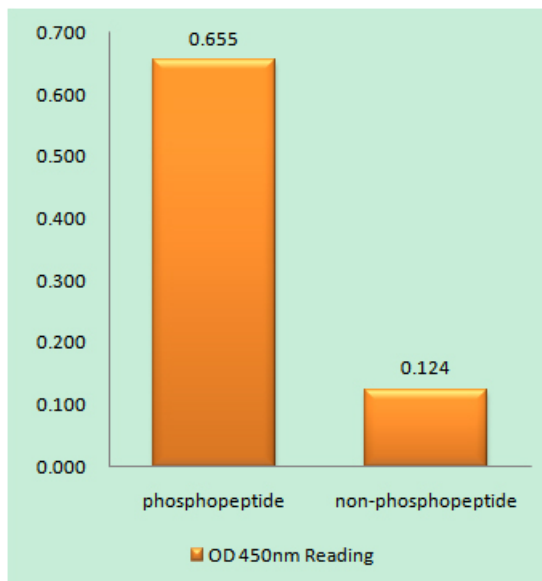
## matters needing attention

Avoid repeated freezing and thawing!

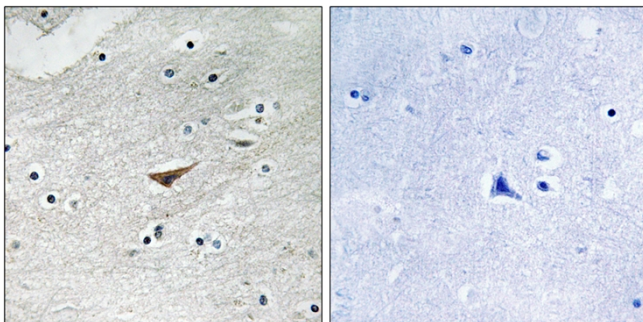
## Usage suggestions

This product can be used in immunological reaction related experiments. For more information, please consult technical personnel.

## Products Images

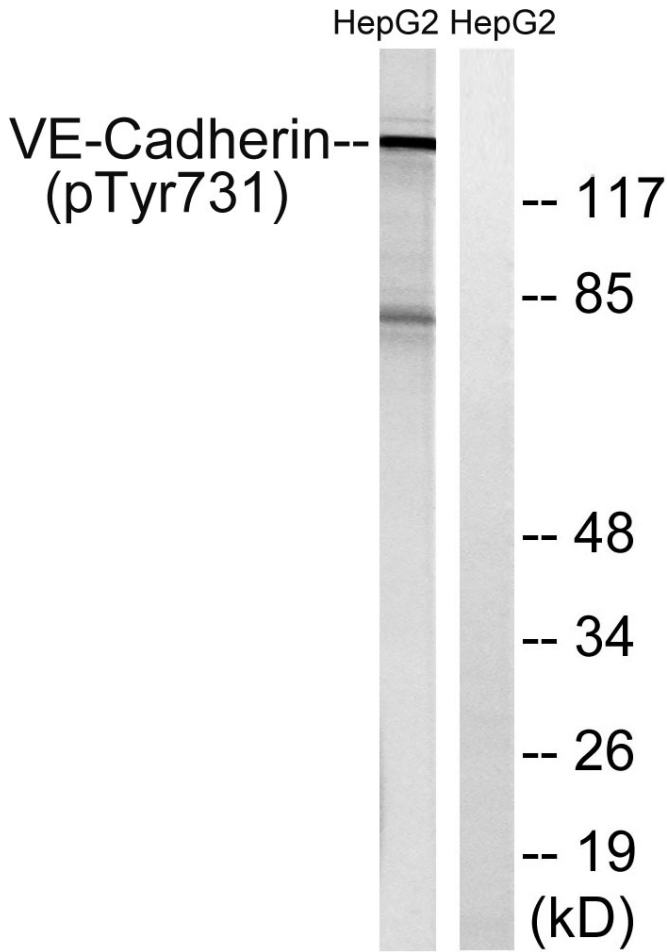


Enzyme-Linked Immunosorbent Assay (Phospho-ELISA) for Immunogen Phosphopeptide (Phospho-left) and Non-Phosphopeptide (Phospho-right), using VE-Cadherin (Phospho-Tyr731) Antibody



Immunohistochemistry analysis of paraffin-embedded human brain, using VE-Cadherin (Phospho-Tyr731) Antibody. The picture on the right is blocked with the phospho peptide.

**Nanjing BYabscience technology Co.,Ltd**



Western blot analysis of lysates from HepG2 cells treated with Na<sub>3</sub>VO<sub>4</sub> 0.3mM 40', using VE-Cadherin (Phospho-Tyr731) Antibody. The lane on the right is blocked with the phospho peptide.