



Integrin α 5 Monoclonal Antibody

Catalog No	BYab-16836
Isotype	IgG
Reactivity	Human
Applications	WB;IHC;IF;FCM;ELISA
Gene Name	ITGA5
Protein Name	Integrin alpha-5
Immunogen	Purified recombinant fragment of human Integrin α 5 expressed in E. Coli.
Specificity	Integrin α 5 Monoclonal Antibody detects endogenous levels of Integrin α 5 protein.
Formulation	Ascitic fluid containing 0.03% sodium azide,0.5% BSA, 50%glycerol.
Source	Monoclonal, Mouse
Purification	Affinity purification
Dilution	WB: 1/500 - 1/2000. IHC: 1/200 - 1/1000. Flow cytometry: 1/200 - 1/400. ELISA: 1/10000.. IF 1:50-200
Concentration	1 mg/ml
Purity	\geq 90%
Storage Stability	-20°C/1 year
Synonyms	ITGA5; FNRA; Integrin alpha-5; CD49 antigen-like family member E; Fibronectin receptor subunit alpha; Integrin alpha-F; VLA-5; CD antigen CD49e
Observed Band	
Cell Pathway	Membrane; Single-pass type I membrane protein. Cell junction, focal adhesion . Cell surface .
Tissue Specificity	Liver,Placenta,
Function	function:Integrin alpha-5/beta-1 is a receptor for fibronectin and fibrinogen. It recognizes the sequence R-G-D in its ligands. In case of HIV-1 infection, the interaction with extracellular viral Tat protein seems to enhance angiogenesis in Kaposi's sarcoma lesions.,similarity:Belongs to the integrin alpha chain family.,similarity:Contains 7 FG-GAP repeats.,subunit:Heterodimer of an alpha and a beta subunit. The alpha subunit is composed of an heavy and a light chain linked by a disulfide bond. Alpha-5 associates with beta-1. Interacts with HPS5 and NISCH. Interacts with HIV-1 Tat. Interacts with RAB21.,
Background	integrin subunit alpha 5(ITGA5) Homo sapiens The product of this gene belongs to the integrin alpha chain family. Integrins are heterodimeric integral membrane proteins composed of an alpha subunit and a beta subunit that

Nanjing BYabscience technology Co.,Ltd



function in cell surface adhesion and signaling. The encoded preproprotein is proteolytically processed to generate light and heavy chains that comprise the alpha 5 subunit. This subunit associates with the beta 1 subunit to form a fibronectin receptor. This integrin may promote tumor invasion, and higher expression of this gene may be correlated with shorter survival time in lung cancer patients. Note that the integrin alpha 5 and integrin alpha V subunits are encoded by distinct genes. [provided by RefSeq, Oct 2015],

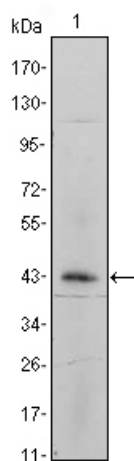
matters needing attention

Avoid repeated freezing and thawing!

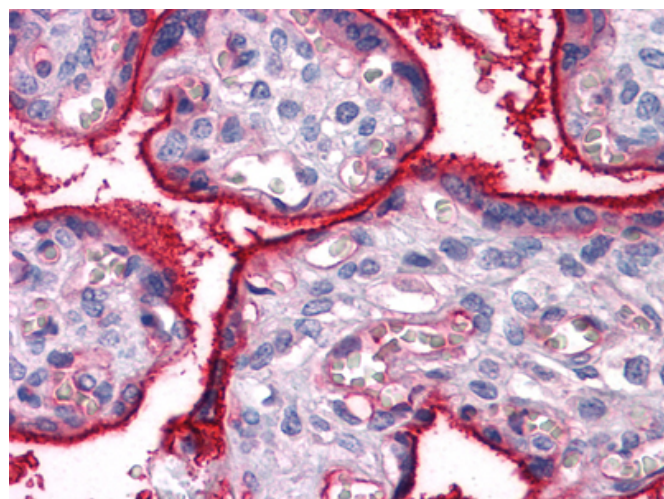
Usage suggestions

This product can be used in immunological reaction related experiments. For more information, please consult technical personnel.

Products Images

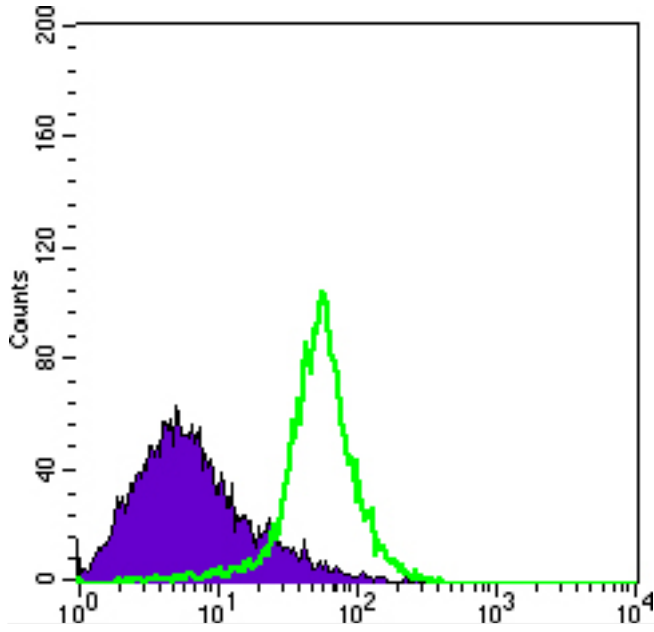


Western Blot analysis using Integrin α 5 Monoclonal Antibody against ITGA5-hlgGfc transfected HEK293 cell lysate.



Immunohistochemistry analysis of paraffin-embedded human Placenta tissues with AEC staining using Integrin α 5 Monoclonal Antibody.

Nanjing BYabscience technology Co.,Ltd



Flow cytometric analysis of Hela cells using Integrin $\alpha 5$ Monoclonal Antibody (green) and negative control (purple).