



Fibulin-2 Monoclonal Antibody

Catalog No	BYab-16834
Isotype	IgG
Reactivity	Human
Applications	WB;ELISA
Gene Name	FBLN2
Protein Name	Fibulin-2
Immunogen	Purified recombinant fragment of Fibulin-2 (aa180-440) expressed in E. Coli.
Specificity	Fibulin-2 Monoclonal Antibody detects endogenous levels of Fibulin-2 protein.
Formulation	Ascitic fluid containing 0.03% sodium azide,0.5% BSA, 50%glycerol.
Source	Monoclonal, Mouse
Purification	Affinity purification
Dilution	Western Blot: 1/500 - 1/2000. ELISA: 1/10000. Not yet tested in other applications.
Concentration	1 mg/ml
Purity	≥90%
Storage Stability	-20°C/1 year
Synonyms	FBLN2; Fibulin-2; FIBL-2
Observed Band	
Cell Pathway	Secreted, extracellular space, extracellular matrix.
Tissue Specificity	Component of both basement membranes and other connective tissues. Expressed in heart, placenta and ovary.
Function	developmental stage:Widely expressed during embryonic development. Primarily detected within the neuropithelium, spinal ganglia and peripheral nerves.,function:Its binding to fibronectin and some other ligands is calcium dependent.,similarity:Belongs to the fibulin family.,similarity:Contains 11 EGF-like domains.,similarity:Contains 3 anaphylatoxin-like domains.,subunit:Homotrimer; disulfide-linked. Interacts with LAMA2.,tissue specificity:Component of both basement membranes and other connective tissues. Expressed in heart, placenta and ovary.,
Background	This gene encodes an extracellular matrix protein, which belongs to the fibulin family. This protein binds various extracellular ligands and calcium. It may play a role during organ development, in particular, during the differentiation of heart, skeletal and neuronal structures. Alternatively spliced transcript variants encoding

Nanjing BYabscience technology Co.,Ltd



different isoforms have been identified. [provided by RefSeq, Jul 2008],

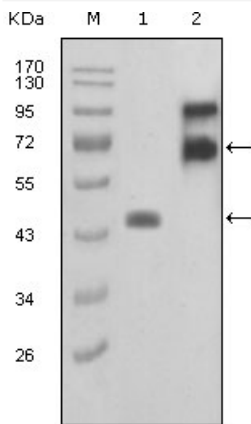
matters needing attention

Avoid repeated freezing and thawing!

Usage suggestions

This product can be used in immunological reaction related experiments. For more information, please consult technical personnel.

Products Images



Western Blot analysis using Fibulin-2 Monoclonal Antibody against truncated FBLN2-Trx recombinant protein (1) and truncated FBLN2 (aa28-444)-hIgGfc transfected COS7 cell lysate(2).