



ITGA5 (heavy chain, Cleaved-Arg894) rabbit pAb

Catalog No	BYab-16815
Isotype	IgG
Reactivity	Human;Mouse
Applications	WB;ELISA;IHC
Gene Name	ITGA5 FNRA
Protein Name	ITGA5 (heavy chain, Cleaved-Arg894)
Immunogen	Synthesized peptide derived from human ITGA5 (heavy chain, Cleaved-Arg894)
Specificity	This antibody detects endogenous levels of Human,Mouse ITGA5 (heavy chain, Cleaved-Arg894, protein was cleaved amino acid sequence between 894-895)
Formulation	Liquid in PBS containing 50% glycerol, 0.5% BSA and 0.02% sodium azide.
Source	Polyclonal, Rabbit,IgG
Purification	The antibody was affinity-purified from rabbit serum by affinity-chromatography using specific immunogen.
Dilution	WB 1:500-2000;IHC-p 1:50-300; ELISA 2000-20000
Concentration	1 mg/ml
Purity	≥90%
Storage Stability	-20°C/1 year
Synonyms	Integrin alpha-5 (CD49 antigen-like family member E;Fibronectin receptor subunit alpha;Integrin alpha-F;VLA-5;CD antigen CD49e) [Cleaved into: Integrin alpha-5 heavy chain; Integrin alpha-5 light chain]
Observed Band	94 110kD
Cell Pathway	Membrane; Single-pass type I membrane protein. Cell junction, focal adhesion . Cell surface .
Tissue Specificity	
Function	cell motion, cell-substrate junction assembly, cell adhesion, heterophilic cell adhesion, leukocyte adhesion, cell surface receptor linked signal transduction, integrin-mediated signaling pathway, behavior, learning or memory, memory,response to wounding, cell-cell adhesion, cell migration, biological adhesion, cell adhesion mediated by integrin, cell-cell adhesion mediated by integrin, cell junction assembly, cell junction organization, wound healing, spreading of epidermal cells, wound healing, cell motility, neurological system process, cognition, localization of cell,

Nanjing BYabscience technology Co.,Ltd



Background

function: Integrin alpha-5/beta-1 is a receptor for fibronectin and fibrinogen. It recognizes the sequence R-G-D in its ligands. In case of HIV-1 infection, the interaction with extracellular viral Tat protein seems to enhance angiogenesis in Kaposi's sarcoma lesions.,similarity: Belongs to the integrin alpha chain family.,similarity: Contains 7 FG-GAP repeats.,subunit: Heterodimer of an alpha and a beta subunit. The alpha subunit is composed of an heavy and a light chain linked by a disulfide bond. Alpha-5 associates with beta-1. Interacts with HPS5 and NISCH. Interacts with HIV-1 Tat. Interacts with RAB21.,

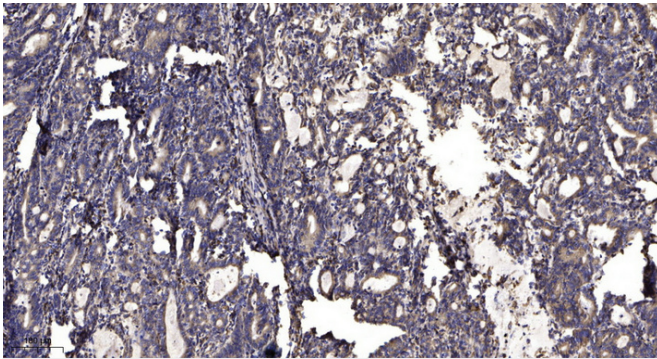
matters needing attention

Avoid repeated freezing and thawing!

Usage suggestions

This product can be used in immunological reaction related experiments. For more information, please consult technical personnel.

Products Images



Immunohistochemical analysis of paraffin-embedded human Gastric adenocarcinoma. 1, Antibody was diluted at 1:200(4° overnight). 2, Tris-EDTA, pH9.0 was used for antigen retrieval. 3, Secondary antibody was diluted at 1:200(room temperature, 45min).