



# ITGA3 (heavy chain, Cleaved-Phe33) rabbit pAb

<b>Catalog No</b>	BYab-16814
<b>Isotype</b>	IgG
<b>Reactivity</b>	Human;Mouse;Rat
<b>Applications</b>	WB;IF;ELISA;IHC
<b>Gene Name</b>	ITGA3 MSK18
<b>Protein Name</b>	ITGA3 (heavy chain, Cleaved-Phe33)
<b>Immunogen</b>	Synthesized peptide derived from human ITGA3 (heavy chain, Cleaved-Phe33)
<b>Specificity</b>	This antibody detects endogenous levels of Human,Mouse,Rat ITGA3 (heavy chain, Cleaved-Phe33, protein was cleaved amino acid sequence between 32-33)
<b>Formulation</b>	Liquid in PBS containing 50% glycerol, 0.5% BSA and 0.02% sodium azide.
<b>Source</b>	Polyclonal, Rabbit,IgG
<b>Purification</b>	The antibody was affinity-purified from rabbit serum by affinity-chromatography using specific immunogen.
<b>Dilution</b>	WB 1:500-2000; IF/ICC 1:50-200;ELISA 1:2000-20000;IHC-p 1:50-200
<b>Concentration</b>	1 mg/ml
<b>Purity</b>	≥90%
<b>Storage Stability</b>	-20°C/1 year
<b>Synonyms</b>	Integrin alpha-3 (CD49 antigen-like family member C;FRP-2;Galactoprotein B3;GAPB3;VLA-3 subunit alpha;CD antigen CD49c) [Cleaved into: Integrin alpha-3 heavy chain; Integrin alpha-3 light chain]
<b>Observed Band</b>	93 115kD
<b>Cell Pathway</b>	Cell membrane ; Single-pass type I membrane protein . Cell membrane ; Lipid-anchor . Cell projection, invadopodium membrane ; Single-pass type I membrane protein . Cell projection, filopodium membrane ; Single-pass type I membrane protein . Enriched preferentially at invadopodia, cell membrane protrusions that correspond to sites of cell invasion, in a collagen-dependent manner. .
<b>Tissue Specificity</b>	Isoform 1 is widely expressed. Isoform 2 is expressed in brain and heart. In brain, both isoforms are exclusively expressed on vascular smooth muscle cells, whereas in heart isoform 1 is strongly expressed on vascular smooth muscle cells, isoform 2 is detected only on endothelial vein cells.
<b>Function</b>	function:Integrin alpha-3/beta-1 is a receptor for fibronectin, laminin, collagen, epiligrin, thrombospondin and CSPG4. Alpha-3/beta-1 may mediate with LGALS3

Nanjing BYabscience technology Co.,Ltd



the stimulation by CSPG4 of endothelial cells migration.,PTM:Isoform alpha-3A, but not isoform alpha-3B, is phosphorylated on serine residues. Phosphorylation increases after phorbol 12-myristate 13-acetate stimulation. Isoform alpha-3A is phosphorylated on Tyr-1051.,similarity:Belongs to the integrin alpha chain family.,similarity:Contains 7 FG-GAP repeats.,subunit:Heterodimer of an alpha and a beta subunit. The alpha subunit is composed of an heavy and a light chain linked by a disulfide bond. Alpha-3 associates with beta-1. Interacts with HPS5.,tissue specificity:Isoform alpha-3A is widely expressed. Isoform alpha-3B is expressed in brain and heart. In brain, both isoforms are exclusively expressed on vascular smooth muscle cell

**Background**

integrin subunit alpha 3(ITGA3) Homo sapiens The gene encodes a member of the integrin alpha chain family of proteins. Integrins are heterodimeric integral membrane proteins composed of an alpha chain and a beta chain that function as cell surface adhesion molecules. The encoded preprotein is proteolytically processed to generate light and heavy chains that comprise the alpha 3 subunit. This subunit joins with a beta 1 subunit to form an integrin that interacts with extracellular matrix proteins including members of the laminin family. Expression of this gene may be correlated with breast cancer metastasis. [provided by RefSeq, Oct 2015],

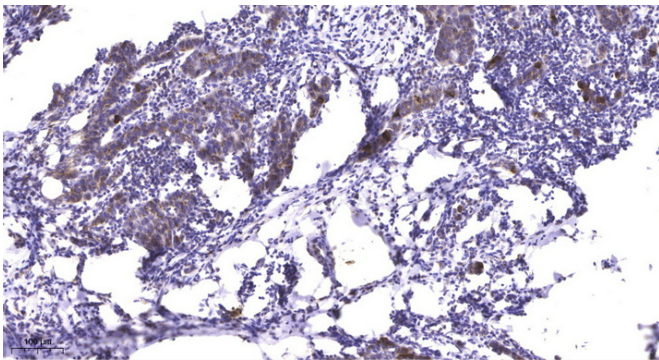
**matters needing attention**

Avoid repeated freezing and thawing!

**Usage suggestions**

This product can be used in immunological reaction related experiments. For more information, please consult technical personnel.

**Products Images**



Immunohistochemical analysis of paraffin-embedded human Breast cancer. 1, Antibody was diluted at 1:200(4° overnight). 2, Tris-EDTA,pH9.0 was used for antigen retrieval. 3,Secondary antibody was diluted at 1:200(room temperature, 45min).