



# Cleaved-Integrin $\alpha$ 6 LC (E942) Polyclonal Antibody

<b>Catalog No</b>	BYab-16806
<b>Isotype</b>	IgG
<b>Reactivity</b>	Human;Rat;Mouse;
<b>Applications</b>	WB;ELISA
<b>Gene Name</b>	ITGA6
<b>Protein Name</b>	Integrin alpha-6
<b>Immunogen</b>	The antiserum was produced against synthesized peptide derived from human ITGA6. AA range:923-972
<b>Specificity</b>	Cleaved-Integrin $\alpha$ 6 LC (E942) Polyclonal Antibody detects endogenous levels of fragment of activated Integrin $\alpha$ 6 LC protein resulting from cleavage adjacent to E942.
<b>Formulation</b>	Liquid in PBS containing 50% glycerol, 0.5% BSA and 0.02% sodium azide.
<b>Source</b>	Polyclonal, Rabbit,IgG
<b>Purification</b>	The antibody was affinity-purified from rabbit antiserum by affinity-chromatography using epitope-specific immunogen.
<b>Dilution</b>	Western Blot: 1/500 - 1/2000. ELISA: 1/10000. Not yet tested in other applications.
<b>Concentration</b>	1 mg/ml
<b>Purity</b>	$\geq 90\%$
<b>Storage Stability</b>	-20°C/1 year
<b>Synonyms</b>	ITGA6; Integrin alpha-6; CD49 antigen-like family member F; VLA-6; CD antigen CD49f
<b>Observed Band</b>	28kD
<b>Cell Pathway</b>	Cell membrane ; Single-pass type I membrane protein . Cell membrane ; Lipid-anchor .
<b>Tissue Specificity</b>	Integrin alpha-6/beta-4 is predominantly expressed by epithelia. Isoforms containing segment X1 are ubiquitously expressed. Isoforms containing segment X1X2 are expressed in heart, kidney, placenta, colon, duodenum, myoblasts and myotubes, and in a limited number of cell lines; they are always coexpressed with the ubiquitous isoform containing segment X1. In some tissues (e.g. Salivary gland), isoforms containing cytoplasmic segment A and isoforms containing segment B are detected while in others, only isoforms containing one cytoplasmic segment are found (segment A in epidermis and segment B in kidney). Processed integrin alpha-6: Expressed at low levels in normal prostate tissue with elevated levels in prostate cancer tissue (at protein level) (PubMed:15023541).

Nanjing BYabscience technology Co.,Ltd

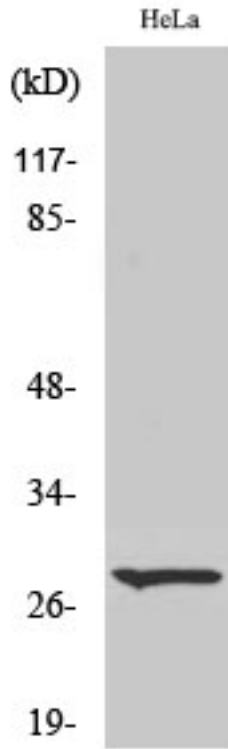


<b>Function</b>	alternative products:Additional isoforms seem to exist. There is a combination of at least four alternatively spliced domains, two extracellular (X1 and X2) and two cytoplasmic (A and B). So far detected are isoform Alpha-6X1A, isoform Alpha-6X1B and isoform Alpha-6X1X2A (minor). Experimental confirmation may be lacking for some isoforms,disease:Defects in ITGA6 are a cause of epidermolysis bullosa with pyloric atresia (EB-PA) [MIM:226730]; also known as aplasia cutis congenita with gastrointestinal atresia. EB-PA is an autosomal recessive disease characterized by mucocutaneous fragility and gastrointestinal atresia, which most commonly affects the pylorus.,function:Integrin alpha-6/beta-1 is a receptor for laminin on platelets. Integrin alpha-6/beta-4 is a receptor for laminin in epithelial cells and it plays a critical structural role in the hemidesmosome.,PTM:Isoforms containing segme
<b>Background</b>	integrin subunit alpha 6(ITGA6) Homo sapiens The gene encodes a member of the integrin alpha chain family of proteins. Integrins are heterodimeric integral membrane proteins composed of an alpha chain and a beta chain that function in cell surface adhesion and signaling. The encoded preproprotein is proteolytically processed to generate light and heavy chains that comprise the alpha 6 subunit. This subunit may associate with a beta 1 or beta 4 subunit to form an integrin that interacts with extracellular matrix proteins including members of the laminin family. The alpha 6 beta 4 integrin may promote tumorigenesis, while the alpha 6 beta 1 integrin may negatively regulate erbB2/HER2 signaling. Alternative splicing results in multiple transcript variants. [provided by RefSeq, Oct 2015],
<b>matters needing attention</b>	Avoid repeated freezing and thawing!
<b>Usage suggestions</b>	This product can be used in immunological reaction related experiments. For more information, please consult technical personnel.

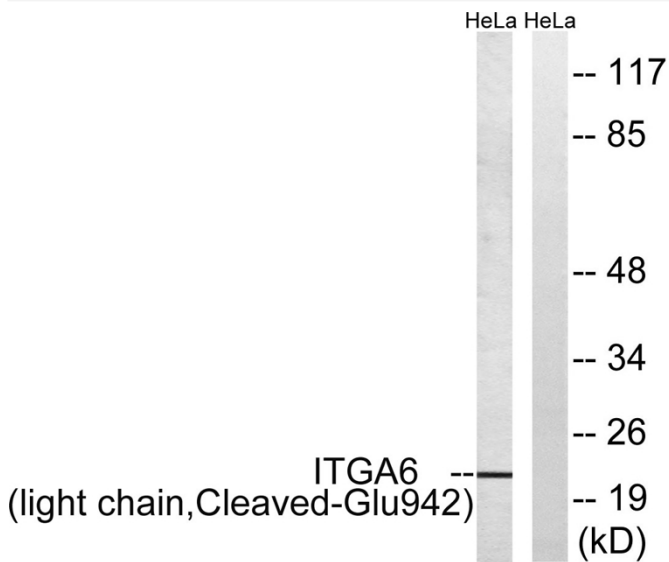
Nanjing BYabscience technology Co.,Ltd



## Products Images



Western Blot analysis of various cells using Cleaved-Integrin  $\alpha 6$  LC (E942) Polyclonal Antibody



Western blot analysis of lysates from HeLa cells, treated with etoposide 25uM 24h, using ITGA6 (light chain, Cleaved-Glu942) Antibody. The lane on the right is blocked with the synthesized peptide.

Nanjing BYabscience technology Co.,Ltd