



SCP-2 Polyclonal Antibody

Catalog No	BYab-16787
Isotype	IgG
Reactivity	Human;Rat;Mouse;
Applications	WB;ELISA;IHC
Gene Name	SYCP2
Protein Name	Synaptonemal complex protein 2
Immunogen	Synthesized peptide derived from the Internal region of human SCP-2.
Specificity	SCP-2 Polyclonal Antibody detects endogenous levels of SCP-2 protein.
Formulation	Liquid in PBS containing 50% glycerol, 0.5% BSA and 0.02% sodium azide.
Source	Polyclonal, Rabbit,IgG
Purification	The antibody was affinity-purified from rabbit antiserum by affinity-chromatography using epitope-specific immunogen.
Dilution	WB 1:500-2000;IHC-p 1:50-300; ELISA 2000-20000
Concentration	1 mg/ml
Purity	≥90%
Storage Stability	-20°C/1 year
Synonyms	SYCP2; SCP2; Synaptonemal complex protein 2; SCP-2; Synaptonemal complex lateral element protein; hsSCP2
Observed Band	175kD
Cell Pathway	Nucleus . Chromosome . In axial/lateral elements of the tripartite segments of synaptonemal complexes. .
Tissue Specificity	Kidney,Testis,
Function	function:Major component of the axial/lateral elements of synaptonemal complexes (SCS) during meiotic prophase. May be involved in the organization of chromatin by temporarily binding to DNA scaffold attachment regions. Requires SYCP3, but not SYCP1, in order to be incorporated into the axial/lateral elements.,similarity:Belongs to the SYCP2 family.,subcellular location:In axial/lateral elements of the tripartite segments of synaptonemal complexes.,subunit:Heterodimer with SYCP3. Interacts with SYCP3, SMC1A and SMC3.,
Background	The synaptonemal complex is a proteinaceous structure that links homologous chromosomes during the prophase of meiosis. The protein encoded by this gene

Nanjing BYabscience technology Co.,Ltd



is a major component of the synaptonemal complex and may bind DNA at scaffold attachment regions. The encoded protein requires synaptonemal complex protein 3, but not 1, for inclusion in the synaptonemal complex. [provided by RefSeq, Jul 2008],

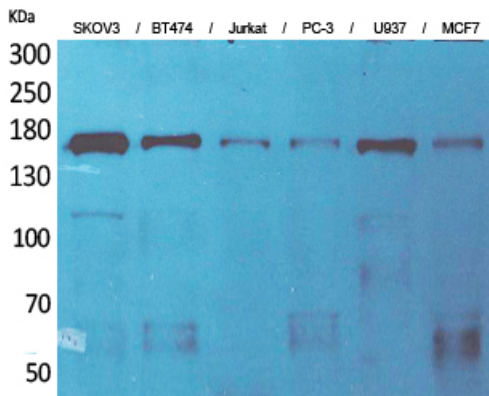
matters needing attention

Avoid repeated freezing and thawing!

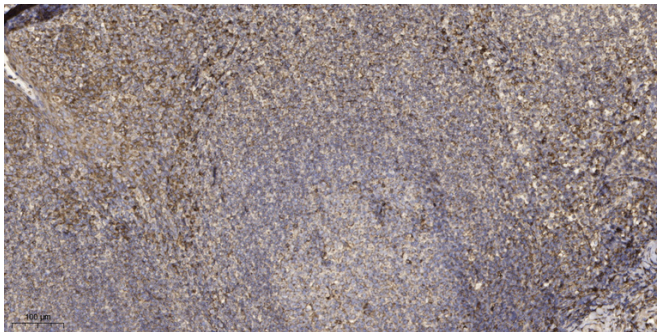
Usage suggestions

This product can be used in immunological reaction related experiments. For more information, please consult technical personnel.

Products Images



Western Blot analysis of SKOV3, BT474, Jurkat, PC-3, U937, MCF7 cells using SCP-2 Polyclonal Antibody. Secondary antibody(catalog#:RS0002) was diluted at 1:20000 cells nucleus extracted by Minute TM Cytoplasmic and Nuclear Fractionation kit (SC-003, Inventbiotech, MN, USA).



Immunohistochemical analysis of paraffin-embedded human tonsil. 1, Antibody was diluted at 1:200(4° overnight). 2, Tris-EDTA, pH9.0 was used for antigen retrieval. 3, Secondary antibody was diluted at 1:200(room temperature, 45min).