



MPP10 Polyclonal Antibody

Catalog No	BYab-16785
Isotype	IgG
Reactivity	Human;Rat;Mouse;
Applications	WB;ELISA;IHC
Gene Name	MPHOSPH10
Protein Name	U3 small nucleolar ribonucleoprotein protein MPP10
Immunogen	Synthesized peptide derived from MPP10 . at AA range: 60-140
Specificity	MPP10 Polyclonal Antibody detects endogenous levels of MPP10 protein.
Formulation	Liquid in PBS containing 50% glycerol, 0.5% BSA and 0.02% sodium azide.
Source	Polyclonal, Rabbit,IgG
Purification	The antibody was affinity-purified from rabbit antiserum by affinity-chromatography using epitope-specific immunogen.
Dilution	WB 1:500-2000;IHC-p 1:50-300; ELISA 2000-20000
Concentration	1 mg/ml
Purity	≥90%
Storage Stability	-20°C/1 year
Synonyms	MPHOSPH10; MPP10; U3 small nucleolar ribonucleoprotein protein MPP10; M phase phosphoprotein 10
Observed Band	78kD
Cell Pathway	Nucleus, nucleolus . Chromosome . Fibrillar region of the nucleolus (PubMed:9450966). After dissolution of the nucleolus in early M phase becomes associated with chromosomes through metaphase and anaphase (PubMed:9450966). In telophase localized to small cellular prenucleolar bodies that not always contain fibrillarin (PubMed:9450966). The reassociation with nucleolus is preceded by the arrival of fibrillarin (PubMed:9450966). .
Tissue Specificity	Blood,Brain,Epithelium,Mammary cancer,Placenta,Prostate,
Function	function:Component of the 60-80S U3 small nucleolar ribonucleoprotein (U3 snoRNP). Required for the early cleavages during pre-18S ribosomal RNA processing.,PTM:Phosphorylated in M (mitotic) phase.,similarity:Belongs to the MPP10 family.,subcellular location:Fibrillar region of the nucleolus. After dissolution of the nucleolus in early M phase becomes associated with chromosomes through metaphase and anaphase. In telophase localized to small cellular prenucleolar bodies that not always contain fibrillarin. The reassociation

Nanjing BYabscience technology Co.,Ltd



with nucleolus is preceded by the arrival of fibrillar in., subunit: Component of a heterotrimeric complex containing IMP3, IMP4 and MPHOSPH10. Interacts with IMP3 and IMP4.,

Background

This gene encodes a protein that is phosphorylated during mitosis. The protein localizes to the nucleolus during interphase and to the chromosomes during M phase. The protein associates with the U3 small nucleolar ribonucleoprotein 60-80S complexes and may be involved in pre-rRNA processing. [provided by RefSeq, Dec 2010],

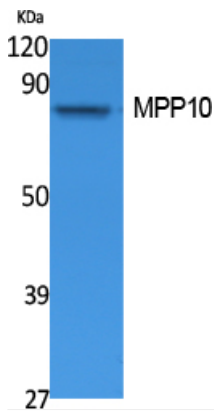
matters needing attention

Avoid repeated freezing and thawing!

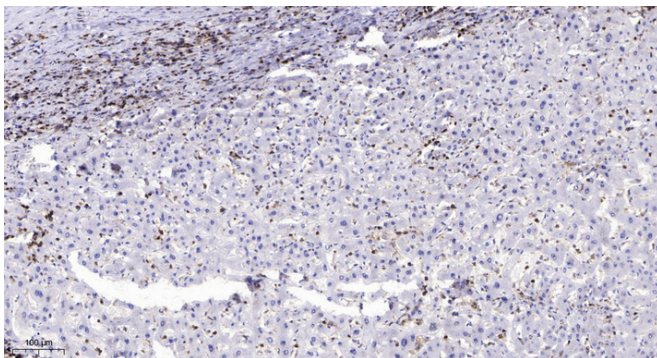
Usage suggestions

This product can be used in immunological reaction related experiments. For more information, please consult technical personnel.

Products Images



Western Blot analysis of extracts from Jurkat cells, using MPP10 Polyclonal Antibody. Secondary antibody(catalog#:RS0002) was diluted at 1:20000 cells nucleus extracted by Minute TM Cytoplasmic and Nuclear Fractionation kit (SC-003, Invent biotech, MN, USA).



Immunohistochemical analysis of paraffin-embedded human liver cancer. 1, Antibody was diluted at 1:200(4° overnight). 2, Tris-EDTA, pH9.0 was used for antigen retrieval. 3, Secondary antibody was diluted at 1:200(room temperature, 45min).

Nanjing BYabscience technology Co.,Ltd