



# Rec8 Polyclonal Antibody

<b>Catalog No</b>	BYab-16771
<b>Isotype</b>	IgG
<b>Reactivity</b>	Human;Rat;Mouse;
<b>Applications</b>	WB;ELISA;IHC
<b>Gene Name</b>	REC8
<b>Protein Name</b>	Meiotic recombination protein REC8 homolog
<b>Immunogen</b>	The antiserum was produced against synthesized peptide derived from human REC8. AA range:154-203
<b>Specificity</b>	Rec8 Polyclonal Antibody detects endogenous levels of Rec8 protein.
<b>Formulation</b>	Liquid in PBS containing 50% glycerol, 0.5% BSA and 0.02% sodium azide.
<b>Source</b>	Polyclonal, Rabbit,IgG
<b>Purification</b>	The antibody was affinity-purified from rabbit antiserum by affinity-chromatography using epitope-specific immunogen.
<b>Dilution</b>	WB 1:500-2000;IHC-p 1:50-300; ELISA 2000-20000
<b>Concentration</b>	1 mg/ml
<b>Purity</b>	≥90%
<b>Storage Stability</b>	-20°C/1 year
<b>Synonyms</b>	REC8; REC8L1; Meiotic recombination protein REC8 homolog; Cohesin Rec8p
<b>Observed Band</b>	62kD
<b>Cell Pathway</b>	Nucleus . Chromosome . Chromosome, centromere . In meiotic chromosomes, localized along axial elements in prophase from the leptotene to diplotene stages. At later prophase stages, diakinesis and metaphase I, localized along interstitial axes of chromosomes including both centromere and arm regions. No longer detected in arm regions in anaphase I but persists on centromere regions until metaphase II. Localized to centromeres and spindle poles in endopolyploid tumor cells. .
<b>Tissue Specificity</b>	Expressed in testis and thymus. Expressed in the B-cell lines WI-L2-NS and Namalwa (at protein level).
<b>Function</b>	function:Required during meiosis for separation of sister chromatids and homologous chromosomes. Proteolytic cleavage of REC8 on chromosome arms by separin during anaphase I allows for homologous chromosome separation in meiosis I and cleavage of REC8 on centromeres during anaphase II allows for sister chromatid separation in meiosis II.,PTM:Phosphorylated.,similarity:Belongs to the rad21 family.,subcellular location:In meiotic chromosomes, localized along

**Nanjing BYabscience technology Co.,Ltd**



axial elements in prophase from the leptotene to diplotene stages. At later prophase stages, diakinesis and metaphase I, localized along interstitial axes of chromosomes including both centromere and arm regions. No longer detected in arm regions in anaphase I but persists on centromere regions until metaphase II.,subunit:Interacts in both phosphorylated and unphosphorylated forms with SMC3, SYCP3 and SMC1B but not with SMC1A. Also int

#### Background

This gene encodes a member of the kleisin family of SMC (structural maintenance of chromosome) protein partners. The protein localizes to the axial elements of chromosomes during meiosis in both oocytes and spermatocytes. In the mouse, the homologous protein is a key component of the meiotic cohesion complex, which regulates sister chromatid cohesion and recombination between homologous chromosomes. Multiple alternatively spliced variants, encoding the same protein, have been found for this gene. [provided by RefSeq, Jul 2008],

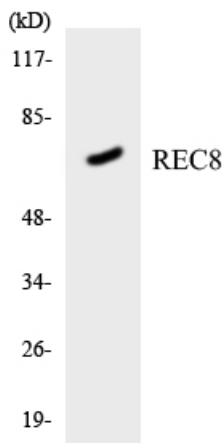
#### matters needing attention

Avoid repeated freezing and thawing!

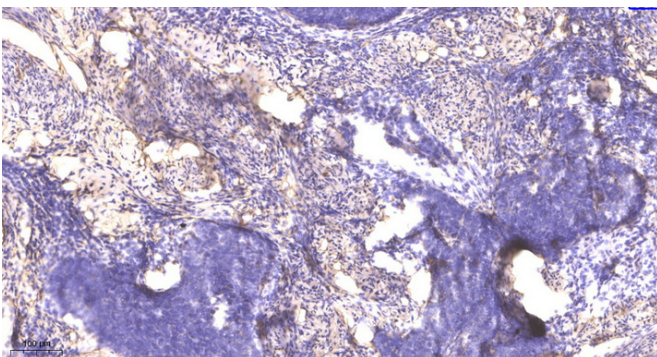
#### Usage suggestions

This product can be used in immunological reaction related experiments. For more information, please consult technical personnel.

## Products Images



Western blot analysis of the lysates from HT-29 cells using REC8 antibody.



Immunohistochemical analysis of paraffin-embedded human cervical carcinoma. 1, Antibody was diluted at 1:200(4° overnight). 2, Tris-EDTA,pH9.0 was used for antigen retrieval. 3,Secondary antibody was diluted at 1:200(room temperature, 45min).

Nanjing BYabscience technology Co.,Ltd