



NKIAMRE Polyclonal Antibody

Catalog No	BYab-16755
Isotype	IgG
Reactivity	Human;Rat;Mouse;
Applications	IHC;IF;WB;ELISA
Gene Name	CDKL3
Protein Name	Cyclin-dependent kinase-like 3
Immunogen	The antiserum was produced against synthesized peptide derived from human CDKL3. AA range:291-340
Specificity	NKIAMRE Polyclonal Antibody detects endogenous levels of NKIAMRE protein.
Formulation	Liquid in PBS containing 50% glycerol, 0.5% BSA and 0.02% sodium azide.
Source	Polyclonal, Rabbit,IgG
Purification	The antibody was affinity-purified from rabbit antiserum by affinity-chromatography using epitope-specific immunogen.
Dilution	WB 1:500-2000 IHC: 1/100 - 1/300. ELISA: 1/5000.. IF 1:50-200
Concentration	1 mg/ml
Purity	≥90%
Storage Stability	-20°C/1 year
Synonyms	CDKL3; NKIAMRE; Cyclin-dependent kinase-like 3; Serine/threonine-protein kinase NKIAMRE
Observed Band	67kD
Cell Pathway	Cytoplasm .
Tissue Specificity	Fetal heart,Testis,
Function	catalytic activity:ATP + a protein = ADP + a phosphoprotein.,domain:The [NKR]KIAxRE motif seems to be a cyclin-binding region.,similarity:Belongs to the protein kinase superfamily. CMGC Ser/Thr protein kinase family. CDC2/CDKX subfamily.,similarity:Contains 1 protein kinase domain.,
Background	The protein encoded by this gene is a member of cyclin-dependent protein kinase (CDK) family. CDK family members are highly similar to the gene products of <i>Saccharomyces cerevisiae cdc28</i> , and <i>Schizosaccharomyces pombe cdc2</i> , and are known to be important regulators of cell cycle progression. This gene was identified as a gene absent in leukemic patients with chromosome 5q deletion. This loss may be an important determinant of dysmyelopoiesis. Alternative

Nanjing BYabscience technology Co.,Ltd



splicing results in multiple transcript variants encoding different isoforms. [provided by RefSeq, Jul 2008],

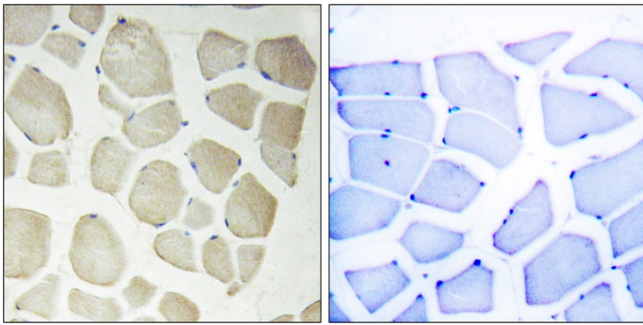
matters needing attention

Avoid repeated freezing and thawing!

Usage suggestions

This product can be used in immunological reaction related experiments. For more information, please consult technical personnel.

Products Images



Immunohistochemistry analysis of paraffin-embedded human skeletal muscle, using CDKL3 Antibody. The picture on the right is blocked with the synthesized peptide.