



# MPP1 Polyclonal Antibody

<b>Catalog No</b>	BYab-16751
<b>Isotype</b>	IgG
<b>Reactivity</b>	Human;Rat;Mouse;
<b>Applications</b>	IF;ELISA;IHC
<b>Gene Name</b>	KIF20B
<b>Protein Name</b>	Kinesin-like protein KIF20B
<b>Immunogen</b>	The antiserum was produced against synthesized peptide derived from human KIF20B. AA range:1771-1820
<b>Specificity</b>	MPP1 Polyclonal Antibody detects endogenous levels of MPP1 protein.
<b>Formulation</b>	Liquid in PBS containing 50% glycerol, 0.5% BSA and 0.02% sodium azide.
<b>Source</b>	Polyclonal, Rabbit,IgG
<b>Purification</b>	The antibody was affinity-purified from rabbit antiserum by affinity-chromatography using epitope-specific immunogen.
<b>Dilution</b>	IF/ICC 1:50-300; ELISA 1:2000-20000; IHC-p 1:50-200
<b>Concentration</b>	1 mg/ml
<b>Purity</b>	≥90%
<b>Storage Stability</b>	-20°C/1 year
<b>Synonyms</b>	KIF20B; KRMP1; MPHOSPH1; Kinesin-like protein KIF20B; Cancer/testis antigen 90; CT90; Kinesin-related motor interacting with PIN1; M-phase phosphoprotein 1; MPP1
<b>Observed Band</b>	210kD
<b>Cell Pathway</b>	Nucleus . Cytoplasm, cytoskeleton, microtubule organizing center, centrosome . Nucleus, nucleolus . Nucleus, nucleoplasm . Cytoplasm, cytoskeleton, spindle . Cytoplasm, cytoskeleton, spindle pole . Midbody . Cell projection, axon . Cell projection, growth cone . Localizes mainly in the nucleus during interphase although it is also detected in the cytoplasm without clear association with microtubules (PubMed:12740395). Localized to the central spindle during cytokinetic furrowing and with the midbody during abscission (PubMed:12740395, PubMed:17409436). A 2-3 fold expression increase is seen as cells progress from G1 to G2/M phase (PubMed:12740395). During prophase and metaphase it is found throughout the cytoplasm and at anaphase accumulates at the midplan of the cell and forms a distinct
<b>Tissue Specificity</b>	Brain, ovary, kidney and testis (at protein level) (PubMed:12740395). Overexpressed in bladder cancer cells (at protein level) (PubMed:17409436).

Nanjing BYabscience technology Co.,Ltd



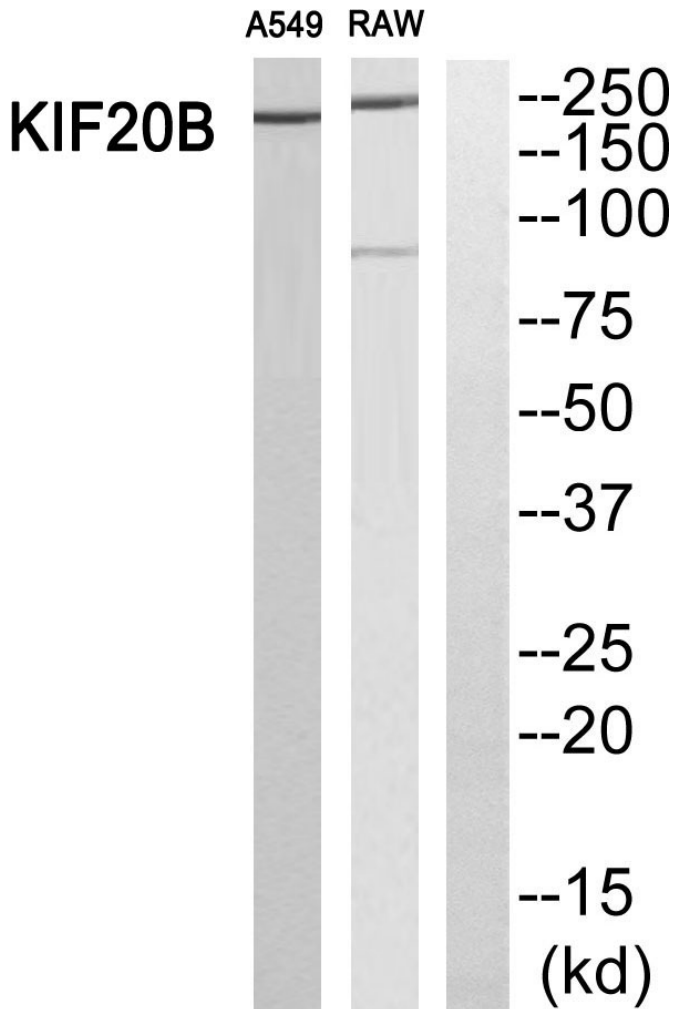
Expressed in testis. Overexpressed in bladder cancer cells (PubMed:17409436).

<b>Function</b>	M phase of mitotic cell cycle, mitotic cell cycle, M phase, nuclear division, microtubule-based process, microtubule-based movement, cell cycle, cell cycle arrest, mitosis, regulation of mitosis, regulation of mitotic cell cycle, regulation of cell cycle process, cell cycle process, cell cycle phase, regulation of organelle organization, organelle fission, cell division, regulation of cell cycle, regulation of nuclear division,
<b>Background</b>	KIF20B (Kinesin Family Member 20B) is a Protein Coding gene. Among its related pathways are Golgi-to-ER retrograde transport and Factors involved in megakaryocyte development and platelet production. GO annotations related to this gene include ATPase activity and microtubule motor activity. An important paralog of this gene is KIF23.
<b>matters needing attention</b>	Avoid repeated freezing and thawing!
<b>Usage suggestions</b>	This product can be used in immunological reaction related experiments. For more information, please consult technical personnel.

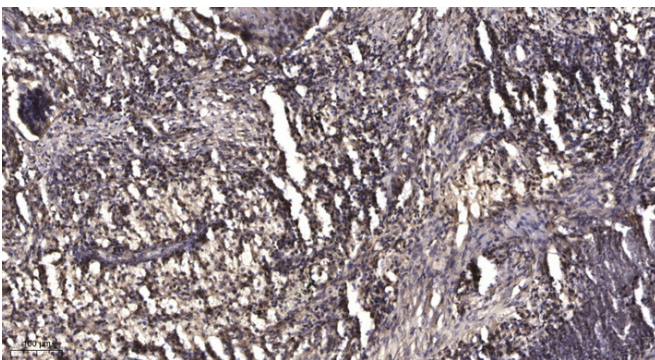
Nanjing BYabscience technology Co.,Ltd



## Products Images



Western blot analysis of KIF20B Antibody. The lane on the right is blocked with the KIF20B peptide.



Immunohistochemical analysis of paraffin-embedded human Squamous cell carcinoma of lung. 1, Antibody was diluted at 1:200(4° overnight). 2, Tris-EDTA,pH9.0 was used for antigen retrieval. 3,Secondary antibody was diluted at 1:200(room temperature, 45min).

Nanjing BYabscience technology Co.,Ltd