



MAD2L1BP Polyclonal Antibody

Catalog No	BYab-16748
Isotype	IgG
Reactivity	Human;Rat;Mouse;
Applications	WB;ELISA
Gene Name	MAD2L1BP
Protein Name	MAD2L1-binding protein
Immunogen	Synthesized peptide derived from MAD2L1BP . at AA range: 10-90
Specificity	MAD2L1BP Polyclonal Antibody detects endogenous levels of MAD2L1BP protein.
Formulation	Liquid in PBS containing 50% glycerol, 0.5% BSA and 0.02% sodium azide.
Source	Polyclonal, Rabbit,IgG
Purification	The antibody was affinity-purified from rabbit antiserum by affinity-chromatography using epitope-specific immunogen.
Dilution	Western Blot: 1/500 - 1/2000. ELISA: 1/10000. Not yet tested in other applications.
Concentration	1 mg/ml
Purity	≥90%
Storage Stability	-20°C/1 year
Synonyms	MAD2L1BP; CMT2; KIAA0110; MAD2L1-binding protein; Caught by MAD2 protein
Observed Band	31kD
Cell Pathway	Nucleus. Cytoplasm, cytoskeleton, spindle. During early mitosis, unevenly distributed throughout the nucleoplasm. From metaphase to anaphase, concentrated on the spindle.
Tissue Specificity	Bone marrow,Brain,Lung,
Function	developmental stage:During the cell cycle, levels increase and then remain constant until late mitosis after which they drop.,function:May function to silence the spindle checkpoint and allow mitosis to proceed through anaphase by binding MAD2L1 after it has become dissociated from the MAD2L1-CDC20 complex.,PTM:Phosphorylated upon DNA damage, probably by ATM or ATR.,similarity:Belongs to the MAD2L1BP family.,subcellular location:During early mitosis, unevenly distributed throughout the nucleoplasm. From metaphase to anaphase, concentrated on the spindle.,subunit:Interacts with MAD2L1.,

Nanjing BYabscience technology Co.,Ltd



Background

The protein encoded by this gene was identified as a binding protein of the MAD2 mitotic arrest deficient-like 1 (MAD2/MAD2L1). MAD2 is a key component of the spindle checkpoint that delays the onset of anaphase until all the kinetochores are attached to the spindle. This protein may interact with the spindle checkpoint and coordinate cell cycle events in late mitosis. Alternatively spliced transcript variants encoding distinct isoforms have been observed. [provided by RefSeq, Jul 2008],

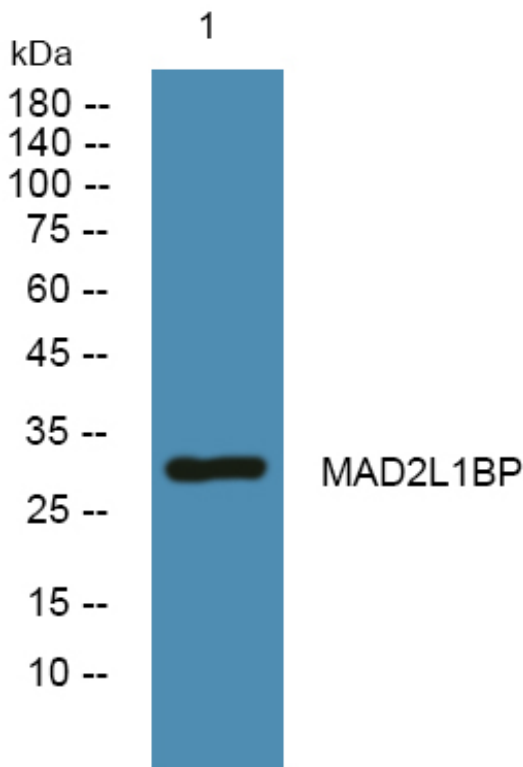
matters needing attention

Avoid repeated freezing and thawing!

Usage suggestions

This product can be used in immunological reaction related experiments. For more information, please consult technical personnel.

Products Images



Nanjing BYabscience technology Co.,Ltd